

STATES OF JERSEY



DRAFT POLICING OF PARKS (AMENDMENT No. 5) (JERSEY) REGULATIONS 201-

Lodged au Greffe on 20th March 2013
by the Minister for Transport and Technical Services

STATES GREFFE



Jersey

DRAFT POLICING OF PARKS (AMENDMENT No. 5) (JERSEY) REGULATIONS 201-

REPORT

To enable proper policing and management of the Les Quennevais Playing Fields, Grainville Playing Fields and Florence Boot Playing Fields (known as “FB Playing Fields”) it is necessary to formally designate these areas as ‘Parks’ by including them under Part 1 of the Schedule in the Policing of Parks (Jersey) Regulations 2005.

By being listed under Part 1 of the Schedule, it will be necessary for dog-owners to ensure that their dogs are on a lead and within the confines of established paths.

Financial and manpower implications

There are no financial or manpower implications for the States arising from the adoption of these draft Regulations.

Explanatory Note

Regulation 1 adds Florence Boot Playing Fields (known as “FB Playing Fields”), Grainville Playing Fields and Les Quennevais Playing Fields to the areas designated as parks under the Policing of Parks (Jersey) Regulations 2005 (the “2005 Regulations”). The plans of the areas are set out in the *Schedule*.

All 3 areas are designated as Part 1 parks, which means (by virtue of Article 5 of the 2005 Regulations) that a person may only take a dog into those parks so long as the dog is kept on a lead and is kept within the confines of established paths while it is in the park.

Regulation 2 provides for the title of the Regulations and for their coming into force 7 days after they are made.



Jersey

DRAFT POLICING OF PARKS (AMENDMENT No. 5) (JERSEY) REGULATIONS 201-

Arrangement

Regulation

1	Policing of Parks (Jersey) Regulations 2005 amended	7
2	Citation and commencement	7

SCHEDULE

8

SCHEDULE AMENDED

8



Jersey

DRAFT POLICING OF PARKS (AMENDMENT No. 5) (JERSEY) REGULATIONS 201-

Made [date to be inserted]
Coming into force [date to be inserted]

THE STATES, in pursuance of Order in Council of 26th December 1851¹ and Article 92 of the Road Traffic (Jersey) Law 1956², have made the following Regulations –

1 Policing of Parks (Jersey) Regulations 2005 amended

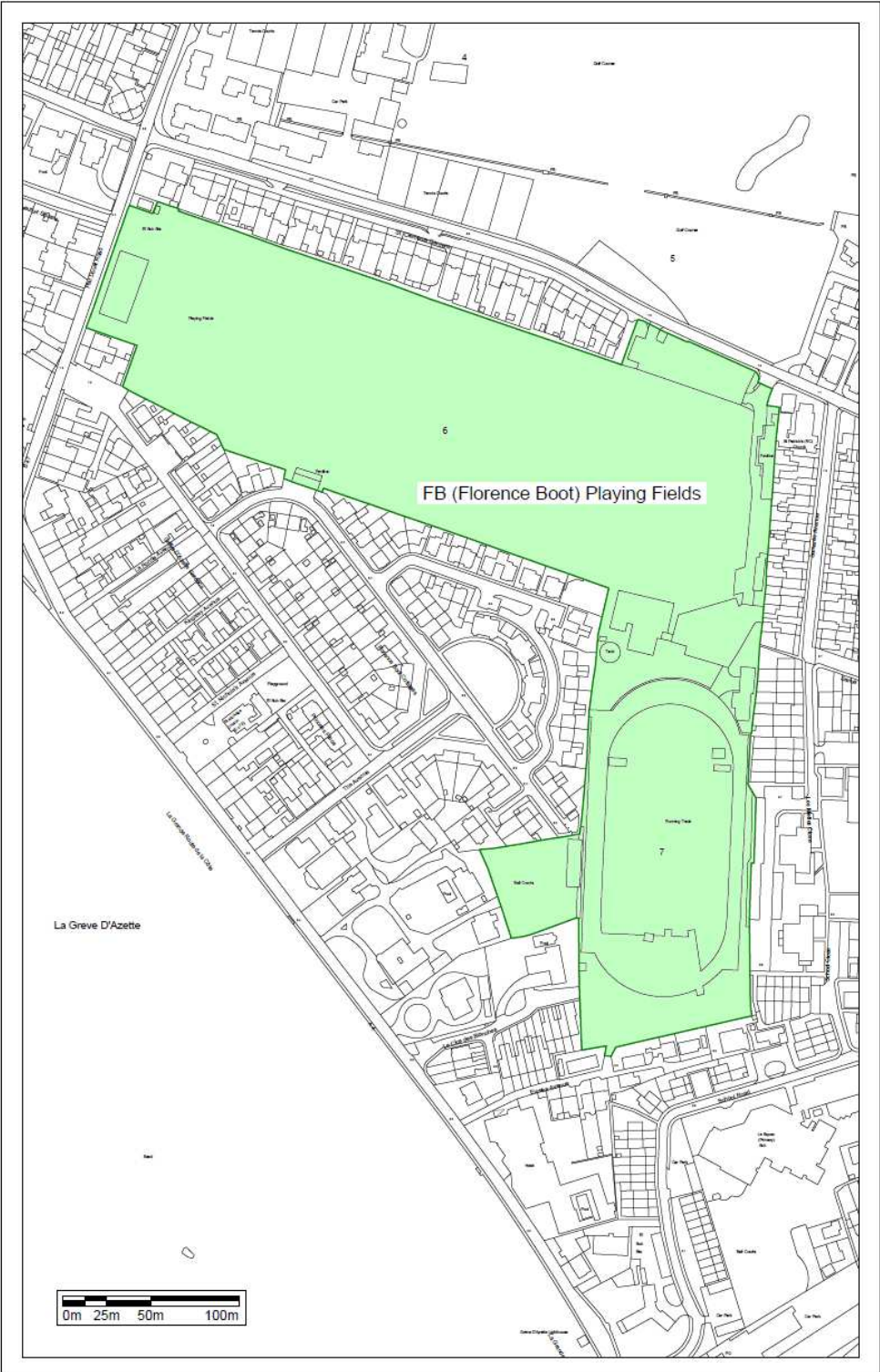
In Part 1 of the Schedule to the Policing of Parks (Jersey) Regulations 2005³, after the plan showing First Tower Park there shall be inserted the plans set out in the Schedule to these Regulations.

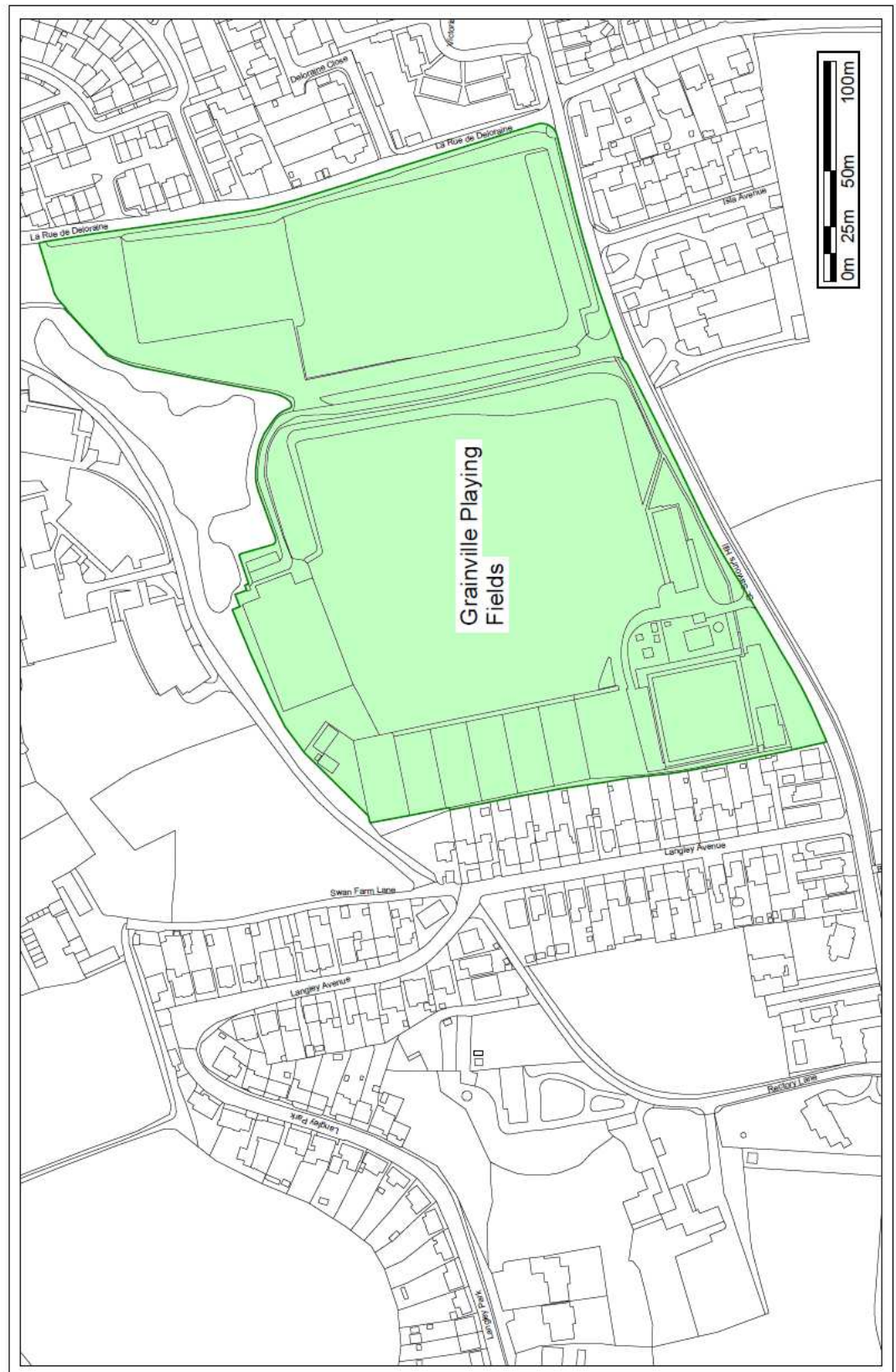
2 Citation and commencement

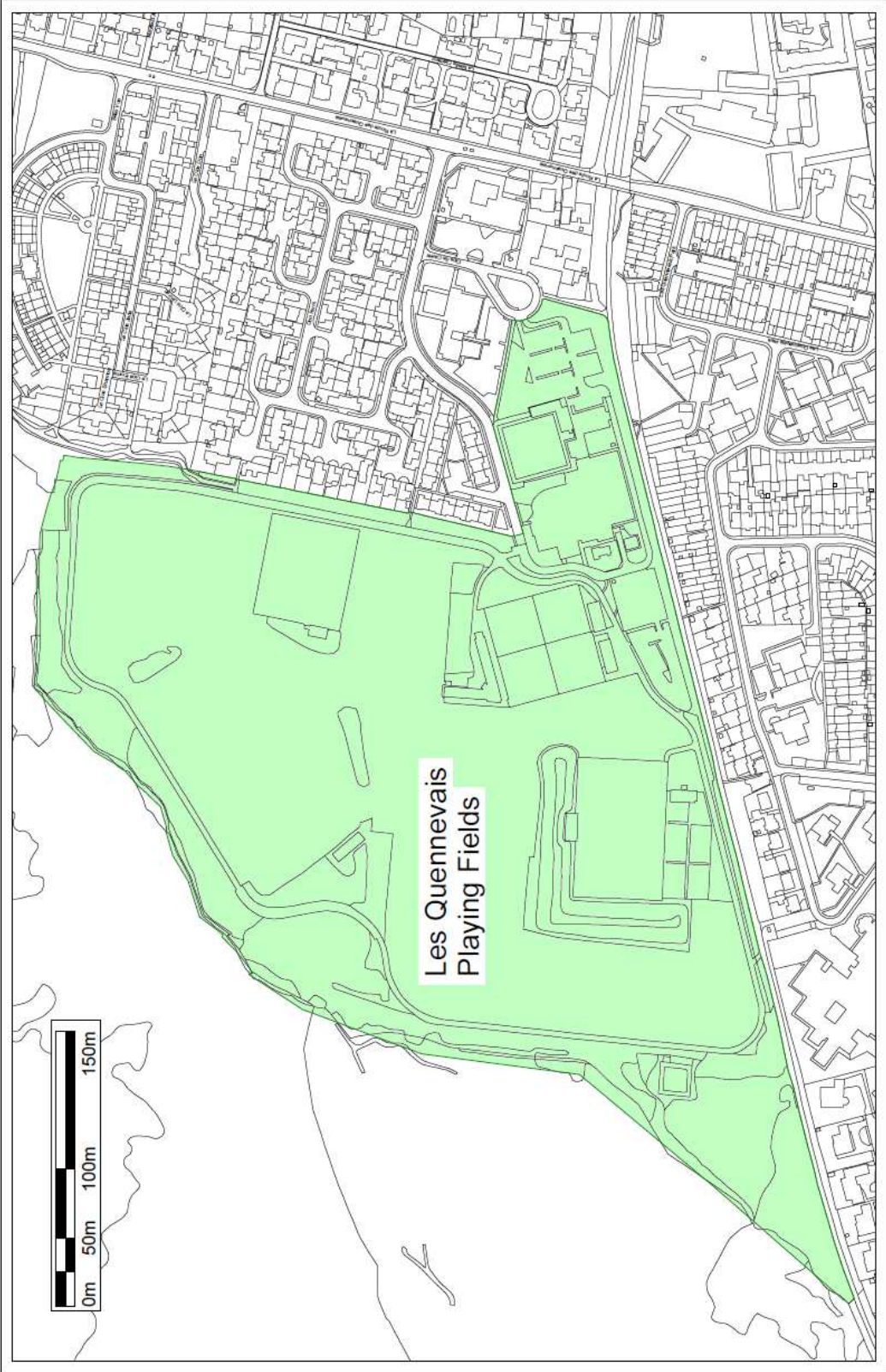
These Regulations may be cited as the Policing of Parks (Amendment No. 5) (Jersey) Regulations 201- and shall come into force 7 days after they are made.

SCHEDULE
(Regulation 1)

SCHEDULE AMENDED







-
- ¹ *chapter 23.350*
² *chapter 25.550*
³ *chapter 22.600.50*