
STATES OF JERSEY



STATES OF JERSEY POLICE: POLICING PLAN 2013

Presented to the States on 1st March 2013
by the Minister for Home Affairs

STATES GREFFE

POLICING JERSEY 2013



States of Jersey Police Policing Plan 2013

CONTENTS

	Page
Foreword by the Home Affairs Minister	2
Message from the Chief Officer	3
Policing Jersey in 2013	4
Consulting the Public	5
Noticing the Difference	6
Visible, Responsive Community Policing	7
Protecting Our Community	8
Bringing Offenders to Justice	9
Building Public Trust and Confidence	10
The Honorary Police Perspective	12
Structure, Resources and Responsibilities	13
Performance Matters	19

FOREWORD BY THE HOME AFFAIRS MINISTER

This Plan is significant in that it could be the last published by the States of Jersey Police before Jersey's first Police Authority is appointed in 2013. In future, this independent body will oversee the work of the Force and publish Annual Policing Plans and Performance Reports.

I am pleased to say that the Authority will assume responsibility for a high performing Force that has made a significant contribution to keeping Jersey as such a safe and special place. Over the last two years, Chief Officer Bowron's officers and staff have kept driving crime down and have increased public trust and confidence in policing. The 2013 Plan clearly seeks to continue these successes, building on a formula that has proved so effective over the last two years. The desire to continually improve services, deliver value for money and, most importantly, keep people safe, is evident from the steady stream of new initiatives already introduced and planned for the year ahead.

The government of Jersey is facing unprecedented challenges to deliver first-class services with fewer resources over the next few years. The Police have played their part in delivering substantial cost savings but, in doing so, they have not simply focussed on cuts to budgets but have thought differently about the way Jersey is policed and how the Force engages with the public.

Policing is all about people and it is gratifying to see the growing political and public recognition for the hard work of Police officers, Police staff and volunteers who are highly trained, dedicated and committed to those they serve.

I am confident that the successful implementation of the 2013 Policing Plan will continue to enhance public safety and I am very happy to give it my approval.

Ian Le Marquand
Minister for Home Affairs

MESSAGE FROM THE CHIEF OFFICER

Welcome to our 2013 Policing Plan. Over the past two years, the Force has gone from strength to strength despite operating with fewer resources. We have worked hard to minimise the impact of the Comprehensive Spending Review on our front line services and it is a credit to our officers and staff that they have continued to deliver performance improvements across the board whilst meeting this financial challenge.

We have made a commitment to the people of Jersey to provide visible, responsive community policing, to protect our community from harm, to bring offenders to justice and to build public trust and confidence. This Plan describes how we will continue to build upon these promises in 2013, balancing the views of the public, our own assessment of current community safety issues and our partners' priorities.

Funding, at a time of extreme economic challenges, will be tight and we will have to prioritise our spending carefully. We are continually developing our workforce, improving our systems and processes and challenging ways of working so that we can deliver the most efficient and effective policing services. Whilst budget reductions across the public sector inevitably present risks to partnership work, our strategy will be to work even closer with partners to tackle mutual problems in the most cost effective way.

We recognise that people's experience of our policing service needs to match the promises we make. Our goal is to ensure that the people of Jersey take great pride in the policing of their Island. If the public see coherent action to deliver against our commitments and people receive an excellent service when they turn to us for help, it inspires confidence. That leads to better engagement with our communities. It encourages people to report crime knowing that we will take it seriously, to challenge unacceptable behaviour and to support us in bringing offenders to justice. This philosophy underpins our change programme and has attracted much interest from other Police Forces in the UK.

I am particularly excited by our investment in developing our Police leaders of tomorrow. In 2012, we launched a Leadership Development programme, an initiative that, in itself, is leading the field in its commitment to enhancing the leadership skills of officers and staff. The initiative ensures that States of Jersey Police will nurture and develop its own talent, not only benefiting quality of service in the short term but also creating a healthy future for succession planning from within. The recent achievements of three of our staff in securing places on highly coveted national leadership training programmes serve to highlight the quality of our people in States of Jersey Police.

I would like to thank Hugh Raymond, the President of the Honorary Police for his contribution to the Plan. Our partnership with the Honorary Police is unique in policing and their voluntary contribution towards community safety in Jersey is invaluable.

Thank you for looking at our Plan. We aim to ensure people who live and work in, or visit Jersey, feel safe and are safe. We will relentlessly target those who commit crime and will endeavour to provide a service that makes a difference and makes our community proud.

Mike Bowron, QPM
Chief Officer

POLICING JERSEY IN 2013

Our Commitments

A number of factors combine to make our Island such a special place to live, visit and do business. Our contribution, individually and as an organisation, is to help ensure that Jersey is:

An Island where residents, businesses and visitors are safe and feel secure

Delivering this aim means providing an effective policing service that inspires public confidence and trust. As in 2012, the Plan continues to be based upon four commitments to the people of Jersey:

- We will provide visible, responsive community policing
- We will protect our community from harm
- We will be resolute in bringing offenders to justice
- We will build public trust and confidence

This Policing Plan sets out what we will do in 2013 to help deliver against these Commitments and keep you, your family, your friends and your property safe, whilst continuing to spend your money wisely.

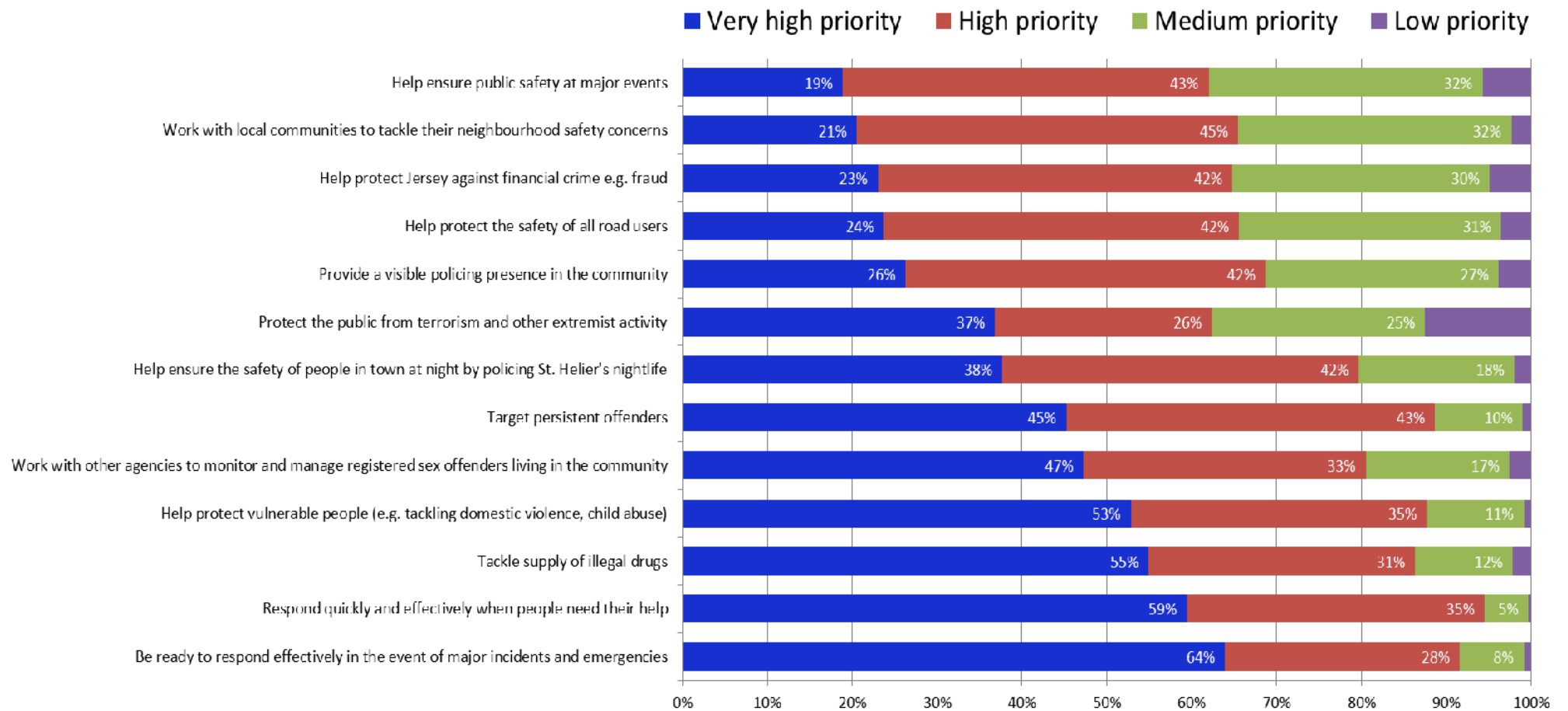
Building the Plan

In planning ahead for 2013, we have:

- asked the public and partner agencies for their views on policing objectives and priorities
- undertaken our own Strategic Threat Assessment to identify the most significant ongoing and emerging issues facing the Force;
- taken stock of what we achieved in 2012 and reviewed the impact of new initiatives on service delivery;
- carried forward those 2012 initiatives that need more time, such as the proposed introduction of Multi-Agency Risk Assessment Conferences to help protect high risk victims of domestic abuse and prevent repeat offending;
- identified new opportunities to consolidate and build upon the delivery of our four Commitments in the year ahead.

CONSULTING THE PUBLIC

In 2012, we used the Jersey Annual Social Survey to ask the public whether we were getting our priorities right. 80% of the JASS respondents who expressed an opinion thought that the Police were targeting the issues that mattered most to the community.¹ We also used JASS to help understand the public's most important priorities for policing in Jersey, making sure our resources are deployed to deliver the service our public expects.



¹ Unless otherwise stated, all calculations from JASS 2012 exclude the people who answered "Don't Know"

NOTICING THE DIFFERENCE

This section of the Plan explains how we intend to give our four Commitments tangible meaning through specific initiatives that will be recognised by the general public and people who come into contact with our services.

VISIBLE, RESPONSIVE COMMUNITY POLICING

In delivering this commitment we will:

- Provide a visible policing presence to uphold the law and reassure the public
- Provide an efficient and effective response when people need our help
- Work with local communities to ensure policing issues are tackled promptly and effectively
- Deliver an effective capability to police major incidents, emergencies and events

Community Policing

Over the past two years, we have focussed considerable effort on community policing with the introduction of the Town Policing Unit and dedicated local officers within each shift who are known to and knowledgeable about their local community.

In 2013, we will build on the success of this model by strengthening relations with minority groups in our community. In particular, we will identify named officers with specific liaison responsibilities for the Polish, Eastern European, Portuguese and Gay/Lesbian communities.

We recognise that issues such as anti-social behaviour, dangerous driving or criminal damage can have a profound impact on people's feelings of safety and their quality of life. Our regular tasking process helps identify individuals and/or neighbourhoods who need our intervention and support to address issues such as anti-social behaviour or speeding. Where appropriate, we will seek corporate support for measures such as the introduction of Alcohol Free Zones to provide long term solutions to problems in regular hotspots.

Policing the Night Time Economy

St Helier is the focus of Jersey's night time economy and, on busy weekend evenings, up to 4,000 people will be out and about in the town centre. Given the high density of pubs and clubs, limited late night transport and the current licensing laws, there is inevitably potential for alcohol-related violence and disorder when large numbers of revellers spill onto the streets at peak periods.

In 2013, we will continue to deploy double shifts of Police officers on weekend evenings as part of Operation Visible to help maintain the peace and ensure public safety in this environment through high visibility patrols, positive public order policing and licensing checks.

Road Safety

Over the past two years, we have stepped up road safety enforcement in an effort to reduce the number of people being injured on Jersey's roads. Our efforts contributed to a 10% decrease in the overall number of injury road traffic collisions in 2011. Despite wetter weather, this performance was maintained in 2012.

Looking forward, we want to build on this success and drive down the number of injury crashes still further. In particular, it is proving difficult to achieve a sustained downward trend in the number of crashes causing serious or fatal injuries. Improving the safety of motorcyclists on our roads is a key factor and this will be a focus for our efforts in 2013. We will also look to work closely with Transport and Technical Services in the development of a new Road Safety Strategy for Jersey.

PROTECTING OUR COMMUNITY FROM HARM

The work undertaken to protect the economy, society and the vulnerable from serious threat and harm is often not visible to the general public, but any failure to manage such risk could have a major impact on community safety and confidence.

In delivering this commitment we will:

- Disrupt, detect and deter activity by organised crime groups
- Manage serious and dangerous offenders residing in our community
- Help protect vulnerable people against abuse, neglect and exploitation
- Help protect Jersey against economic crime
- Protect Jersey from national security threats, especially terrorism and other extremist activity

Organised Crime

The Force manages the threats and risks posed by serious and organised crime through the nationally-recognised organised crime group mapping process. The main aims of this process are to reduce the threat and risks posed and, wherever possible, dismantle organised crime groups.

Safeguarding Children and Vulnerable Adults

Protecting children and vulnerable adults from harm remains a key priority for the Force and our partners. We are working hard with partner agencies to ensure there is a consistent approach to both child protection (including child sexual abuse, physical abuse and neglect), and adult safeguarding (including domestic abuse and abuse of vulnerable adults).

Information sharing and joint case management between agencies enables the early identification of vulnerable victims, and helps determine the appropriate response. Further developing a multi-agency approach means we will increase our ability to prevent offences, robustly manage dangerous offenders and provide high level support to victims. In 2013, we hope to work with our partners to finalise the introduction of Multi-Agency Risk Assessment Conferences and establish a Multi-Agency Safeguarding Hub.

A Child Sex Offences Disclosure Scheme (a local version of 'Sarah's Law') will come into force in Jersey from 1 January 2013. This will give people the right to ask us if someone with access to children has been convicted or suspected of child abuse. Officers will look into the background of individuals and reveal details confidentially if they think it is in the child's interests.

Financial Crime

Our role in guarding our community against harm also extends to protecting the ongoing stability of the Island's economy. States of Jersey Police play a key role in helping protect Jersey's reputation and viability as an offshore finance centre by working with enforcement agencies around the world to combat financial crime. Our compliance with internationally agreed standards will be subject to independent scrutiny in a forthcoming inspection by the International Monetary Fund.

Cyber-Crime

It is widely recognised that the internet, and its associated 'cyber' threat, are major future challenges for society and law enforcement in general. In 2013, we aim to enhance our specialist capacity and capability to provide an investigative response to cyber-crime issues.

BRINGING OFFENDERS TO JUSTICE

In delivering this commitment we will:

- Investigate crimes and, wherever possible, bring criminals to justice
- Target the prolific offenders responsible for high volumes of crime in our community
- Provide a high standard of service to victims and witnesses of crime

Key to Jersey's proud record for safety and security is our ability to identify, disrupt and detect the prolific offenders who would otherwise have a disproportionate impact on crime in our Island. Targeted pro-active policing, backed by effective intelligence processes, aims to ensure that these criminals have no place to hide. In 2013, we will run a number of pro-active operations, backed by effective intelligence processes, designed to target persistent offenders and their associates.

Operation Hornet

In 2012, we implemented Operation Hornet, which maintained a resolute focus on known and suspected burglars, whilst providing appropriate support and advice to businesses and homeowners to help make burglaries harder to commit. In 2013, we aim to build on the significant success achieved by Operation Hornet in reducing burglary and bringing key criminals to justice.

Operation Amber

We are committed to the provision of a highly-skilled and victim-focused approach to the investigation and detection of rape and other serious sexual offences. It is widely recognised, however, that such crime remains under-reported, with the attendant risk that perpetrators remain at large and keep offending. Operation Amber will be introduced in 2013 to promote personal safety in our night time economy, encourage reporting of serious sexual violence and pursue an intelligence led approach to targeting sexual predators.

Operation Crackdown

In 2013, we will introduce Operation Crackdown, a pro-active enforcement operation targeting 'Persistent & Priority Offenders' (PPOs) who are involved in acquisitive crime and associated drug supply / distribution.

In addition, we will work with partner agencies who play a valuable role in supporting changes in offender behaviour and helping address issues, such as substance misuse, which influence offending.

Victim and Witness Care

We recognise the important role victims and witnesses play in bringing offenders to justice. The Force has established a Victim and Witness Care Team to ensure it provides all victims and witnesses with a professional and consistently high level of support. The team of voluntary staff won an award in 2012 for their outstanding contribution and we will look to further developing the service in 2013.

BUILDING PUBLIC TRUST AND CONFIDENCE

In 2013, we will continue to make the best possible use of the funding and resources we are provided with in order to reduce crime, protect vulnerable people and build public confidence.

In delivering this commitment we will:

- Ensure that our staff are trained, equipped and developed to provide the best service possible
- Measure and manage our performance in order to target resources and deliver effective results
- Take advantage of every opportunity to reduce bureaucracy, cut waste and drive efficiency
- Work with partners to procure and deliver services jointly where appropriate
- Promote public awareness of what we do, why we do it and what we achieve

Police Authority

In 2013, the accountability arrangements for policing are expected to change with the introduction of a Jersey Police Authority. This will represent a fundamental change to the way in which local policing is overseen and the Authority will become responsible for publishing our Policing Plans and Annual Reports. We will play our part in ensuring that the transition to new local policing governance arrangements is properly planned so that this happens as smoothly as possible.

Value for Money

As part of the Comprehensive Spending Review, States of Jersey Police have successfully delivered over £1.8 million in savings over the last three years. Our new budget for 2013 will be £23.1 million, nearly 87% of which will be spent on staff.

To continue delivering high quality policing at a reduced cost we have already reorganised structures and reviewed our workforce profile to increase efficiency. Our programme of internal reform and organisational improvement will continue in 2013 and will include reviews of call handling, firearms' registration and changing demand and its impact on working patterns and overtime. In addition, we are at the forefront of developments to help create a more streamlined and efficient criminal justice system.

CCTV Replacement

The current CCTV system was introduced in 1995 and is effectively obsolete and increasingly difficult to maintain. CCTV not only helps provide public reassurance but is also an essential tool in protecting public safety and security through the effective deployment of Police resources. Where CCTV is available:

- Police resources are deployed where they are needed most, thereby making optimum use of available capacity to protect community safety
- Police can make swift, appropriate deployments and attending officers have prior knowledge of what has occurred, who is involved and their current location;
- Camera footage can help secure the swift conviction of offenders, thereby reducing costs associated with the investigation and prosecution processes.

Funding has been granted from the Criminal Offences Confiscation Fund to replace and upgrade the network and this project will be undertaken in 2013.

Taser

States of Jersey Police remain of the view that Tasers are an essential piece of equipment in the modern Police armoury. Their use is standard in the UK and both Guernsey and the Isle of Man because, without them, Police officers face a clear tactical gap in capability. Currently, States of Jersey Police are faced with the leap from batons and CS spray straight to firearms, with no middle-level option for responding to incidents of serious violence where members of the public – not to mention our own officers – may be at risk. Taser offers a less lethal option in accordance with Article 2 ECHR and, in 2013, we will continue to seek political recognition for the need to have access to this equipment.

Recruitment Profile

The age profile of our Force is such that a quarter of our Police officers could retire by the end of 2016. Such experience cannot be replaced overnight. It takes two years before a new recruit is fully qualified and many specialist roles require additional experience and training. Our recruitment and training strategies need to take into account the key resource challenges we will face over the next few years.

Leadership Training

In order to deliver quality services to the public it is essential that our people have leaders who inspire confidence. Continued investment in learning and development will ensure that we provide a comprehensive programme of tailored development to enhance leadership and management skills across the Force.

New Police Headquarters

Unfortunately, no decision has yet been reached on a site for a new Police Headquarters. Given the mounting maintenance and repair costs and the human rights and health and safety concerns associated with our current accommodation, the Force will do all it can to help key decision makers resolve this issue.

Social Media

Easy access to technology and the growing use of mobile internet means that an online presence is a part of many people's everyday lives. In May 2012, we re-launched our website and went live on Facebook and Twitter. In the first six months we attracted over 1,650 Facebook 'friends' and 875 'followers' on Twitter and the numbers are still growing. Social media is a powerful tool for informing communities, providing reassurance and giving out accurate information to reduce rumour and speculation. The ability to reach, and engage with, a significant number of people in a matter of minutes, will boost the Force's accessibility over the year to come.

THE HONORARY POLICE PERSPECTIVE

I am very pleased to be able to make this comment in the States of Jersey Policing Plan for 2013 on behalf of the Honorary Police. There is no doubt that we have made great strides over the last few years in understanding the roles of the States Police and that of the Honorary Police and how we can work together to promote and build public trust and confidence in what we do in policing our Parishes.

I think there had been a feeling for some time that there was a 'them and us' situation, but since the appointment of Mike Bowron as Chief Officer and with the support of the Home Affairs Minister, Ian Le Marquand, there has been a complete change in attitude between the two Forces. There is more communication and a realisation that both Forces can help each other in maintaining and promoting a safe environment in the Island. This has been spearheaded by the Chief Officer without whose input, we would not be as involved as we are today.

The Honorary Police has a big role to play in making sure that the local Parishes are policed in such a way that we may be able to prevent crime from happening because of the knowledge we have of our Parishes. We will also be there to provide the back up for our colleagues from SOJP when a major incident occurs.

The initiatives set up by the SOJP that have been taking place over the last few years, with regards to training and communication, have been very important for the Honorary Police to be part of and is essential for all of us when carrying out our roles within the Parishes. There are many events that take place throughout the year when our services are required and it is vitally important that we are prepared for every eventuality.

The Parishes will also be writing their own individual Policing Plans and I would ask that they consider the contents of the States Policing Plan. They will not be part of the new Police Authority that will be set up in 2013 but it is essential that there should be a more cohesive policy when the new Police Authority comes into force with regard to promoting initiatives like drink drive campaigns, the dangers of speeding, making sure our properties are adequately protected etc. in order to carry out their role more effectively.

I stress that we are not front line, full time police officers but we are here to help our colleagues within SOJP and to help carry out certain duties that will make Jersey a better and safer place to work and live. There are many aims in this Policing Plan but the underlying one is to see a reduction in crime which the Honorary Police fully endorses, and which I am sure will be in all the Parish Police Plans for 2013.

It has been a pleasure, in the short time that I have been President of the Honorary Police Association, to be part of something that everyone in Jersey should be proud of and be an example to other jurisdictions. The strength of the Honorary Police system can be further enhanced by building on the close working relationships with our colleagues from SOJP and the people of Jersey. I would like to thank the Chief Officer for suggesting that we make comment in Jersey's Policing Plan for 2013, something of which the Honorary Police of Jersey is an important part.

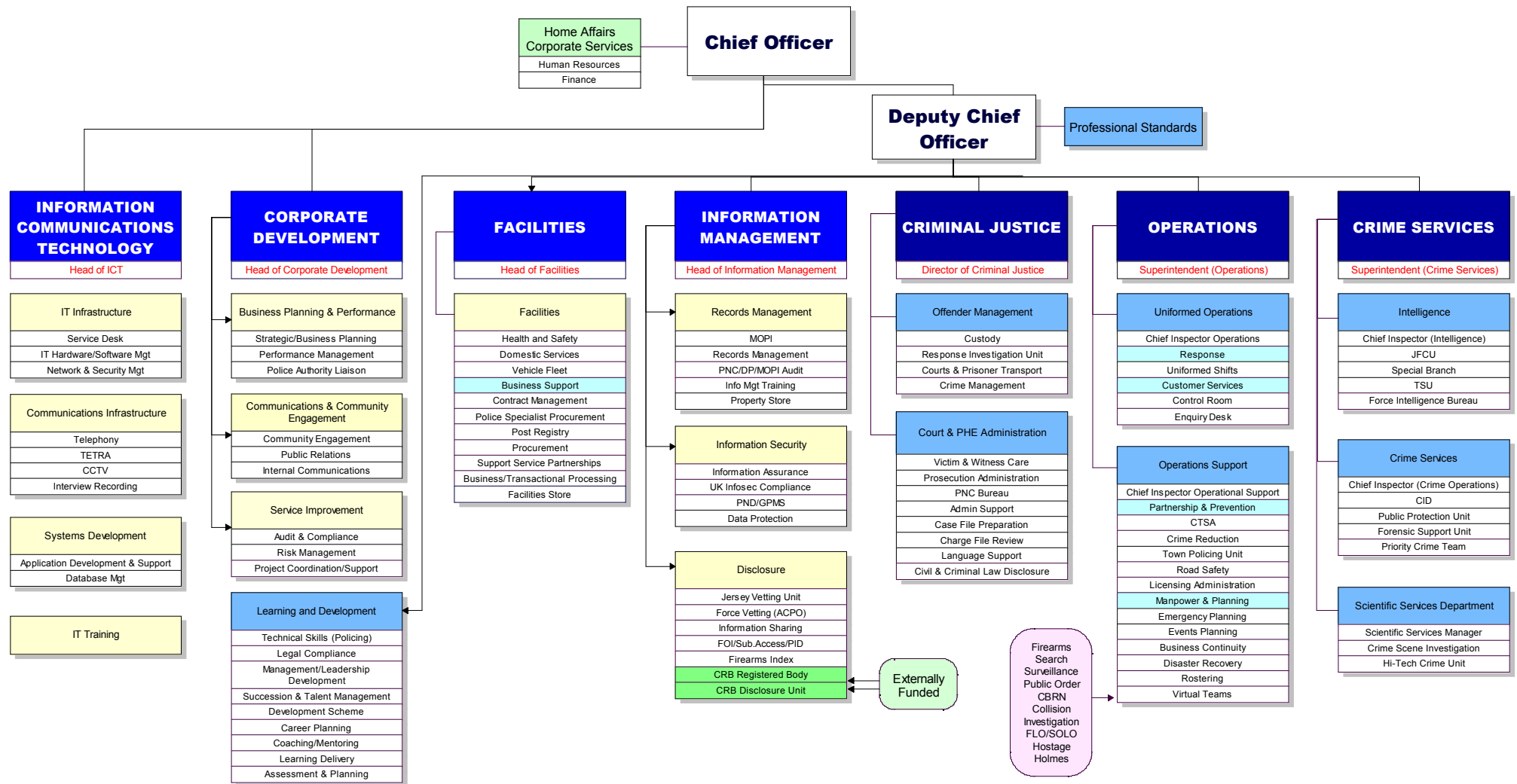
Hugh Raymond
President, Honorary Police Association

STRUCTURE, RESOURCES AND RESPONSIBILITIES

This section explains the structure of the Force and the core functions of each of our four key service areas. It also highlights the changes planned in each service area to ensure that we deliver our four Commitments efficiently and effectively.

STRUCTURE

The Force is currently undergoing a restructuring process as it rationalises departmental structures. This diagram shows the planned organisation structure for 2013 and the functional responsibilities assigned to each department.



OPERATIONS – RESOURCES AND RESPONSIBILITIES

Unit	Key Functions
Uniformed Shifts Town Policing Unit	Provide reactive incident response and investigation services Provide pro-active patrol, tasking and licensing services Provide problem-solving interventions to address neighbourhood safety issues
Call Handling	Provide call handling and enquiry services and manage incidents requiring a Police response
Licensing	Co-ordinate licensing visits and enforcement
Event & Emergency Planning	Plan the policing of major events, VIP visits, emergencies and other large scale operations
Road Safety	Develop and implement road safety education initiatives
Rostering	Manage the rostering of Police personnel to ensure optimum availability of resources

Nearly half our Police officers are deployed in Operations, with primary responsibility for the delivery of policing around the clock, 365 days a year.

CRIME SERVICES - RESOURCES AND RESPONSIBILITIES

Unit	Key Functions
Public Protection Unit	Help protect vulnerable people against abuse, neglect and exploitation Risk assess and manage potentially dangerous persons living in the community
Criminal Investigation Department	Provide specialist investigation into serious and organised crime
Priority Crime Team	Provide targeted specialist investigation into prolific offenders and street level drug dealers
Scientific Support Department	Recover and manage forensic evidence in support of Police investigations
Force Intelligence Bureau	Manage, analyse and disseminate intelligence to inform and direct policing activity
Joint Financial Crime Unit	Work locally and internationally to combat economic crime
Special Branch	Protect the public from national security threats, especially terrorism and other extremist activity

About a third of our officers are deployed in Crime Services with responsibility for the most time-consuming and serious crime investigations.

CRIMINAL JUSTICE - RESOURCES AND RESPONSIBILITIES

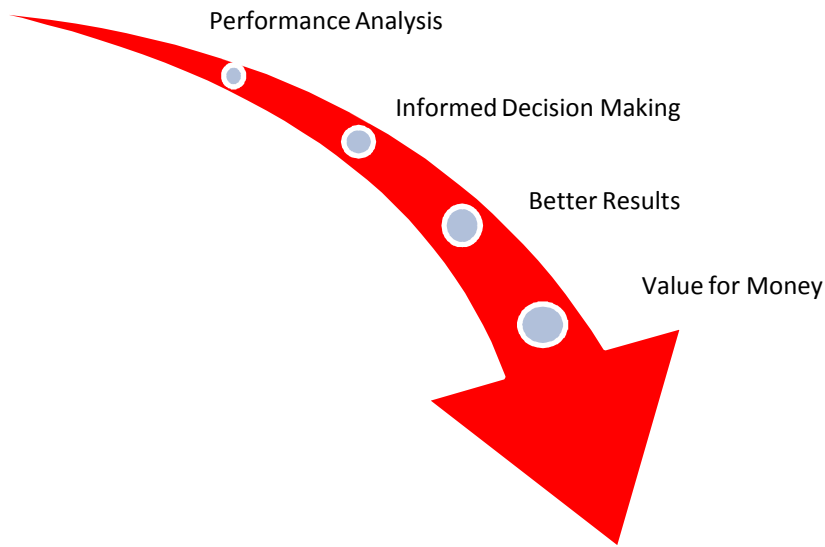
Unit	Key Functions
Custody	Manage the safe detention and dignity of detainees in Police custody Provide a prisoner transport and security service to the Courts
Response Investigation Unit	Deliver swift and effective investigation of volume crime
Crime Management	Ensure crime reports are recorded in accordance with Service and national standards
Disclosure	Manage the disclosure of evidence/information for the criminal justice system in partnership with key stakeholders
Firearms Registry	Maintain a Firearms Registry in compliance with the Firearms (Jersey) Law and related legislation
Victim & Witness Care	Provide a bespoke victim and witness care service in accordance with the Jersey Witness Charter
Criminal Justice Unit	Prepare timely and effective prosecution case files for the criminal justice system Provide administration, transcription, interpreter and translation services

The Criminal Justice Department provides the crucial link between operational policing and Jersey's unique criminal justice system.

SUPPORT SERVICES - RESOURCES AND RESPONSIBILITIES

Unit	Key Functions
Information Management	Ensure compliance with data protection, freedom of information and information security standards Manage storage, retention and return of all evidential, detained and found property Manage the screening, indexing and secure storage of Police reports and prosecution files Compliance with national standards for Management of Police Information Provide Criminal Records Bureau and vetting services
Corporate Development	Provide strategic and business planning services Measure/analyse performance to monitor community safety trends and inform operational policing Co-ordinate inspection, risk management and improvement projects Deal with media enquiries, public relations, community engagement and internal communications
Information & Communications Technology	Support, maintain, develop and secure Police ICT systems and infrastructure Support, maintain, develop and secure the town and other CCTV networks
Facilities Management	Manage, maintain, secure and clean Police buildings and vehicles Manage procurement, storage/issue of equipment, clothing and stationery Manage compliance with health and safety requirements
Training	Plan, deliver and facilitate Police training programmes

Our core business is to protect the safety and security of our community but we can't achieve this without proper investment in our support services.



PERFORMANCE MATTERS

In these times of financial austerity, there is significant pressure on the public sector to cut costs. At the same time, we must retain public confidence and trust. It is therefore vital that we continue to provide demonstrable value for money through efficient and effective policing of the crime and disorder issues that matter most to our community.

MEASURING OUR PERFORMANCE

The overarching aim of this Plan is to deliver a policing service that helps keep Jersey a safe and special place:

An Island where residents, businesses and visitors are safe and feel secure

Overall progress towards this goal is monitored against a set of key performance measures. The outcomes for the people we serve should be:

- **Low levels of recorded crime**
- **Low levels of the most serious crimes**
- **A high proportion of crime resulting in offenders being brought to justice**
- **Low levels of road traffic collisions resulting in injury**
- **Strong public perceptions of community safety**
- **High levels of trust and confidence in the Police**

We aim to achieve positive results against all these outcomes whilst working within our prescribed budget for 2013.

Measuring Key Performance Outcomes

We recognise that the likelihood of these outcomes being achieved often depends not only upon the Police but also on other agencies and wider influences in society. Whilst the Police may be best placed to measure an outcome, this does not mean we are solely responsible for the result.

Measuring outcomes is invariably complex. If we strive for the simple, we risk making policy and resource investment decisions on the basis of simplistic and inadequate information. We understand, for example, that the level of recorded crime is often seen as the definitive measure of Police effectiveness. However, we would caution against placing too much reliance on any single performance indicator without regard to the context. Recorded crime, for example, is greatly influenced by factors such as proactive policing of drugs offences, greater awareness of child protection issues and victims being more confident in reporting sensitive crime to the Police.

The outcome indicators published in this Policing Plan are therefore underpinned by detailed performance and workload measures which are used to inform management decisions. Comprehensive performance data and analysis will be published regularly during 2013 in order to ensure that the public are provided with a proper insight into local crime trends.

KEY PERFORMANCE OUTCOME MEASURES

Levels of Recorded Crime
Number of crimes per 1,000 population
Levels of the Most Serious Offences
Number of burglaries per 1,000 population
Number of grave and criminal assaults per 1,000 population
Number of robberies per 1,000 population
Number of rapes per 1,000 population
Offenders Brought to Justice
Percentage of crimes solved
Percentage of grave and criminal assaults solved
Percentage of robberies solved
Percentage of rapes solved
Number of prosecution cases brought in relation to Class A drugs supply
Road Safety
Number of road traffic collisions resulting in injury per 1,000 population
Number of road traffic collisions resulting in fatal or serious injury per 1,000 population
Public Perceptions of Community Safety
% of people who consider their neighbourhood to be very/fairly safe
Satisfaction with public safety and security in the town centre by day
Satisfaction with public safety and security in the town centre by night
A set of 'fear of crime' indicators showing the % of people who are worried that: <ul style="list-style-type: none"> ▪ they might become a victim of burglary in the next 12 months ▪ they might become a victim of violent crime in the next 12 months ▪ their vehicle/property might be vandalised in the next 12 months ▪ their vehicle might be stolen in the next 12 months ▪ they might be abused/threatened in the street in the next 12 months
Trust and Confidence in States of Jersey Police
% of people who agree States of Jersey Police do a good job of policing Jersey
% of people who are confident they would receive a good service if they needed the Police
% of crime victims who agree that States of Jersey Police do a good job of policing Jersey
% of crime victims who are satisfied with the service provided by the States of Jersey Police