

**WRITTEN QUESTION TO THE MINISTER FOR CHILDREN AND EDUCATION  
BY DEPUTY R.J. WARD OF ST. HELIER  
QUESTION SUBMITTED ON MONDAY 21st FEBRUARY 2022  
ANSWER TO BE TABLED ON MONDAY 28th FEBRUARY 2022**

### Question

“What is the total cost per pupil (the Age-weighted Pupil Unit (A.W.P.U.) or equivalent) allocated for 2022 in the Island’s 11-to-16 secondary schools and colleges?”

### Answer

The transitional formula for 2022 is not based on Age weighting, as with the former AWPU-based funding formula.

As described in the Independent School Funding Review (ISFR), we are moving towards fixing more costs and weighting resources based on need (see extract from ISFR below). This means that the figures for the schools are not easily comparable to each other as needs differ between schools, e.g. ARC provision, as do fixed costs e.g. premises costs. The transition funding levels for 2022 are as below. Please note, that these are not comparable to old AWPU.

	Average funding per pupil
Grainville School	£7,868
Haute Vallée School	£9,232
Le Rocquier School	£8,239
Les Quennevais School	£7,141

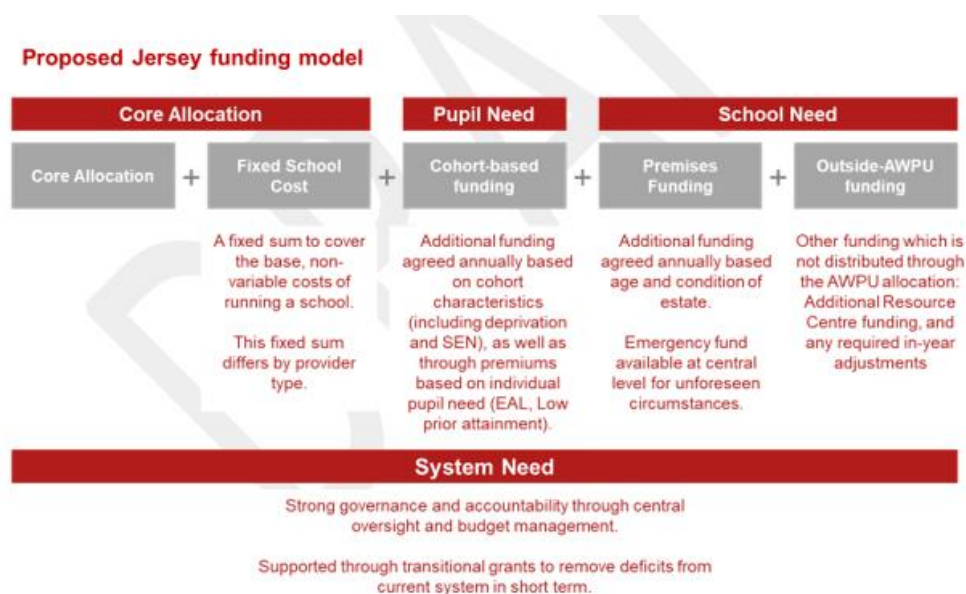


Figure 1 High-level proposed Jersey revenue funding model