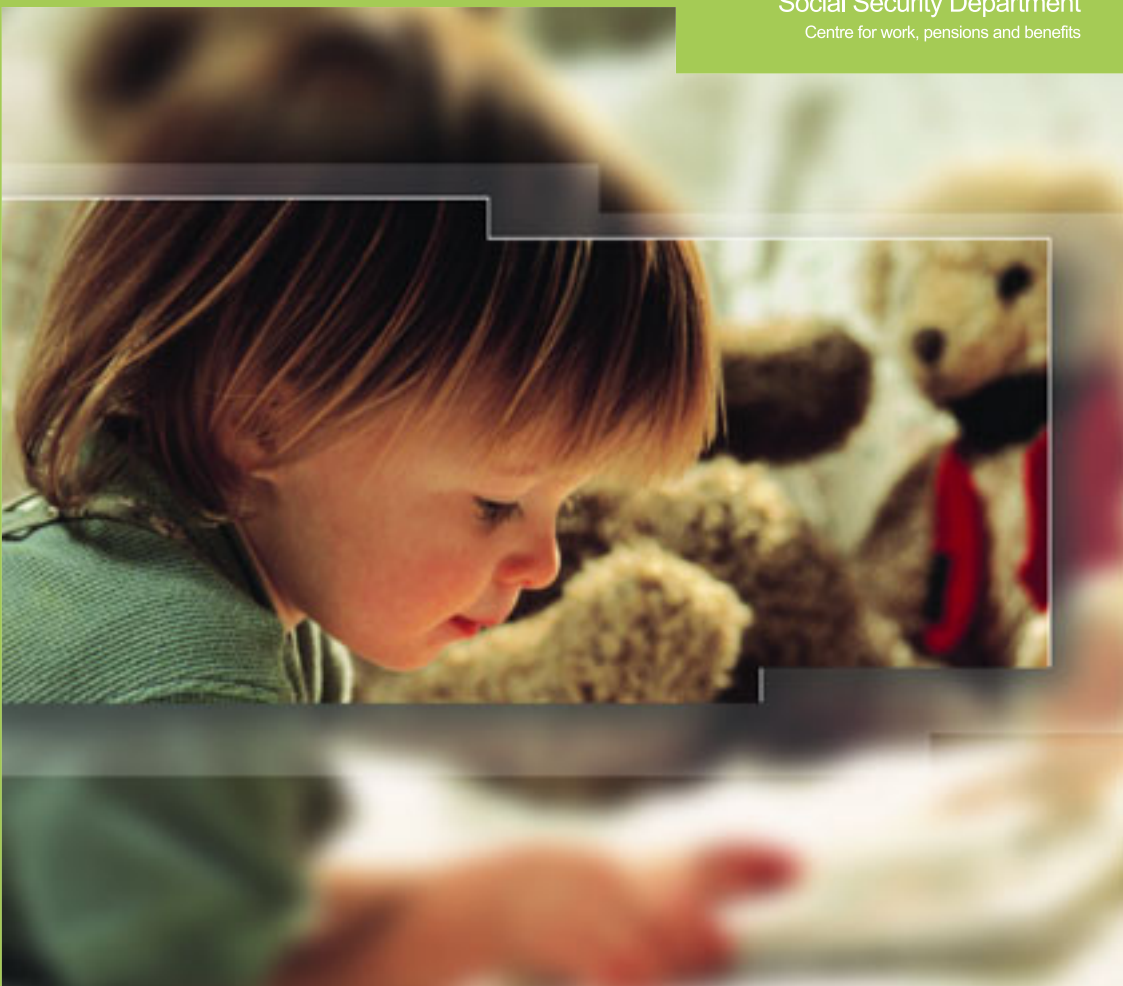


Caring for a Child at Home

States
of Jersey

Social Security Department
Centre for work, pensions and benefits



Offering... Support, Opportunity and Service

Are you likely to qualify for Home Responsibility Protection?

1	You are 18 or over and	YES ✓
2	you are under pension age and	YES ✓
3	you are staying at home to look after a child under age 5 and	YES ✓
4	the child lives with you and	YES ✓
5	you have been in Jersey for 6 months or more	YES ✓
If you answer yes to all of these statements you are likely to qualify for Home Responsibility Protection.		

Contents

Part One	
What is Home Responsibility Protection.....	2
Part Two	
Who can get Home Responsibility Protection?.....	3
Part Three	
How do I claim?	4
Part Four	
What information do you need from me?.....	4
Part Five	
What happens if my claim is not allowed?	5
Part Six	
Something has changed, should I tell you?.....	5
Part Seven	
Extra Benefits	6
Part Eight	
Further information	7

What is Home Responsibility Protection (HRP)?

If you choose to stay at home to care for your child, the Social Security scheme can help you build up your entitlement to a States Pension and Survivor's benefits.

This help is in the form of credits that can be put on your Social Security account. These credits take the place of contributions. They protect your entitlement to Pension and Survivor's benefits but do not give entitlement to incapacity or maternity benefits.

You may not be thinking about a pension at this stage of your life, but the earlier you begin planning, the better your position will be when you retire.

You can get HRP for a maximum of 10 years during your working life.

If you are unsure about your own particular circumstances, please contact the Family Zone.



Part Two

Who can get Home Responsibility Protection?

Home Responsibility Protection is for people staying at home to look after a member of their family unit who is under 5.

A family unit includes a parent, stepparent or person living with and maintaining a child.

You do not have to be married or of a different sex to your partner. Contributions can be credited to one carer per family unit only.

Both men and women can get HRP.



Part Three

How do I claim?

Claim by contacting the Family Zone at Social Security.

An Adviser will register your enquiry and send you a claim form.

You then fill in the claim form and send it back to us.

Part Four

What information do you need from me?

Apart from your name, address and a few other basic details we need information on:

- how long you and the child(ren) have lived together in Jersey;
- details that show that you cannot follow a normal employment routine because you are staying at home to look after the child(ren) and
- if you work, the number of hours you work each week.

We may also need to see copies of your child(ren's) birth certificates.

Please note: Only original birth certificates will be acceptable.

You may be allowed to do some paid work so long as your primary role is to care for the child at home. Each case will be decided on its merits.

Part Five

What happens if my claim is not allowed?

We will write to tell you why your claim has been refused. We will also tell you what to do if you are not happy about the decision.

Part Six

Something has changed, should I tell you?

Yes. We need to know if:

- The number of hours you work changes;
- The amount that you earn changes;
- You or your child change address;
- Another child or adult joins the family;
- A child or adult leaves the family;
- You or your child leave the Island for 28 days or more; and
- You or your child go into hospital for 28 days or more.

Part Seven

Extra Benefits

If you are having a baby you may be able to claim these extra benefits.

- Maternity Grant
- Maternity Allowance

If you would like more information please ring us and ask for a leaflet to be sent to you.



Part Eight

Further information

This leaflet gives general information and does not try to give full details on any particular matter. It cannot be treated as a statement of the Law.

Please contact us if you have any questions or suggestions about the information contained in this leaflet.

Our staff are here to help you, please telephone us on 445505 or call into our office.

You may find additional information on www.gov.je/socialsecurity

The Social Security Department is covered by the Jersey Data Protection (Jersey) Law 2005.

Please note: calls to the Department may be monitored for training purposes.

Notes

Other leaflets that may be of interest

- Benefits for you and your Child
- Child Care Allowance
- Family Allowance
- Health Insurance Exception
- Health Scheme
- Maternity Benefits
- People who need not pay Contributions

Large print versions of most of our leaflets are available. Please call us on 445505 and we will be happy to send them to you.

Where to find us



States 
of Jersey

Social Security Department

Centre for work, pensions and benefits

States of Jersey Social Security Department, PO Box 55
Philip Le Feuvre House, La Motte Street, St. Helier JE4 8PE

Tel: 01534 445505 Fax: 01534 445525

www.gov.je/socialsecurity www.jobsinjersey.gov.je

Opening hours: Monday to Friday 8.30am to 5.00pm

Offering... Support, Opportunity and Service