

STATES OF JERSEY



COMPOSITION AND ELECTION OF THE STATES: REVISED STRUCTURE (P.72/2009) – FOURTH AMENDMENT (P.72/2009 Amd.(4)) – ADDENDUM

Presented to the States on 8th September 2009
by the Deputy of St. Mary

STATES GREFFE

ADDENDUM

1. Explanation and data used in proportionality graphs

The following graphs show under- and over-representation by comparing the number of constituents per representative (for each parish) to the number of constituents each representative should have according to the principle of proportionality.

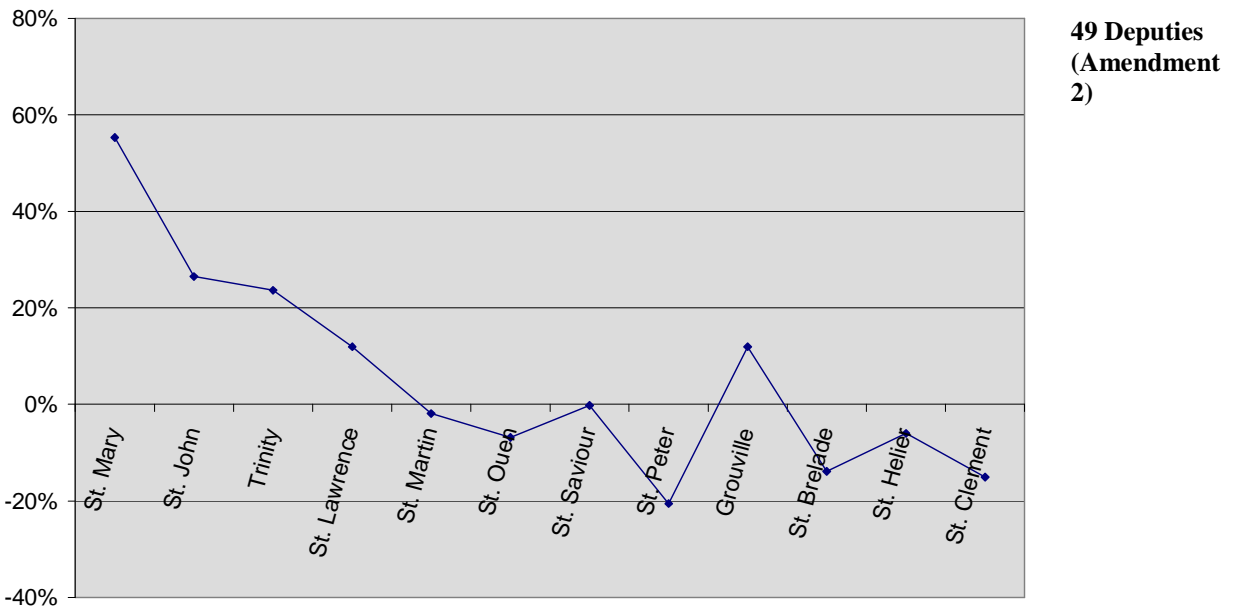
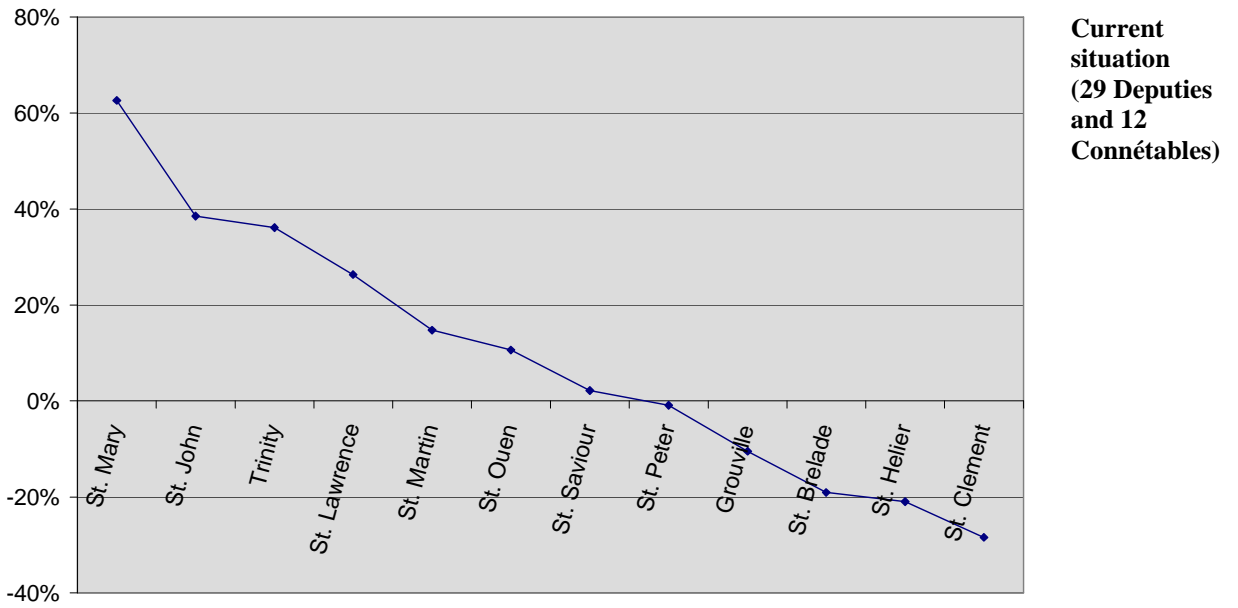
For example

Currently there are a total of 41 parish representatives (29 Deputies and 12 Connétables). According to 2001 census figures the total population is 87,233. If each member represented the same number of constituents, there should be 2,128 (87,233 ÷ 41) people per representative.

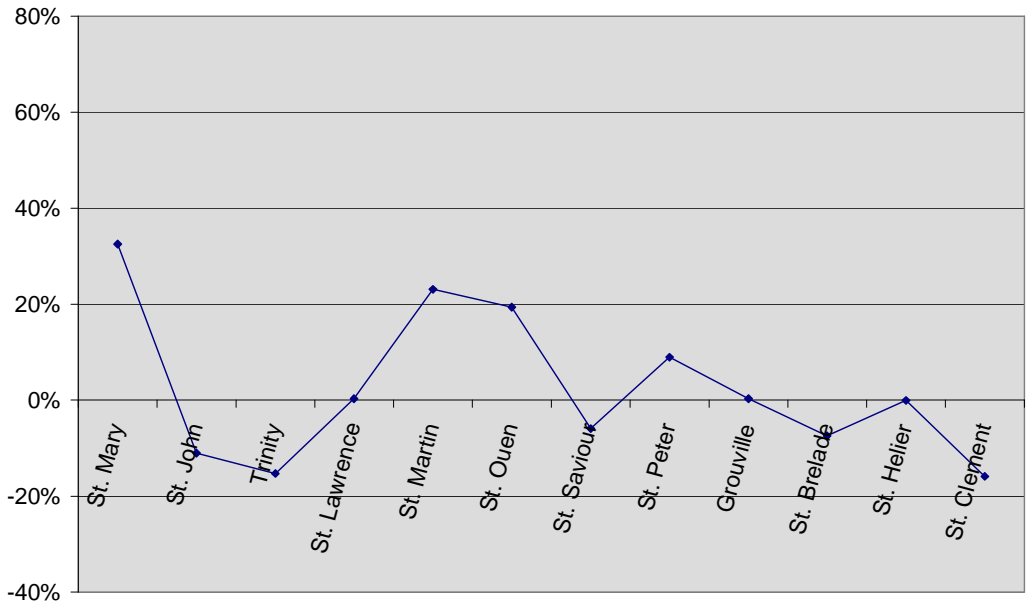
However, St. Mary has in fact 796 people per representative – a difference of 1,332. This means that there are approximately two-thirds (1,332 ÷ 2,128) fewer people per representative than there should be. St. Mary is over-represented by about two-thirds: 62.61%.

Parish	Current situation: 29 Deputies + 12 Connétables	49 Deputies (Amendment 2)	37 Deputies (Amendment 4)	12 Connétables only	Eleanor Moran's suggestion: 43 Deputies, mini-constituencies	41 Deputies, mini-constituencies
St. Mary	62.61%	55.32%	32.52%	78.11%	-3.40%	1.09%
St. John	38.48%	26.47%	-11.04%	63.99%	12.32%	1.09%
Trinity	36.13%	23.66%	-15.28%	62.61%	12.32%	0.58%
St. Lawrence	26.33%	11.96%	0.28%	35.32%	-3.40%	-10.50%
St. Martin	14.74%	-1.89%	23.06%	50.09%	-2.65%	0.58%
St. Ouen	10.63%	-6.81%	19.35%	47.68%	0.23%	4.87%
St. Saviour	2.15%	-0.23%	-5.96%	-71.83%	-2.62%	2.15%
St. Peter	-0.89%	-20.57%	8.96%	40.94%	0.23%	4.87%
Grouville	-10.50%	11.96%	0.28%	35.32%	-2.65%	-10.50%
St. Brelade	-19.08%	-13.85%	-7.46%	-39.41%	0.09%	4.74%
St. Helier	-20.96%	-6.01%	-0.06%	-289.44%	0.32%	-2.35%
St. Clement	-28.41%	-15.10%	-15.88%	-12.75%	-1.00%	3.70%

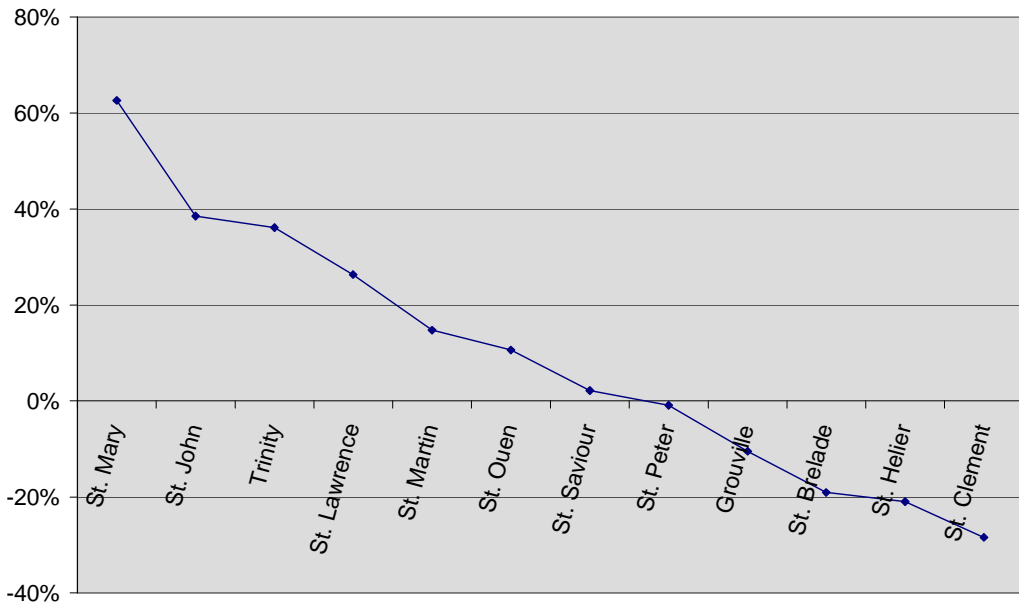
2. Comparison of over/under-representation



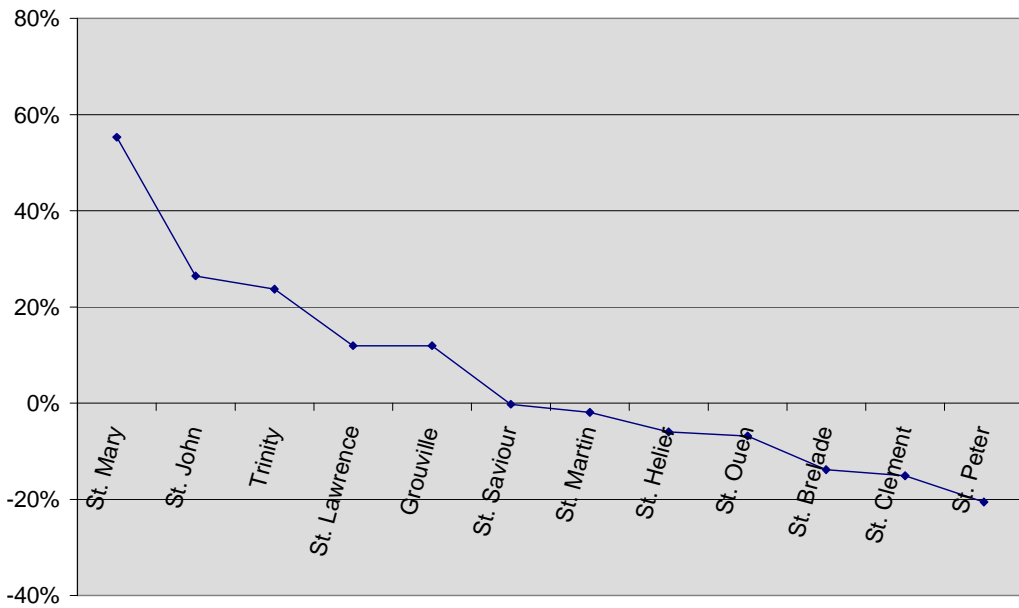
**37 Deputies
(Amendment
4)**



3. Over/Under-representation: parishes ordered by proportionality

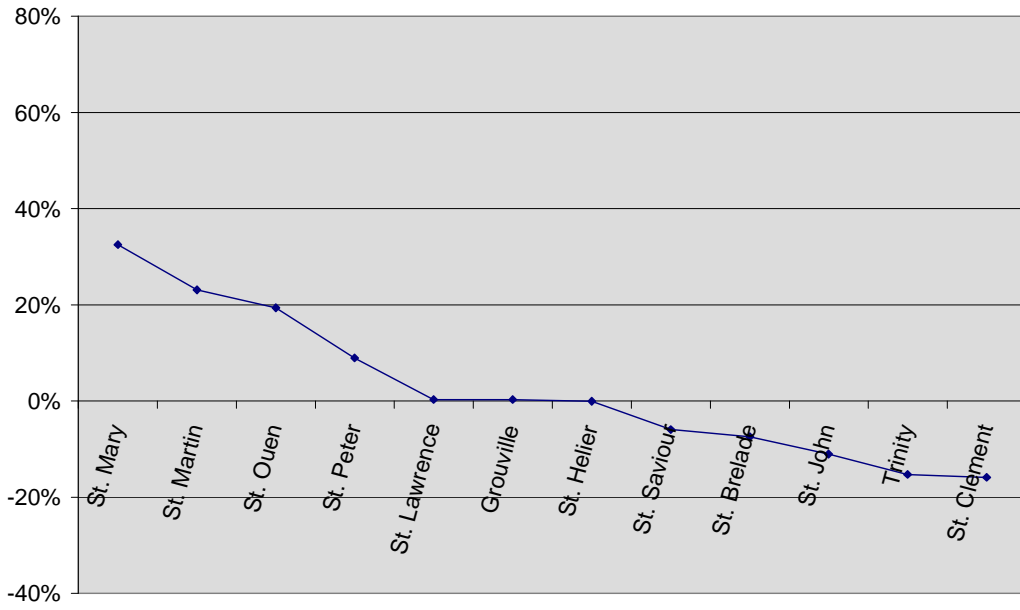


**Current situation
(29 Deputies
and 12
Connétables)**

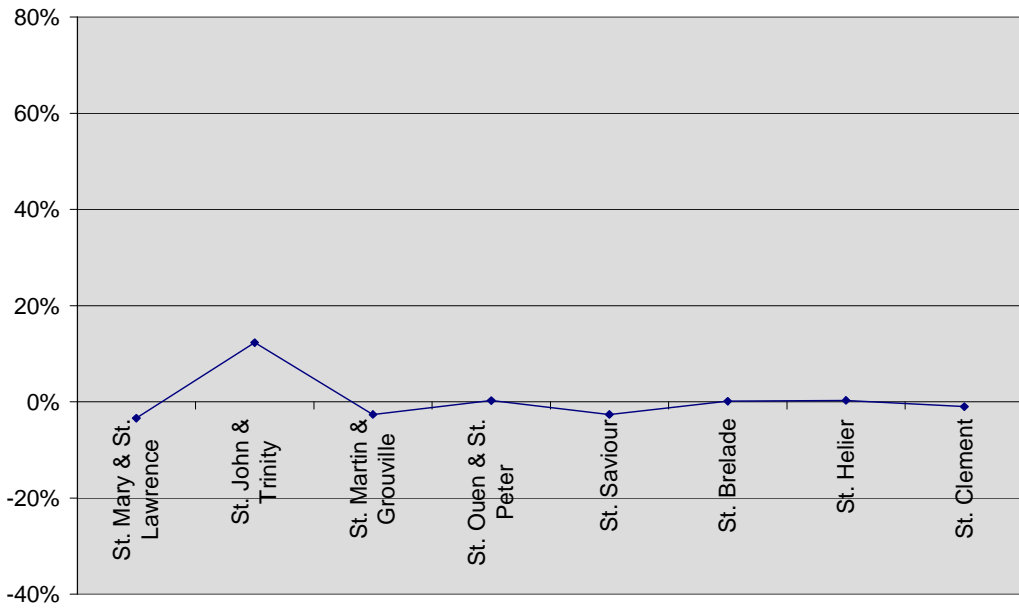


**49 Deputies
(Amendment
2)**

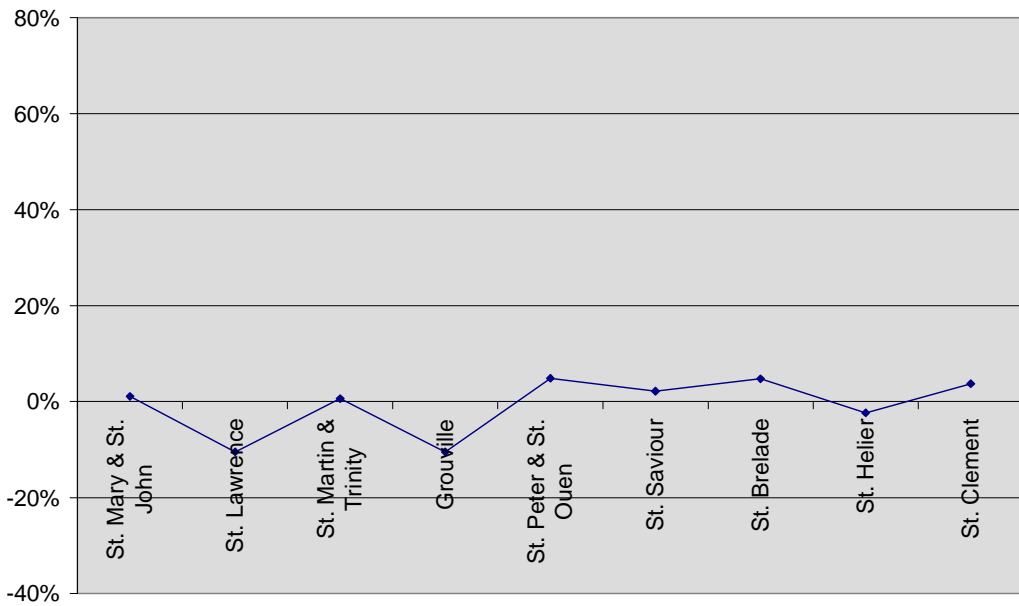
**37 Deputies
(Amendment
4)**



4. Comparison of over/under-representation

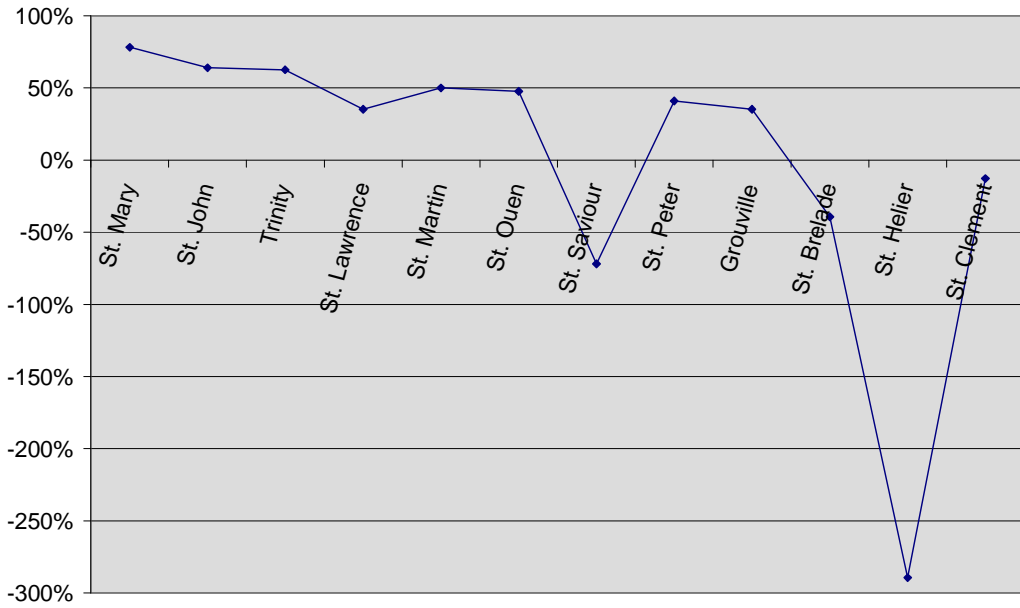


**43 Deputies
in mini-
constituencies
(E. Moran's
suggestion)**



**41 Deputies
in mini-
constituencies**

5. Over/Under-representation of Connétables – note different scale



12
Connétables
only