

# Building a Safer Society

**A Community Safety and Substance Misuse Strategy for Jersey 2016-2019**

**To minimise the harm caused by crime, anti-social behaviour and substance misuse**



# Contents

Foreword by Minister for Home Affairs .....	3
BaSS Glossary of Terms.....	4
Introduction.....	5
Background .....	6
Review .....	8
Aligning the BaSS Strategy .....	9
Picture in Jersey .....	11
Strategic Priorities & Key Objectives.....	14
Strategic priority 1 .....	15
To reduce the harms caused by crime, anti-social behaviour and threats to personal safety.....	15
Strategic priority 2 .....	26
To increase the safety of our community by supporting an integrated approach to social inclusion.....	26
Strategic priority 3 .....	37
To minimise the harm to individuals, families and communities caused by drugs and alcohol.....	37
Governance.....	54

# Foreword by Minister for Home Affairs

This updated strategy addresses the current challenges regarding crime, anti-social behaviour and substance misuse. Many agencies, from both the public and not-for-profit sectors, have been involved in its development. Although, as the title implies, we live in a safe community, we are determined to ensure our society becomes a safer and even better place to live.

Since 2005, when the first combined community safety and substance misuse strategy was formulated, we have made great strides in making our community a safer place; Police recorded crime continues to reduce, people feel safer in our communities, fewer of our young people are coming into our criminal justice system and partnership working amongst states departments, not-for-profit agencies and communities has become recognised as the most effective way of working towards shared goals.

Our three main priorities in this strategy are:

1. To reduce the harms caused by crime, anti-social behaviour and threats to personal safety
2. To increase the safety of our community by supporting an integrated approach to social inclusion
3. To minimise the harm to individuals, families and communities caused by drugs and alcohol

This strategy represents the way we, as an island, seek to address these social challenges because despite past successes, there are still new challenges, in particular the misuse of the internet to commit or facilitate crime, dangerous new psychoactive substances, and domestic violence.

It has been proved that ensuring strong foundations in early life help to build wellbeing, promote mental and physical health and help to ensure long term positive outcomes for everyone and to this end I am committed to the development of the 1001 Critical Days Agenda for Jersey. This agenda sits alongside and has direct links to the promotion of community safety and building resilience against substance misuse.

I am also committed to ensuring Jersey complies with Council of Europe Convention on preventing and combating violence against women and domestic violence (Istanbul Convention). This convention, once ratified, will ensure an ongoing commitment in Jersey to eradicate this pernicious societal problem which has an effect on women, girls, their families and communities.

The strategy has links with other key States strategies, a commitment to work in partnership and a history of success through efficient and effective use of available resources and I am confident that it offers the right approach for achieving further reductions in crime, anti-social behaviour and substance misuse and will make real improvements to the quality of island life.

**Deputy KRISTINA MOORE**



**Minister**

## BaSS Glossary of Terms

<b>ACMD</b>	The Advisory Council on Misuse of Drugs	<b>JASS</b>	Jersey Annual Social Survey
<b>ADAPT</b>	Domestic Violence Programmes for perpetrators	<b>JCIS</b>	Jersey Customs and Immigration Service
<b>ADS</b>	Alcohol and Drug Service	<b>JPACS</b>	Jersey Probation and Aftercare Service
<b>ASB</b>	Anti-Social Behaviour	<b>JVS</b>	Jersey Victim Support and Witness Care services
<b>BaSS</b>	Building a Safer Society Strategy	<b>MAPs</b>	Multi-Agency Partnerships.
<b>BBV</b>	Blood born virus.	<b>MARAC</b>	Multi-Agency Risk Assessment Conference
<b>CCA</b>	Department for Community and Constitutional Affairs	<b>NPS</b>	New Psychoactive Substances
<b>CIA</b>	Community Impact Assessments	<b>PMNW</b>	Prison! Me! No Way!!
<b>CMD</b>	Chief Minister's Department	<b>RJ</b>	Restorative Justice
<b>DAAT</b>	Drug and Alcohol Action Team	<b>SHU</b>	Strategic Housing Unit
<b>DE</b>	Department for Education	<b>SoJP</b>	States of Jersey Police
<b>DTO</b>	Drug Treatment Order	<b>SoJPS</b>	States of Jersey Prison Service
<b>EDTSC</b>	Department for Economic Development, Tourism, Sport and Culture	<b>SPB</b>	Safeguarding Partnership Board
<b>FFLM</b>	Freedom for Life Ministries	<b>SSD</b>	Department for Social Security
<b>H&amp;SS</b>	Department for Health and Social Services	<b>SSH</b>	Safer St Helier Community Partnership
<b>HCV</b>	Hepatitis C Virus	<b>VCS</b>	Voluntary and Community Sector
<b>HLOS</b>	Jersey Health and Life Opportunities Survey 2015	<b>WCU</b>	States of Jersey Police Witness Care Unit
<b>IDVA</b>	Independent Domestic Violence Advisor	<b>YOI</b>	Young offenders Institute

# Introduction

Building a Safer Society (BaSS) is a strategy aimed at minimising the harm caused by crime, anti-social behaviour (ASB) and substance misuse. This document outlines the three strategic priorities for the period 2016-2019 and includes the activities which will be undertaken in order to achieve success.

This strategy has been developed through much independent research and evaluation, community involvement and input from many stakeholders. As a community safety and substance misuse strategy, BaSS has evolved over the years, changed and fitted into various States Strategic Plans. Community Safety will be one of the key features of Jersey's new long term vision

This document is also intended as a guide to the vision for our Island, how we intend to get there and it is designed to provide the voluntary and community sector and local communities with strategic direction to help inform their own planning. It is a working document and may change as a result of research, monitoring and evaluation.

It includes long, medium and short-term initiatives; and seeks to reduce crime and disorder and substance misuse through early intervention, rigorous enforcement and rehabilitation. It incorporates, where appropriate, best practice from around the world, but also recognises that there are many local practices which are more focused and would compare favourably with those in the UK and elsewhere.

BaSS also seeks to contribute to, and where possible incorporate, the aims and objectives of other relevant reports and strategies including:

- The Criminal Justice Policy
- the 1001 Critical Days;
- Mental Health Strategy;
- Strategic Housing framework;
- the Alcohol and Licensing Strategy;
- Suicide strategy ;
- Sexual Health strategy.

It will also seek to ensure that it feeds into forthcoming strategies like the Disability strategy and Gender-Based Violence and Domestic Violence strategy.

# Background

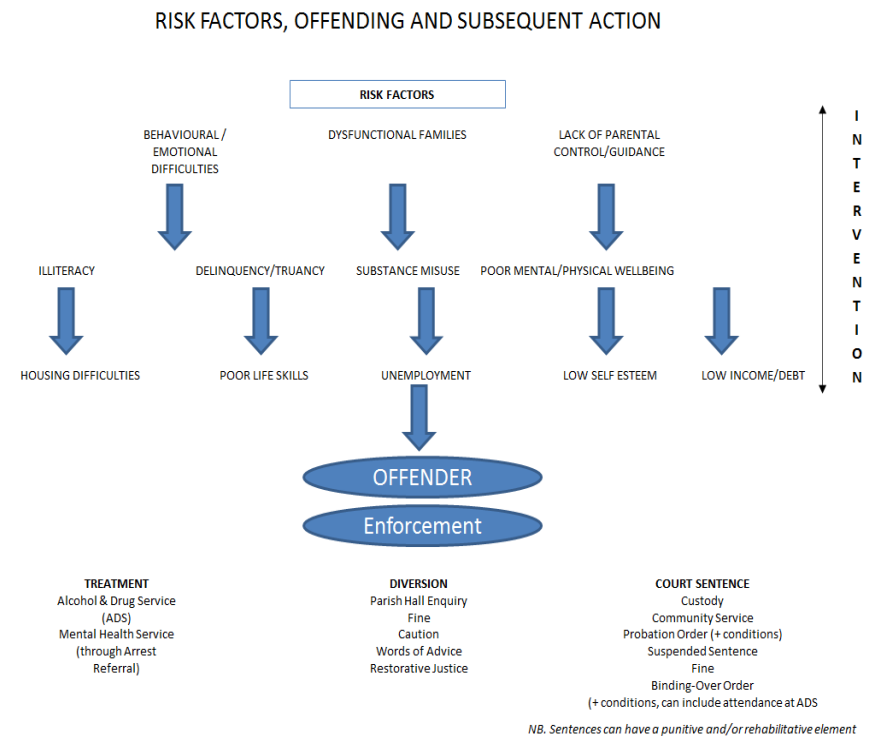
Community safety matters greatly to local people and partnership working is increasingly acknowledged as generating solutions to problems that single agencies find it difficult to solve, improving the services that users receive, and enhancing the coordination of services across organisational boundaries.

In Jersey, over the past fifteen years we have had, in one form or another, a partnership approach to tackling substance misuse and community safety and there has been a concerted effort to invest in evidence-based early interventions to mitigate the risks of offending and substance misuse.

The approach we have taken hitherto ensures a balance between long-term, welfare-based interventions aimed at reducing risk factors and medium/long-term enforcement activities aimed at reducing recidivism. In this way, we seek to minimise the harm that individuals, families and communities experience as a result of crime, ASB and substance misuse.

The harm reduction approach taken to substance misuse was based upon the evidence that reducing the harm caused by mind-altering substances was the most effective approach. Harm reduction was an approach ahead of its time, whilst elsewhere in the world a 'war on drugs' was being conducted. This approach was later adopted in most jurisdictions and more recently the UK has moved from a harm reduction agenda to a recovery agenda – that is, to encourage people into treatment and then discharge them as soon as they are drug free.

The Jersey Criminal Justice Policy (2007) has 9 pillars which include early intervention, enforcement and rehabilitation and recognises the importance of having initiatives in place to address the risk factors which contribute to offending as well as dealing comprehensively and effectively with offenders to reduce their risks of re-offending.



BaSS is based on early intervention and strong evidence-based initiatives to address many social issues that result in crime, ASB and substance misuse.

It does this by addressing risk factors and reducing recidivism in order to minimise the harm that individuals, families and communities experience as a result of crime, ASB and substance misuse.

Reducing crime, the fear of crime, and the harm caused by illegal drugs are complex issues and the identification of obstacles and solutions can be similarly complex. BaSS has always sought to address these issues at three different levels across all age groups:

- early interventions, which help prevent the likelihood of substance misuse; crime or ASB problems occurring;
- diversionary activities, which help prevent people becoming bored, disaffected and getting into trouble;
- enforcement: if a crime has been committed, responding appropriately, which ensures that the offender understands the consequence of their actions and minimises the harm to the victim.

There has been a Community Safety and Substance Misuse strategy in various forms since 1996.

BaSS has been the joint community safety and substance misuse strategy since 2005.

One of the principal aims of BaSS was to develop a comprehensive picture of crime and substance misuse in Jersey. To this end, a number of important pieces of research have been undertaken, including:

- two pieces of research into substance misuse in Jersey (2001 and 2015) ;
- a victimisation survey;
- a report on criminal justice;
- a review of provision for children with emotional and behavioural difficulties;
- ongoing Young People's Health and Lifestyle Survey (A Picture of Health);
- The Conduct And Effectiveness Of Parish Hall Enquiries;
- Anti-Social Behaviour in Jersey;
- Youth Offending in Jersey;
- Youth Justice Review
- Victim Services Review;
- Reconviction studies;
- Various research evaluations;
- BaSS Strategy Evaluation and Review.

These reports, together with existing and ongoing research, have enabled us to begin to develop a much clearer picture of the issues we face in Jersey.

Annual reports have been produced looking at outcomes and there is little doubt that there have been areas of huge success. It has a demonstrable track record of working in effective partnerships.

It is now well documented that investing in early years, evidence based interventions when issues begin and working in effective partnerships have clear and positive social and economic benefits.

# Review

In order to accurately inform a new community safety and substance misuse strategy a review was conducted. This included independent research into the 'Nature, Extent, Impact, and Response to Illicit Drug Use in Jersey' which was conducted by the Centre for Drug Misuse Research in Glasgow.

The review process commenced with an independent evaluation, then a workshop for stakeholders from voluntary, community, public and private sectors followed by a strategy development day.

The results highlighted what had worked, some areas which needed improvement and future challenges which included:

- Engaging communities and raising awareness
- Internet misuse and cybercrime
- Joined up working around Social Policy issues
- Social exclusion and equality
- Misuse of drugs especially new psychoactive substances (NPS)
- Domestic Abuse
- Mental health issues
- Ageing population
- Funding

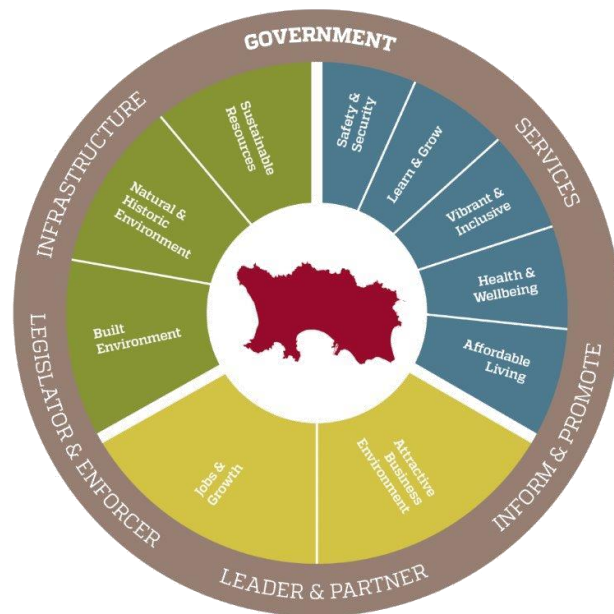
The independent drug research made several recommendations which centred around:

- Drugs Prevention Education
- Joint Working
- Performance Management and Review
- Research and Monitoring
- Enforcement
- New Psychoactive Substances
- Prescription Drugs Misuse
- Needle and Syringe Exchange
- Blood-borne Viruses
- Sexual/Family Health
- Recovery
- Shared Care
- I.T. Support and Data Analysis



# Aligning the BaSS Strategy

'Building a Safer Society' is one of the core delivery strategies supporting the 'Safety and Security' Strategic Goal of Jersey's new strategic planning process which is based upon a framework of enduring Strategic Goals against which we can define our shared ambitions for Jersey's future.



The framework recognises the vital contribution that each of these Goals makes to our quality of life in Jersey. It also highlights the inter-dependencies between the different Goals and the importance

of achieving a sustainable balance between our economic, community and environmental interests.

Each of the Goals is broken down into more detailed Outcomes. This is where each Goal takes shape into tangible subjects around which Jersey's future ambitions can be discussed and agreed. The Outcomes are supported by performance indicators which will measure progress towards the results we hope to achieve.

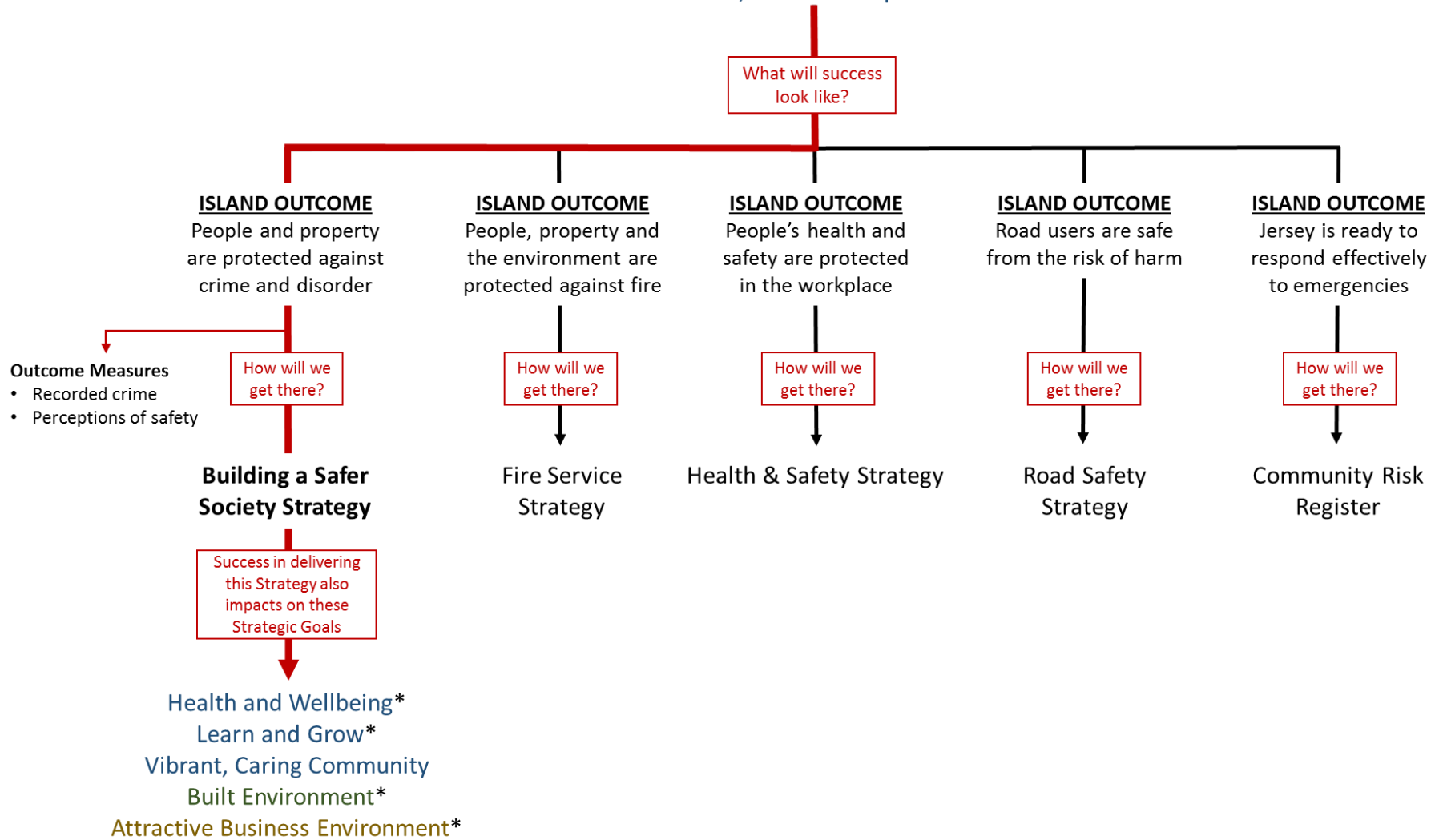
A key purpose of the planning framework is to set a coherent vision of our ambitions for Jersey's future. Whilst the vision will describe what will constitute success in the future, the detail of how we get there – what needs to be done and by whom – will be set out in core delivery strategies.

Each delivery strategy will set a longer term perspective on what we hope to achieve, but also provide a more detailed focus on planned activity in the short to medium term.

The diagram overleaf shows how BaSS not only aligns with other delivery strategies whose purpose is to ensure that Islanders feel safe and secure but also makes a vital contribution to the delivery of other Strategic Goals that make a difference to quality of life in Jersey. In particular, its focus on minimising the harm caused by substance misuse means the strategy also has a cross-cutting impact on 'Health and Wellbeing'

# STRATEGIC GOAL

We feel safe and protected at home, work and in public



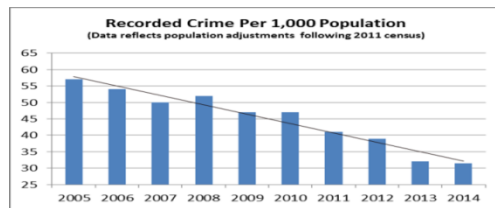
\*The Priorities set out in the Council of Ministers' Strategic Plan 2015-18 align with these overarching Strategic Goals

# Picture in Jersey

For the past 10 years, an annual report has been written and data collected on key outcomes for the strategy. The evidence below shows very positive outcomes for the BaSS strategy regarding recorded crime and perceptions of safety for residents in Jersey. The youth crime has significantly reduced since 2005 and the States of Jersey Police (SoJP) have made vast improvements with engaging with our communities and addressing equality and diversity. The consumption of alcohol has reduced significantly since 1999 and there are some effective treatments being given for substance misuse. However, the picture is not all rosy; domestic abuse remains a serious problem, our alcohol consumption is still higher than many other countries and the SoJP are seeing increases in drug-related crime. As the review showed, there are also new challenges our communities face around emerging new drugs, internet misuse (including access children and young people have to extreme pornography, internet safety e.g. sexual grooming, hate emails, e-bullying) and cybercrime.

The following picture has emerged:

Overall recorded crime per 1,000 population is the lowest since the Strategy started – 31 crimes per 1,000.



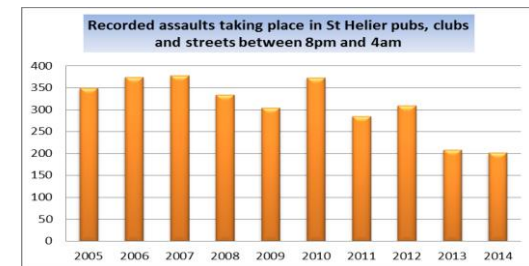
According to Jersey Annual Social Survey (JASS) 2014– 93% of people felt very safe or fairly safe in their neighbourhood (2008,



2011, 2013 no questions about safety in JASS).

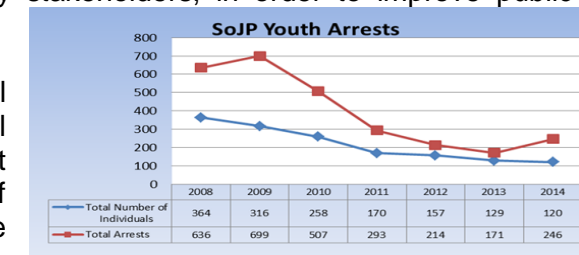
The SoJP spent much of 2014 refreshing and improving their approach to community policing. They developed a new Community Engagement Strategy as well as an Equality and Diversity Strategy. As a result, work has now started to ensure all sections of the Island's communities - irrespective of age, gender, disability, nationality, faith or sexuality - feel both included and able to approach the Police with their issues, concerns and knowledge of criminal intent or activity.

SoJP continue with an intelligence-led approach to those neighbourhood issues which can undermine public safety and quality of life, by preventing and disrupting ASB, targeting the deployment of police officers in response to demand or to known hot-spots.



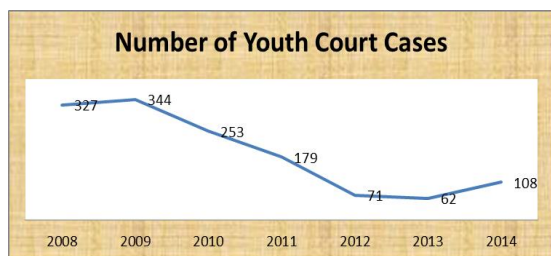
During 2013, there was a 32% reduction in night-time economy related violence and 2014 saw a further 4% reduction. The Police continue to develop effective relationships and a range of joint initiatives with the licensing trade and key stakeholders, in order to improve public safety after dark.

In Jersey, the general picture across all agencies during the last few years is that of fewer young people coming into contact with

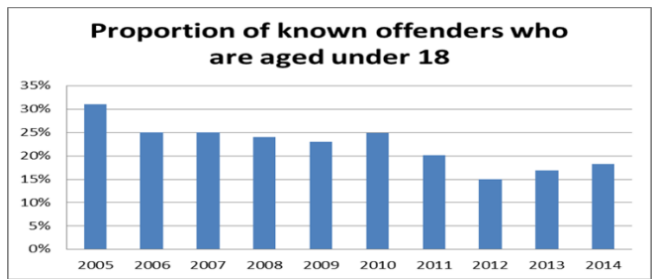
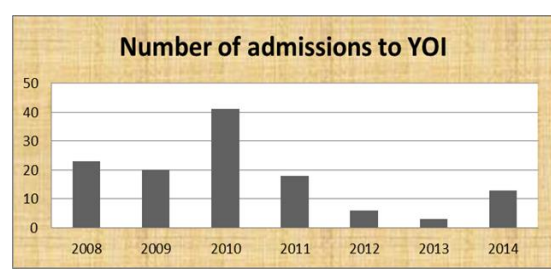


the criminal justice system. In 2014 there was a slight increase in total arrests but not in the number of youths committing offences. Overall, the workload within the Youth Court increased in numbers to 108 compared with 62 cases being dealt with in 2013. This represents an increase of 74.2% compared to 2013.

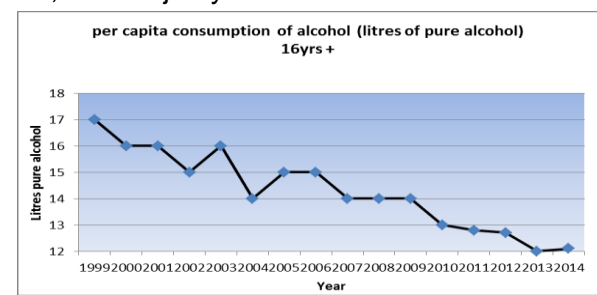
However, when this is analysed further, it can be shown to be mainly due to a small number of repeat offenders and one or two cases involving a number of youths. Whilst this increase is regrettable, it is not alarming as just under 15% of the cases were committed by one individual.



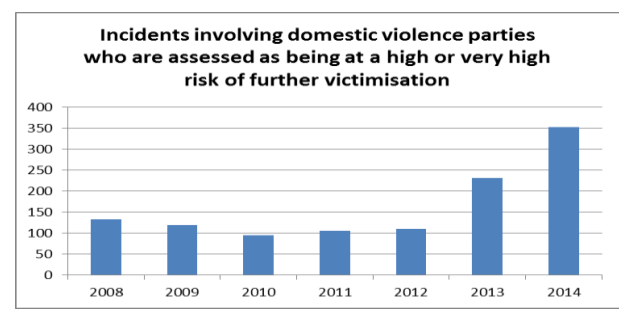
The Young Offenders Institution (YOI) at States of Jersey Prison Service (SJPS) has also seen a reduction in the number of admissions from 23 in 2008 to 14 in 2014, with a peak in 2010. The numbers reflect the number of youth admissions (not



individuals) to the prison, the majority of whom were remanded in custody. In 2010, 18 male and 2 female youths accounted for 41 admissions to the JPS. In 2014 there was only 1 youth admitted after sentence from the Youth Court but a total of 14 youth admissions related to only 4 individuals (one was admitted 10 times, another twice and two on one occasion each). Jersey has many individuals, public, private and 3rd sector agencies and faith groups working together to address the issues that cause offending and trying to prevent those that do from re-offending. In 2014, 16% of crimes were committed by 10-17 year olds (compared to 22 – 25% in England and Wales).



Domestic Violence remains an issue for our community. More than 11% of recorded crime was due to domestic violence crime in 2014 and the SoJP attended 1,133 domestic abuse incidents and 351 domestic violence crimes.



The Alcohol and Drug Service (ADS) saw a significant reduction in referrals from people aged 18 and under from 2008 to 2011. Although the figures remain low, there has been a slight increase since then. In 2011 the overall figure for under-18 referrals was 7; this has risen to 18 in 2014.

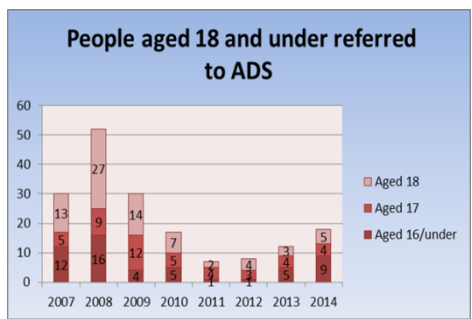
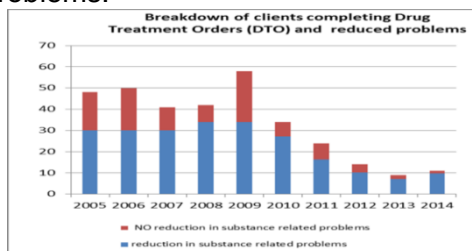
Alcohol consumption in Jersey has decreased over the last decade, from around 17 litres of pure alcohol per capita in 1999 to around 12 in 2014. This decrease is seen mainly in the consumption of beer, cider and spirits (from around 3 litres in 1999 to 1.6 in 2014). The volume of wine consumed has remained relatively more stable over this time period.

However, we still consume high levels of alcohol compared to other countries. Jersey consumption is higher than all OECD (Organisation for Economic Co-operation and Development) European countries apart from Lithuania.

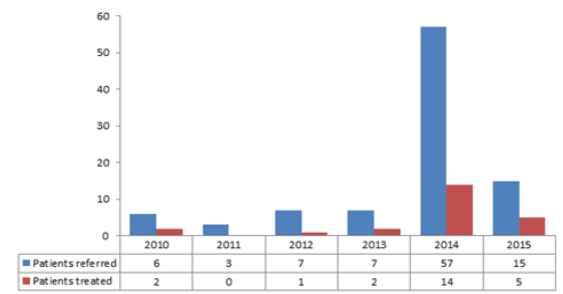
The majority of offenders get through their orders with a resultant improvement in their CHRISTO (Social skills, health, attendance, attitude, and drug/alcohol use) score. This means the Drug Treatment Orders (DTO) are effective, in the majority of cases, in reducing substance related problems.

When compared to 2012, (199 recorded drug offences) there were 31% fewer drugs offences recorded in 2013 (138) by the SoJP. However, that number rose by 32% to 205 in 2014. The offences included the possession, supply, importation and manufacture of illegal substances.

The number of people being referred to ADS for taking New Psychoactive Substances (NPS) has



risen from 6 in 2010 to 57 in 2014. This is partly due to a greater awareness of the health risks and costs of using NPS. Those receiving treatment have also risen from 2 in 2010 to 14 in 2014 as more young people are seeking help as well as a rise in referrals from agencies. So far in 2015 the numbers are falling.



2014 saw a sharp increase in the levels of drug-related crime, which also reflects increased focus and activity by the Police during that year.

Considerable work was done to raise the awareness and understanding of the dangers of (NPS) or so-called 'legal highs'. In addition to promoting this message on Police vehicles, posters and social media, the Police also worked with the Prison! Me! No Way! and jointly visited the majority of schools to explain the associated dangers.

244 separate drug seizures of imported drugs were made in 2014 and the total value of the drugs seized was £950,301. There was a distinct increase in the seizure of NPS on previous years with a total of £187,651 being seized during 2014. Although postal importations continued to be a popular method for getting NPS into the Island, passengers arriving at the Ports were also found to be importing NPS. Toward the end of 2014, £500,000 worth of cocaine was seized, believed to be on its way to Jersey as a result of a JCIS target operation jointly undertaken with the French Customs Investigation Service (Direction Nationale du Renseignement et des Enquêtes Douanières DNRED).

# Strategic Priorities & Key Objectives

The following section of the strategy details our three strategic priorities for minimising the harm caused by crime, anti-social behaviour and substance misuse. Each priority has objectives whose actions will fulfil the priorities.

The format for this section is as follows:

## **Strategic Priorities:**

- 1. To reduce the harms caused by crime, anti-social behaviour and threats to personal safety**
- 2. To increase the safety of our community by supporting an integrated approach to social inclusion**
- 3. To minimise the harm to individuals, families and communities caused by drugs and alcohol**

**Agencies** – List of the key agencies which will be involved in delivering the initiatives relating to the Strategic Priority. The agency designated as ‘Priority Co-ordinator’ will be responsible for collating and reporting to the Children and Vulnerable Adults (CAVA) policy group (see governance structure page 54)

**Introduction** - Provides the reader with background information relevant to the Strategic Priority.

**Key Objectives** – Highlights what action needs to be taken in order to achieve the Strategic Priority.

Each key objective is in turn separated into:

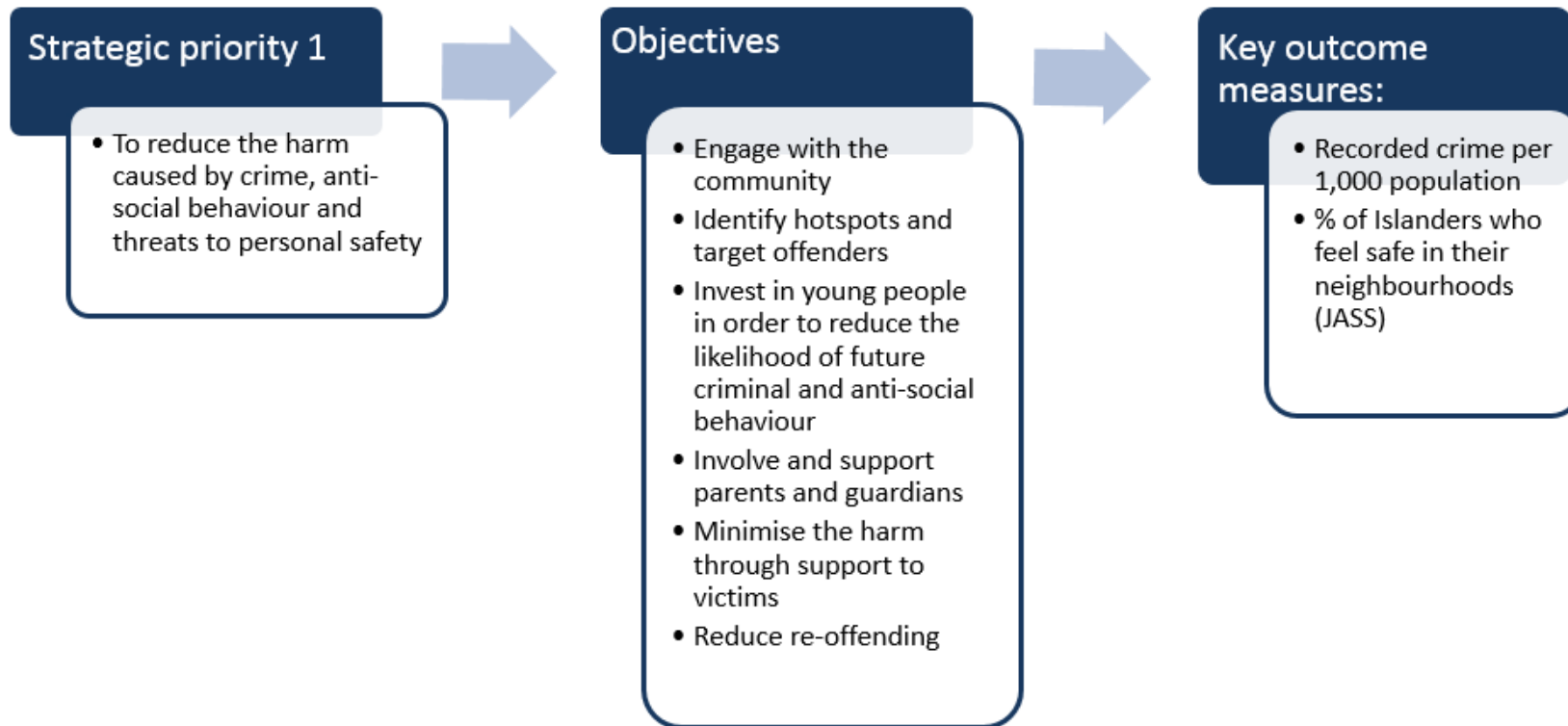
- **Delivery of key services:** Provides a list of initiatives and projects which are already being undertaken and which should be maintained. Most form part of agencies core work
- **Build for the Future:** initiatives which will build upon the work already done to maintain our safe community.

**Key Measures:** These are high level, strategic measures which will help to monitor the success of the strategy as a whole.



## Strategic priority 1

To reduce the harms caused by crime, anti-social behaviour and threats to personal safety



## Priority 1 lead - States of Jersey Police (SoJP)

### Agencies:

States of Jersey Police (SoJP)  
Honorary Police (HP)  
Community and Constitutional Affairs (CCA)  
Strategic Housing Unit (SHU)–various housing providers  
Education Department (ED)  
Economic development, Tourism, Sport and Culture (EDTSC)-Sport  
Health & Social Services (H&SS)  
Jersey Probation & Aftercare Service (JPACS)  
The States of Jersey Prison Service (SoJPS)  
Jersey Customs and Immigration Service (JCIS)  
Voluntary and Community Groups for example, Prison!Me!NoWay!!  
(PMNW), Freedom Street, Street Pastors, Safer St Helier (SSH)

### Introduction

Crime, disorder, ASB and threats to personal safety are of major concern to local people. According to the Jersey Annual Social Survey, 2014(JASS), level of concern over different types of crime has continued to reduce and “Safety” was the most highly rated factors in terms of what residents like about living in Jersey, rated as ‘very important’ by 82%<sup>1</sup>

Since the strategy started in 2005 we have made many inroads into the overall crime rate in the Island, and at the end of 2014 recorded crime had reduced from 57 per 1,000 population (2005) to 31 (2014).

This has been achieved through a number of agencies and individuals in the public, private and voluntary sectors working

together effectively. However, we cannot be complacent and with the advent of the internet, cybercrime and cyber-enabled crime (including ordering illegal drugs on-line and child sexual abuse) has become a new area for concern. In addition, domestic abuse now features in 20% of all Jersey’s reported crime.

The strategy will support the work being done by the Safeguarding Partnership Board which has been proactive in a number of areas including addressing Child Sexual Exploitation.

This part of the strategy aims to build upon the successes we have had so far whilst finding new ways to tackle new crimes. The following pages detail our plan to make Jersey an even safer place in which to live, work and play.

---

<sup>1</sup> Jersey Annual Social Survey, 2014, Statistics Unit, States of Jersey.



## Objective 1: Engage with the community

It is now commonly acknowledged that successful neighbourhood crime reduction means putting communities in the driving seat. Resident and partnership participation is needed at all stages, from identifying problems and agreeing priorities, to developing and delivering solutions and tracking progress. Achieving this can be

extremely difficult. Over the last few years there has been a significant improvement in local participation, with initiatives not only designed to improve the safety of the area but the overall quality of life. It is imperative that this momentum is maintained and improved upon.

### Delivery of key services

Operational delivery	Lead
✓ Community police officers who are visible and accessible to the public and work with local residents, schools and businesses to address community safety issues this includes close working with Andium Homes.	SoJP
✓ Partnerships with Prison!Me!NoWay! (PMNW) to help deliver community safety and key substance misuse messages to schools and wider community	PMNW/SoJP/CCA
✓ Honorary Police maintaining peace and social order in the parishes with the consent of their parishioners.	Parishes
✓ SoJP social media sites are very successful and have been running now for almost two years and the number of SOJP followers continues to grow day-by-day.	SoJP
✓ Community Service through the Jersey Probation and After Care Service	JPACS
✓ Restorative justice	JPACS
✓ Continue to deploy community evening sports initiative to engage young people and promote social inclusion	EDTSC
✓ Cross-Agency work with Department of Infrastructure addressing issues in the parks.	SoJP
✓ Use the Q-Safe Taxi Marshall Scheme to help residents and visitors feel safer by reducing conflict and disorder at taxi ranks	SSH

## Build for the future

Service	Lead
➤ Build greater understanding of hard to reach groups in the community, their needs and how to engage with them	SoJP
➤ Build upon the successful use of social media by the Youth Service and Police to engage with young people in order to ensure that key community safety messages from other government departments and voluntary and community groups reach this target audience	SoJP/CCA/MAP
➤ Develop a community engagement strategy including one for reaching people who do not have/want access to digital communication and include a communications strategy specifically for young people, in order to facilitate better use and integration of social media to engage young people and build on the good work done by SOJP and Youth Service. It is vital to engage with young people to raise their awareness about the causes and consequences of crime, its effects upon the local community and the impact upon its victims.	SoJP/CCA
➤ SoJP are doing some major work on Equality and Diversity, this will continue and be completed in 2016. This then needs to be joined up with other agencies work in order to mainstream.	SoJP/ CCA

## Objective 2: Identify hotspots and target offenders

In Jersey, as has been found in other countries, some neighbourhoods tend to suffer higher levels of crime and ASB than others. It is also true that a large proportion of crime is committed by a small minority of offenders. This objective will make use of the

National Intelligence Model and the tasking and co-ordinating process to identify 'hotspots' of crime and ASB. It also aims to target prolific offenders by the use of intelligence sources.

### Delivery of key services

Operational delivery	Lead
✓ Enhanced police community engagement, Intelligence-led approaches, long-term, focused operations that target those who are known to be habitual offenders and close liaison and development of relationships with the Honorary Police and the Jersey Youth service to deliver policing that meets the community needs and targets those most at risk of offending.	SoJP
✓ Jersey's Multi-Agency Public Protection Arrangements (JMAPP)	Multi-Agency partnerships (MAP)
✓ Police supervision of and working with licensed premises, the SoJP continue developing a more proactive approach to policing the night-time economy by introducing a Licensing Support Team (LST).	SoJP
✓ Effective supervision of offenders on community orders by Jersey probation and aftercare Service has maintained a low risk of re-offending	JPACS
✓ Crimestoppers work to provide an anonymous phone- line providing the SoJP with vital community information	Crimestoppers
✓ Joint Intelligence sharing with Jersey Customs and Immigration to better target traffickers	SoJP/JCIS

### Build for the future

Service	Lead
➤ Increased partnership working to support SoJP and, where applicable, identify other agencies better placed to assume a lead in certain circumstances for example sometimes officers within housing providers can better engage and build relationships with their clients concerning ASB. It is important that these relationships become embedded.	SoJP/MAP
➤ Development of Personal Safety warnings and related policy	SoJP

### Objective 3: Invest in young people to reduce the likelihood of future criminal and anti-social behaviour

The vast majority of our young people are law-abiding and a credit to the Island. In Jersey, in 2014 only 3.4% of the total population of 14-17 year olds were known to have committed an offence. In 2014, 16% of detected crimes were committed by 10-17 year olds (compared to 22 – 25% in England and Wales)<sup>2</sup>. However, the general picture across all agencies since 2008 is that far fewer young people are coming into contact with the criminal justice system (CJS). The aim of this objective is to prevent young people from offending in the first place, deal effectively with those that do offend and ensure that every effort is made to stop young people from becoming persistent offenders.

#### Delivery of key services

Operational delivery	Lead
✓ Community Sports Programmes, Youth enquiry service (YES), Move on Youth Café, Street based Youth Work, Youth Service and Prince’s Trust are examples of key players in investing in our young people. Their work helps to promote good outcomes and build resilience which ultimately leads to less likelihood of future criminal and ASB	DofE
✓ Many voluntary services provide initiatives to build resilience in our young people and range from Freedom Street (who go out on the streets of St Helier in order to engage with young people on Saturday nights), PMNW, Brighter Futures – a charity working in partnership with Parenting Support Services to meet the needs of families and young people to Women’s refuge outreach services who deliver a programme designed to build resilience in young people against becoming a victim of domestic abuse.	Voluntary and Community Sector (VCS)
✓ Addressing offending behaviour and providing opportunities for self-development while in prison custody	SoJPS
✓ Diversion from the formal system through the continued use of Parish Hall Enquiry (PHE) and other informal mechanisms to influence positive behaviour	Parishes
✓ Restorative Justice, JPACS Mentoring Scheme,	JPACS
✓ Persistent offenders are dealt with expediently to reduce delays in the CJS.	SoJP
✓ Re-introduction of a SoJP schools liaison post, SoJP are working to gain a better understanding community needs, particularly young people	SoJP

<sup>2</sup> Building a Safer Society Annual Report, 2014.

## Build for the future

Service	Lead
<ul style="list-style-type: none"> <li>➤ Support the development of targeted interventions for those not in education, employment or training. Young people who are engaged are less likely to offend and whilst messages are important, interventions will supply a pathway towards better outcomes.</li> </ul>	DofE
<ul style="list-style-type: none"> <li>➤ Support the 1001 Critical Days agenda for Jersey- The first few years of a child's life are fundamentally important. Evidence tells us that they shape children's future development.</li> </ul>	CCA/Chief Minister's Department (CMD)
<ul style="list-style-type: none"> <li>➤ Domestic abuse: support development of domestic abuse initiatives for young people including support for young people as victims and perpetrators of domestic abuse and adult victims of youth perpetrators of domestic abuse.</li> </ul>	CCA/Safeguarding Partnership Board (SPB)
<ul style="list-style-type: none"> <li>➤ Support for families and children of offenders – evidence suggest children of offenders are at high risk of becoming involved in crime and ASB themselves.</li> </ul>	JPACS
<ul style="list-style-type: none"> <li>➤ Support development of cyber-crime initiatives – those that are targeted at young people as well as engagement of young people so they understand the risks.</li> </ul>	SoJP/CCA/VCS

## Objective 4: Involve and support parents and guardians

The aim of this objective is to ensure that parents are provided with the support necessary to develop skills, which help them to

successfully provide care, appropriate supervision and guidance to their children. This particularly applies to vulnerable families.

### Delivery of key services

Operational delivery	Lead
<ul style="list-style-type: none"> <li>✓ Continue to work in partnerships to provide support for parents through Parent Support Services and other specific initiatives e.g. PMNW roadshows.</li> </ul>	MAP

### Build for the future

Service	Lead
<ul style="list-style-type: none"> <li>➤ Support the development of targeted interventions for parents who need help with offending or pre-offending teenagers but who are reluctant to “criminalize” their children by seeking help from the police.</li> </ul>	CCA
<ul style="list-style-type: none"> <li>➤ Support the development of Child and Family centres: recognizing the important role parents and grandparents play in bringing up children, further development of parenting support services, improve emotional and wellbeing support for parents.</li> </ul>	CCA/CM
<ul style="list-style-type: none"> <li>➤ Domestic abuse: support development of domestic abuse initiatives for adult victims of youth perpetrators of domestic abuse.</li> </ul>	CCA/SPB
<ul style="list-style-type: none"> <li>➤ Support the development of a family policy statement to help clarify our vision for Jersey as a family-safe place to live</li> </ul>	CCA
<ul style="list-style-type: none"> <li>➤ Support for families and children of offenders – evidence suggests children of offenders are at high risk of becoming involved in crime and ASB themselves.</li> </ul>	JPACS

## Objective 5: Minimise Harm through Support to Victims

Minimising the harm to victims is central to the success of this strategy. Building on the previous crime and community safety strategy, this strategy intends to ensure that anyone who becomes a victim of crime has access to the appropriate services in order to minimise the effect that crime and ASB has upon them and their family. This includes issues around cyber bullying and other cybercrime. This objective becomes particularly pertinent when we

look at the domestic abuse statistics which featured in 20% of all Jersey crime in 2014; where over half of all domestic incidents involved children and over half also involved alcohol. Compliance with the Council of Europe Convention on preventing and combating violence against women and domestic violence (Istanbul convention) and addressing gender-based violence is also an integral part of this objective.

### Delivery of key services

Operational delivery	Lead
✓ Continue to support the delivery of Victim Support services.	JPACS
✓ Work in partnership between JPACS, Honorary Police, SoJP, the Safeguarding Partnership Board and voluntary and community groups has been instrumental in reducing harms to victims. Some of the initiatives include Restorative Justice, Jersey Victim Support and Witness service, SoJP Witness Care Unit (The Appropriate Adult Service and Intermediary provision), Jersey Women's Refuge and Outreach, ADAPT Domestic Violence Programmes for perpetrators, Multi-Agency Risk Assessment Conference (MARAC) to develop the holistic solutions that individual cases of domestic abuse require and Independent Domestic Violence Advisors (IDVA)	MAPs
✓ Development of adult safeguarding of vulnerable adults has provided a key link to protecting victims	SPB

### Build for the future

Service	Lead
➤ Support, coordinate and facilitate community based support groups to deliver coherent services with public sector agencies (e.g. Jersey Action against Rape).	JPACS/CCA

➤ Support the development of an overarching policy on violence prevention which breaks down into a series of objectives e.g. gender based violence, domestic violence with action plans for the different key areas which are aligned to the central strategy.	CCA
➤ Support for more outreach services to, older people and people with disabilities – in order to prevent crisis and minimize fear.	H&SS
➤ Support for updating the laws regarding cyber-crime to include, revenge porn, cyber bullying and support the implementation of the SoJP cyber policing strategy.	EDTSC/SoJP
➤ Support for compliance with Council of Europe Convention on preventing and combating violence against women and domestic violence.	CCA
➤ Support for the review and updating of the Sexual Offences (2003) Act.	CCA
➤ An independent review has been carried out into Victim Services in Jersey, it made some recommendations aimed at improving services to victims including the development of an integrated victim service.	JPACS
➤ Work is progressing at updating the DAISY software programme for data sharing between criminal justice (CJ) agencies. This will help provide a more seamless service and improve efficiency in the CJ agencies	JPACS/CCA/MAP
➤ Investigate the possibility of research into the extent and nature of gender-based violence in Jersey.	CCA



## Objective 6: Reduce Re-offending

According to international and local research, nearly half of all crime committed by males is the result of repeat offending. Therefore, by

focusing on those that re-offend we can make a significant contribution to the overall aim of reducing crime and ASB.

### Delivery of key services

Operational delivery	Lead
✓ JPACs deliver various evidence based programmes which have been proven to help reduce re-offending e.g.- Cognitive Skills Training, Basic Skills Programme, The ADAPT Domestic Violence Programmes for perpetrators (in partnership with the Jersey Domestic Violence forum), Restorative Justice, Portuguese Offender Worker.	JPACS/JDVF
✓ The Jersey Prison Service also deliver pre-release motivational work, and other accredited programmes designed to reduce re-offending and work with Freedom For Life Ministries(FFLM)to help with the resettlement of prisoners.	SoJPS/FFLM
✓ The SoJP conduct bi-weekly Tactical Co-ordinating group work which includes a review of persistent priority offenders and vulnerable persons, they work with JPACS and other agencies on the JMAPPa to oversee public protection with high risk offenders and designing out crime in conjunction with Planning.	SoJP and partners
✓ JPACs conduct accredited risk assessments on their clients which together with regular reconviction studies are vital tools in assessing what works to reduce re-offending. JPACS continues to promote alternatives to custody as an effective tool in reducing recidivism	JPACS

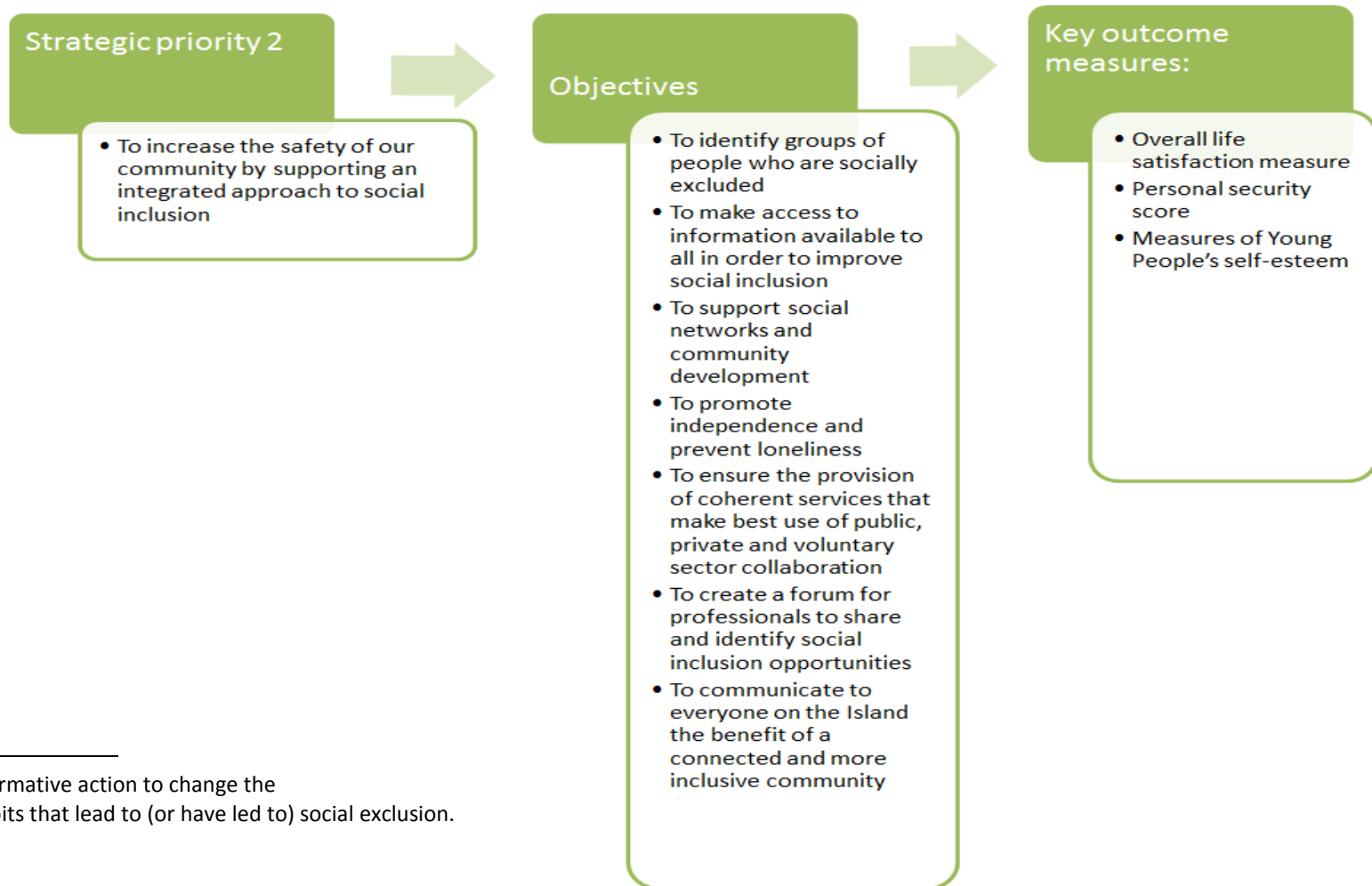
### Build for the future

Service	Lead
➤ Support the development of mental health pathways within the criminal justice system to promote appropriate diversion and opportunities for treatment	CCA/ H&SS
➤ Support the development of programmes for young people who abuse parents. The ADAPT perpetrators programme has proved very successful with adults but is inappropriate for under 18s.	SPB
➤ Support for families of offenders	JPACS/MAP

## Strategic priority 2

To increase the safety of our community by supporting an integrated approach to social inclusion

3



<sup>3</sup> Social inclusion, is affirmative action to change the circumstances and habits that lead to (or have led to) social exclusion.

## Priority 2 lead – Community and Constitutional Affairs (CCA) Policy team;

### Agencies

Voluntary agencies

Parishes

Jersey Probation and Aftercare Service (JPACS)

All States Departments including:

Education (ED)

Youth Service

Economic Development, Tourism, Sport and Culture (EDTSC) - Sport

Health & Social Services (H&SS)

Strategic Housing Unit (SHU) and housing providers

Social Security Department (SSD)

Community and Constitutional Affairs (CCA) – Priority lead

States of Jersey Police (SoJP)

States of Jersey Prison Service (SoJPS)

### Introduction

This part of the strategy focuses on reducing the risk factors that can lead to destructive behaviours like criminality, ASB and/or substance misuse.

There are a number of factors which we know can drive these behaviours, including low self-esteem, poor school attainment, low levels of literacy and numeracy skills, lack of worthwhile employment, poverty and social exclusion<sup>4</sup>. Some of the most

---

<sup>4</sup> Social exclusion (or marginalization) is social disadvantage and relegation to the fringe of society and individuals or communities are thus prevented from participating fully in the economic, social, and political life of the society in which they live.

powerful drivers of crime are community deprivation and income inequalities resulting from unemployment. Crime is also associated with poor health, parenting factors, drugs and alcohol misuse, school exclusion, leaving care and prison. A criminal record is itself likely to lead to exclusion, having an impact on the chances of obtaining employment in particular. These factors are both drivers and sometimes consequences of those destructive behaviours. The most important characteristics of social exclusion are that these problems are linked and mutually reinforcing. Social exclusion can only be tackled through multi-agency action.

This part of the strategy focuses on what can be done to provide people with the necessary skills and opportunities to ensure that they do not find themselves in these situations.

**We strongly believe that everyone has the potential to become active and responsible members of our society.**

## Objective 1: To identify groups of people who are socially excluded.

People need the opportunity to participate in society if they are to flourish and realise their potential. Social exclusion deprives people

of choices and opportunities to escape from poverty and denies them a voice to claim their rights.

### Delivery of key services

Operational delivery	Lead
✓ Island wide surveys like the Better Life Index, The Jersey Lifestyle and Opinions Survey (previously JASS) , and the Living Wage Detailed Report (including relative poverty) and the Income Distribution Survey enable evidence based services to be implemented and help identify those who may be at risk of being socially excluded.	Statistics unit at CMD
✓ H&SS Island wide Wellbeing survey and the Young People's Health and Lifestyle survey which is distributed to school children, provide a picture of lives in Jersey which enable longitudinal data to be kept and help recognise where interventions need to be targeted.	H&SS

### Build for the future

Service	Lead
➤ Use the findings from Health and Life opportunities survey (HLOS) to help develop a strategy to address the issues that people with disabilities face including the consideration for a Young Carers Programme and a carers strategy.	CCA/HSSD
➤ Anti-Discrimination laws (of particular relevance now following the PRIDE event in St.Helier in 2015 and the equal marriage decisions) the Youth Service are also doing an increasing amount of work with young people around LGBT issues.	SSD, Youth Service, CCA
➤ Address stigma on mental illness by supporting the development of a Mental Health Strategy.	H&SS and partners
➤ Support for an analysis of the needs of those not in education, employment or training. This is a key driver of social exclusion and is a major risk factor for criminality and substance abuse.	SSD,CCA

## Objective 2: To make access to information available to all in order to improve social inclusion.

Equal access to public information plays an important role in creating an inclusive society, as it will make participation possible with well-informed members of society. Information that pertains to the society, such as what a community owns, generates, or benefits from, should be made available to all. Collective participation, through accepted representations of all classes and backgrounds,

in the planning, implementation and evaluation of community activities should be sought after. Publication/information sharing and increasing the accessibility of the community's activities will eliminate doubts and suspicions which could otherwise create a sense of exclusion. Digital exclusion is increasingly highlighted as a risk factor for social exclusion.

### Delivery of key services

Operational delivery	Lead
✓ The Youth Enquiry Service, Citizens Advice Bureau, Jersey On-line Directory and local parish/community centres all provide access to information.	Various agencies
✓ The States of Jersey and other agencies communicate through social media, links are provided for various expert sites. The States of Jersey and the SoJP have a social media strategy.	CMD

### Build for the future

Service	Lead
➤ There is information available but it remains un-coordinated – support for a Social Media strategy to address the lack of internet social media channels on which to effectively engage with young people.	CCA
➤ Language Support policies need to be in place across the States of Jersey	CCA
➤ Support for a communication strategy to ensure that sources of information are available at the right level to the right people is important	CMD and partners

### Objective 3: To support social networks and community development.

The existence of a strong civil society is fundamental for active participation and making public policies and institutions accountable. It fosters a respect for the rights, dignity and privileges of all people, while assuming that they fulfil their responsibilities within their society. There must be freedom for people to express

diverse views and develop unconventional unique ideas. Members of society must have the confidence to engage and interact with each other, and build mutual trust while acknowledging their differences.

#### Delivery of key services

Operational delivery	Lead
✓ Community engagement initiatives like Safer St Helier who manage the Q-Safe taxi marshal scheme.	CCA
✓ The Youth Parliament has been successful in engaging those young people who are very well motivated and articulate	Youth Service
✓ There have been tangible reductions in offending behaviour through the community sports initiative. This outreach initiative makes contact with young people through sport.	CCA/ EDTSC
✓ SoJP community policing aims to listen, learn and engage better with all our community but especially those who may lack the confidence, knowledge or even ability to contact them for support, advice or help. To this end they have lead officers for age, disability, faith, LGBT and race engagement.	SoJP

#### Build for the future

Service	Lead
➤ Support the Children's and Young Persons framework objective to Have a voice and be heard- work has been done by the youth service to engage many young people and this requires ongoing support.	CCA/Jersey Youth Service
➤ Support for and engagement with the voluntary and community sector, many social networks are built through volunteering and voluntary associations are a means by which individuals establish both a sense of belonging and an awareness of commitments to others.	ED/CCA
➤ Promote the voting rights of 16-18 year olds, aiming to ensure they understand and use their right to vote. Jersey is unique in the British Isles in having this right for this age group to vote in a government election.	CCA/ED

## Objective 4: To promote independence and prevent loneliness.

Loneliness harms health, with a physical effect equivalent to that of smoking or alcoholism, not exercising or obesity. At a deeper personal level, it means the loss of hope, energy and contribution from daily lives spent in quiet desperation. Loneliness is part of the web of 'social exclusion': that combination of linked problems which together have a negative impact on a person's life. Our most vulnerable citizens often experience multiple disadvantages: living alone and/or without children, poor health, no access to transport, not owning their own home, low income, no phone, and old age.

In Jersey, the population projections are that in the next 20 years the number of pensioners will rise from 16,700 to approx. 28,000 and those over 85 years will double in number in the next 20 years.<sup>5</sup> Loneliness is, of course, something we can all face, and there is some evidence that young adults experience similar levels of loneliness to much older people. Social and community policies must grapple with these complex interlocking problems

### Delivery of key services

Operational delivery	Lead
✓ The Youth Service runs an inclusion initiative and works with agencies like Autism Jersey. This ensures young people are included in many initiatives they would otherwise have no access to.	Youth Service
✓ The Parishes Community Support Teams and residents associations run through various housing providers e.g. Andium Homes, together with back to work initiatives and charities like Age Concern and Silver line (providing information, friendship and advice to older people) work hard to provide alternatives for all people that help promote independence.	SHU, SSD, Parishes and various charities
✓ Community Savings is a charity which aims to support those in the community who are financially or socially disadvantaged. It operates like a credit union, providing basic account facilities, help with budgeting and, in certain circumstances, emergency funding loans	Community Savings

<sup>5</sup> Jersey population projections, 2013 release, States of Jersey Statistics Unit.

## Build for the future

Service	Lead
➤ Support activities that increase independence like walks organized by health promotion and parish based walks	Parishes/H&SS
➤ Parish welfare as a mechanism to address need, no longer exists so support should be given to the work done in parish support groups to increase independence and help recognise signs of early self-neglect.	Parishes
➤ Develop links with agencies that help to promote independence like Grace Trust, Salvation Army, emergency food providers, University of third age and Barnados.	CCA
➤ Support for new strategies like the Social Housing strategy, the Suicide strategy which aim to address cause and effect of loneliness and exclusion.	CCA.



## Objective 5: To ensure the provision of coherent services that make best use of public, private and voluntary sector collaboration.

The community and voluntary sector plays an important role in Jersey society, fulfilling a wide range of needs and wants for the community. The benefits that emerge from a vibrant sector lifts the Island into a better place to live and work, generating positives by

providing services and assistance to those in need, volunteering for those who need to develop their skills, a way for people to become involved in their communities or simply leisure opportunities.

### Sustain delivery of key services

Operational delivery	Lead
✓ Charities like Shelter trust, Barnados, NCCP, PMNW, and many other diverse organizations including the parishes provide services that are highly valued and provide opportunities for volunteering.	Diverse agencies
✓ 1001 Critical days is an initiative that aims to ensure coherent and joined up services from conception to 2 years old. It recognises the importance of this time in our lives as a vehicle for developing strong foundations and aims to co-ordinate voluntary, community, business and public sector input.	CCA
✓ The SoJP are working with the community to understand gaps in their knowledge and develop relationships with representative groups.	SoJP

### Build for the future

Service	Lead
➤ Support the development of a new Charities law to encourage the voluntary and community services to flourish	CCA
➤ Communication strategy/plan – to ensure that sources of information are available at the right level to the right people.	CMD

➤ Support the development of gender-based and domestic violence strategies to ensure that services are being used in the most effective way.	CCA/SPB
➤ Public sector reform- to provide the best possible services in the most effective and efficient way, this will help to forge better links between States departments and other agencies	All States Departments

## Objective 6: To create a forum for professionals to share and identify social inclusion opportunities

Promoting social inclusion tends to be seen as important but not urgent work, and so it can be repeatedly pushed aside by crises unless dedicated time is allocated. As well as specialising in

inclusion work, substantial progress can be made when workers share out responsibility for community connection and capacity building in mainstream community services.

### Build for the future

Service	Lead
➤ Encourage the formation of a Jersey Disability Partnership – which needs engagement over style, size and representation.	CCA
➤ Work in partnership with the not-for profit sector to establish forums to share knowledge and expertise.	CCA/JVCS

## Objective 7: To communicate to everyone on the Island the benefit of a connected and more inclusive community.

Another dimension of inclusive societies is tolerance for, and appreciation of, cultural diversity.

This includes societies that celebrate multiple and diverse expressions of identities. By celebrating diversity, there is a recognition and affirmation of the differences between and among members of society, which enables societies to move away from labelling, categorizing, and classifying people, towards more inclusive policies. Also, enabling a diversity of opinions provides the checks and balances crucial for the development of society, while

allowing for the greatest amount of diverse opinions to enter every discourse.

To create and sustain inclusive societies, it is critical that all members of society are able and motivated to participate in civic, social, economic and political activities. A society where most members, if not all, feel that they are playing a part, have access to their basic needs/livelihoods, and are provided with the opportunity to participate in decision-making processes that affect their lives, is a society that will best foster principles of inclusiveness.

### Sustain delivery of key services

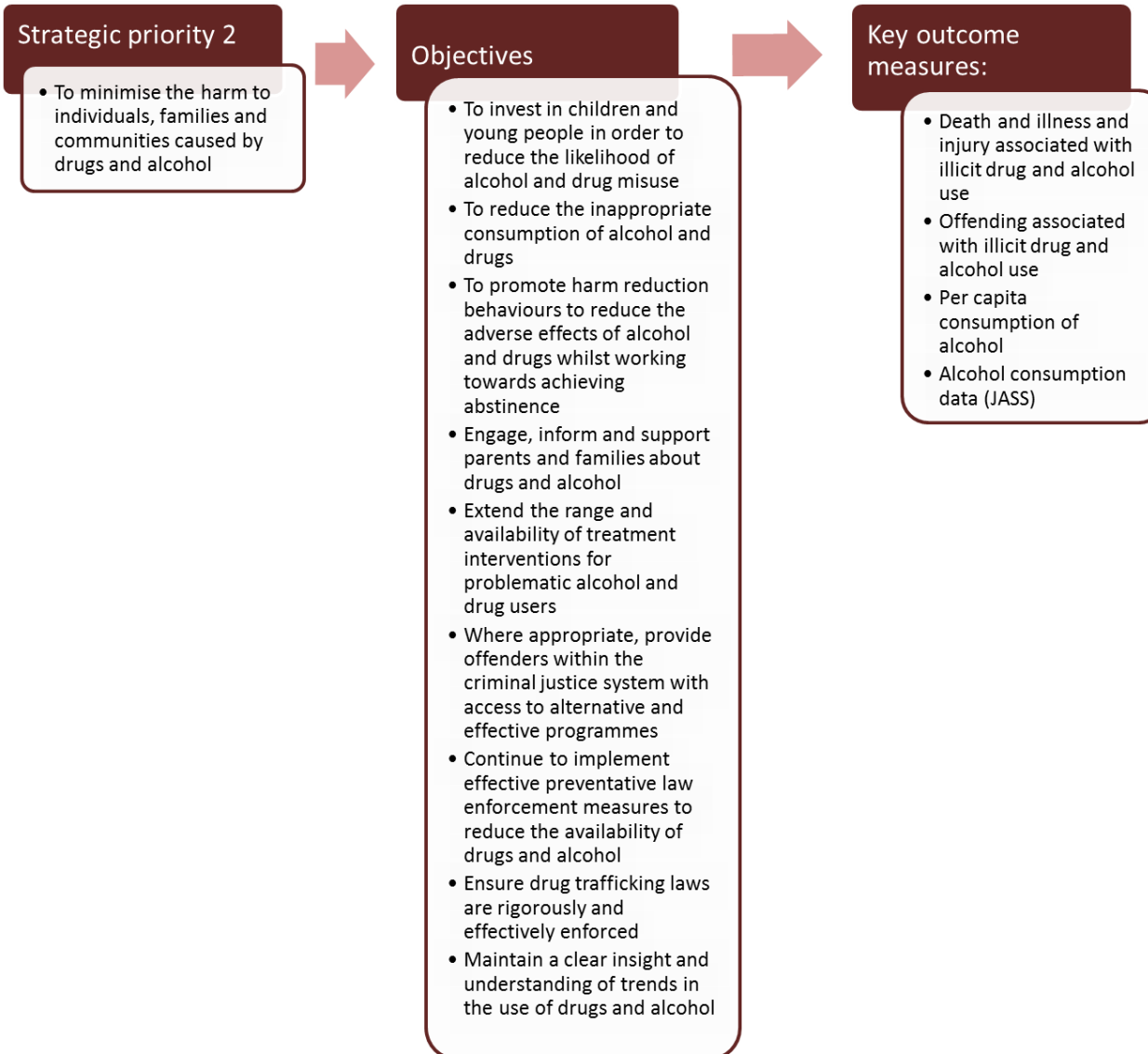
Operational delivery	Lead
✓ Continue to work with the Jersey Community Relations Trust and other not-for-profit organisations to engage and inform our various Jersey communities	CCA
✓ Support the development of same sex marriage legislation and the anti-discrimination law	CCA/SSD

### Build for the future

Service	Lead
➤ Support the development of a communication plan, and use of social media.	CMD
➤ Support for the new sustainable transport strategy in order to ensure ease of access as well as safety in the evening economy.	Department of Infrastructure
➤ Nurture the relationship with the parishes as a centre for social life in Jersey	CCA/Parishes

## Strategic priority 3

To minimise the harm to individuals, families and communities caused by drugs and alcohol



### Priority 3 Lead- H&SS (Alcohol and Drug Service)

Agencies:

Health & Social Services (H&SS) - Alcohol & Drug Service (ADS)  
Health and Social Services - Public Health  
Jersey Customs & Immigration Service (JCIS)  
States of Jersey Police (SoJP)  
Honorary Police  
Jersey Probation and Aftercare Service (JPACS)  
States of Jersey Prison Service (SoJPS)  
Department of Education (DofE)  
Youth Service  
Economic Development, Tourism, Sport and Culture (EDTSC)-  
Sport  
Voluntary Agencies  
Hospital Doctors and General Practitioners  
Community and Constitutional Affairs (CCA)

#### Introduction

This part of the strategy sets out how the States of Jersey will work together with the community to address harms caused by the misuse of alcohol and drugs.

Most people in Jersey drink alcohol in a way that is both responsible and enjoyable, and the retail, hospitality and tourism industries that supply alcohol are an important component of Jersey's social life and economy. But misuse of alcohol and drugs affects our individual health, families, the economy, and the criminal justice system. Many of the issues the SoJP have with hotspots, offenders, criminal and ASB is linked to alcohol and drugs and many of the problems for staff at accident departments are caused

by misuse of alcohol and drugs, in addition to the long term health impact that substance misuse has.

Drug patterns of use in Jersey appear to have changed over the past five years. The recent report from the Centre for Drug Misuse Research<sup>6</sup> found drugs such as heroin, cocaine and cannabis continue to be a problem while New Psychoactive Substances (NPS or so called 'legal highs' often facilitated by access through the internet), have become a new and evolving feature of the local drug scene. Access to diverted prescription drugs remains a worrying concern.

**This strategy supports the focused and more detailed actions emanating from the new Alcohol and Licensing Strategy as well as (following the recommendations from the Drug research) the future development of a co-ordinated and integrated response for tackling the drugs problem in Jersey with the establishment of a dedicated multi-agency sub-group with executive responsibilities, in the form of a Drug and Alcohol Action Team (DAAT)**

**One of the functions of a DAAT will be to oversee the strategic direction of the substance misuse priority and ensure its objectives are met, including the formation of a service provider's forum.**

---

<sup>6</sup> McKeganey, N., Russell, C., Barnard, M., McGallagly, J., Bain, C., and Barclay-Hamilton, T. (2015). The Nature, Extent, Impact, and Response to Illicit Drug Use in Jersey, Centre for Drug Misuse Research, Glasgow.

## Objective 1: To invest in children and young people in order to reduce the likelihood of alcohol and drug misuse.

There is widespread concern about the use of substances by young people in Jersey and in particular the use of NPS.

Certain groups of young people are more susceptible to the use of legal and illegal drugs. Research shows that children in care, school truants, those who are excluded and those who use alcohol or so called 'legal highs' from an early age, are more likely to progress on to the use of illegal substances. (It should be noted, however, that only a small percentage go on to develop substance misuse problems).

Recent findings from the Young People's Health and Lifestyle survey, 2014 show the majority of 12-13 year olds have never drunk alcohol (52%). By 14-15 years old, most students have drunk alcohol (only 20% reported having never drunk it), mostly only a few times or on special occasions. Drug taking before the age of 14 years is uncommon (1% of 10-13 year olds). 17% of 14-15 year olds reported having taken drugs.

In most circumstances, most effective ways of reducing the harm caused by drugs and alcohol is to develop effective and evidence-based drug and alcohol programmes that target risk and protective factors at the individual, family, and/or community levels as well as increasing the opportunities for young problematic drug users to access treatment and support.

However, the problems associated with the use of NPS are not those that are typically associated with longer term illegal drug use, but have to do with the unknown impact of the chemicals involved. What may well be needed is integrated evidence-based educational/preventive approach in schools and raising awareness in the wider community. Approaches need to focus both on risk based learning that reduces the up-take of substance misuse as well as including targeted programs using brief interventions, harm reduction approaches and referral pathways to known at risk groups. The extent to which a young person feels resilient or marginalised will influence their decision making whether to use NPS.

### Delivery of key services

Operational delivery	Lead
<p>✓ Continue supporting the Young People's Health and Lifestyle survey conducted by H&amp;SS in partnership with Education. This survey has provided excellent longitudinal information and is used to inform evidence based practices in many departments.</p>	<p>H&amp;SS</p>
<p>✓ Initiatives designed to invest in young people will build resilience and mitigate the risks of becoming involved with substance misuse. Initiatives like: investing in allowing children access to mainstream nurseries, the work of the Bridge, charities like Brighter Futures and Love Matters, the Youth Enquiry Service (including the counselling service they offer), the Youth Inclusion Project and the Street Based Youth work.</p>	<p>MAP</p>

✓ Partnerships with PMNW to help deliver substance misuse messages to schools and wider community are part of the broader activities	PMNW/MAP
✓ Evidence has shown that substance misuse education for young people on probation orders and those in La Moye prison together with work done by the Court Liaison Officer between JPACS and ADS help reduce the likelihood of future substance misuse. Work needs to continue developing the role of arrest referral.	JPACS/ADS
✓ H&SS together with DofE work to develop evidence based programmes and PSHE delivery for young people that provide the knowledge attitudes and skills that enable healthier lifestyles and can prevent and reduce alcohol and drugs related harm.	H&SS
✓ Young person's drug and alcohol worker to engage with young people at risk and provide support to carers, families and children of substance misusers	ADS
✓ Continue to support the development of child and family centres	MAP
✓ Support the 1001 Critical Days agenda for Jersey- The first few years of a child's life are fundamentally important. Evidence tells us that they shape children's future development.	CCA/CMD

## Build for the future

Service	Lead
➤ Support the development and ongoing operation of strategies that help to address substance misuse like the Alcohol and Licensing Strategy, the 1001 critical days,	DAAT/CCA
➤ Support the development of and wider use of social media as a means of communicating key messages to young people, including development of PMNW website with links to relevant sites, Exploring web-based ideas for interventions	DAAT
➤ Support the provision of training in NPS and other drugs for school staff and other workers supporting young people and actively work to engage schools in this agenda.	DAAT
➤ Investigate all ways to engage with young people who are most at risk with the aim of developing resilience	DAAT
➤ Develop a common pathway for counselling and support services to ensure timely access for school aged children.	H&SS
➤ Develop and implement mechanisms for early intervention, treatment and onward referral where appropriate for ➤ younger drug users aged 16-25	DAAT/ADS



## Objective 2: To reduce the inappropriate consumption of alcohol and drugs.

Overall levels of drug and alcohol consumption are associated with levels of harm. Correspondingly, an increase in consumption will lead to a rise in levels of harm. It is well recognised that the attainment of a drug-free society is not realistic and the development of pragmatic and sensible strategies are more achievable. The increase in the misuse of drugs and alcohol is regarded as a major public health problem that cannot be ignored. The health, social and economic problems associated with

addiction to both legal and illegal drugs present a great challenge to us all. As a relatively affluent society, Jersey remains an attractive target for drug dealers who are looking for new drug markets.

This strategy incorporates a number of treatment, prevention and law enforcement initiatives aimed at reducing the demand, supply and availability of illegal substances.

### Delivery of key services

Operational delivery	Lead
<ul style="list-style-type: none"> <li>✓ The Advisory Council on Misuse of Drugs (ACMD) recommends legislation which seeks to reduce harm caused in the Island and aim to provide a quick response to new drugs. It is a multi-agency body which includes the Attorney General and the Medical Officer of Health and representatives from the SoJP, JCIS, ADS, and others.</li> </ul>	ACMD
<ul style="list-style-type: none"> <li>✓ Brief interventions are evidence-based practices designed to motivate individuals at risk of substance abuse and related health problems to change their behaviour. For example an alcohol intervention is typically targeted to non-dependent drinkers whose drinking may still be harmful. Training has been given to health care professionals and has proved very worthwhile</li> </ul>	H&SS
<ul style="list-style-type: none"> <li>✓ The work of the Court Liaison Officer at JPACS/ADS to deliver substance misuse education and other programmes has had some great results, the majority of people reduce their substance related problems</li> </ul>	JPACS/ADS
<ul style="list-style-type: none"> <li>✓ The ADS deliver opiate substitute programmes which aim to reduce the harm caused by opiate substances.</li> </ul>	ADS
<ul style="list-style-type: none"> <li>✓ The SoJPS deliver accredited programmes designed to reduce the consumption of drugs and alcohol abuse</li> </ul>	SoJPS

## Build for the future

Service	Lead
➤ Support the Implementation of the Alcohol and Licensing Strategy and other departmental drug strategies	DAAT
➤ Develop a shared care scheme with participating GPs to increase access to treatment (particularly the younger age group) and investigate the need to better integrate the provision of the community based treatment services with the residential provision on the Island.	DAAT
➤ Monitor GP prescribing	SSD
➤ Initiatives to address internet supply of substances	DAAT
➤ Reduce the inappropriate supply of prescription drugs including DF118, Tramadol, benzodiazepines, Fentanyl, oxycodone and gabapentin and the number of deaths and adverse health consequences from the use of prescription drugs	DAAT

### Objective 3: To promote harm reduction behaviours to reduce the adverse effects of alcohol and drugs whilst working towards achieving abstinence.

This part of the strategy promotes both preventative and supportive measures. It is hoped that by promoting and educating people about a healthier lifestyle they will be less likely to misuse substances. There needs to be equity of access to information and facilities to help all members of society feel socially included and valued.

The strategy focuses on society as a whole, but will specifically target those 'at-risk' or who are more vulnerable members within the community. For those who develop problems as a result of previous substance misuse, the strategy aims to support them through education and health awareness initiatives.

#### Delivery of key services

Operational delivery	Lead
✓ The work of the Health Improvement Officers, Specialist Hepatitis Nurse and Specialist Alcohol Liaison Nurse have all contributed greatly to reducing the harms experienced by people as a result of the misuse of alcohol and/or drugs.	H&SS
✓ The ADS offers programmes to reduce opiate intake as well as a needle exchange scheme which aims to reduce the health risks that follow when needles are shared amongst people. These risks include blood born viruses like Hepatitis C which pose on-going potential health risks to our whole population.	ADS

#### Build for the future

Service	Lead
➤ Improve the delivery of evidenced based/age appropriate drugs education and ensure substance use policies are in place in all schools, develop/update local drug education resources and Introduce workplace drug and alcohol policies in every States department.	DAAT
➤ Recruit GPs to prescribe for drug users	ADS/DAAT

➤ Consider conducting prevalence research of HIV, Hepatitis C (HCV) and Hepatitis B and investigate the possibility of expanding HCV optimal treatment beyond those who are currently unwell in order to minimise future spread of HCV.	DAAT/H&SS
➤ Work with voluntary and community sector like Silkworth Lodge (to expand and enhance its role in the community) and PMNW work with young people and parents.	DAAT
➤ Consider expanding existing needle syringe provision to address increased injection rates for users of performance enhancing drugs i.e. steroid users, New Psychoactive Substances (NPS) to reduce transmission of Blood Borne Viruses (BBVs) and investigate the need for a location for needle/syringe exchange staffed by dedicated and appropriately trained staff who could access additional treatment as needed.	DAAT/ADS/H&SS
➤ Recognise the increased risk of suicide alongside alcohol and drug misuse and work to mitigate this risk.	H&SS
➤ Implement comprehensive drug training programmes for health and social care professionals in order to intervene with drug related problems at an early stage rather than a specialist homogenous approach	DAAT
➤ Investigate the possibility of providing contraceptive support to those accessing treatment as female drug users have a higher than average rate of unplanned pregnancies. Many are unable to afford the costs of contraception services.	ADS

## Objective 4: Engage, inform and support parents and families about drugs and alcohol.

Parents who use drugs can, and do, cause serious harm to children of every age from conception to adulthood. Preventing the harm caused to children should be a key focus of this strategy. The Health Related Behaviour Questionnaire 2014 suggests parents or carers are the second main source of information about drugs after

drug education lessons for 12-13 year olds whilst for 14-15 year olds more often reported friends and the internet as their main source of information. It is, therefore, essential that parents are properly equipped to respond to the wide-ranging challenges and questions that their children's substance use may raise.

### Delivery of key services

Operational delivery	Lead
✓ The leaflet 'A parent's guide to drugs' has been updated to include information about NPS	H&SS
✓ Parenting programmes at The Bridge encourage parents to communicate and discuss issues around alcohol and drugs with their teenagers. They will signpost parents to relevant agencies for support.	ED/The Bridge
✓ PMNW has developed specific information in various languages aimed at parents. They run roadshows through schools. They also encourage parents to use their own knowledge to engage and inform other parents.	PMNW/MAP
✓ Silkworth Lodge is the only residential rehabilitation treatment centre in the Channel Islands. It is a non-profit organisation, owned and administered by The Families in Recovery Trust, to support those with drug and alcohol dependency, together with their families. They work in partnership with the ADS and other agencies and provide initiatives which aim to inform and support parents and carers.	MAP/Silkworth Lodge

### Build for the future

Service	Lead
➤ Support the establishment of a local parents' support group for substance misusers as well as access for parents to education about the internet.	DAAT
➤ Investigate the need to train family support workers in alcohol and drug issues and how to support young people who get into difficulty with these substances, including NPS.	DAAT

## Objective 5: Extend the range and availability of treatment interventions for problematic alcohol and drug users.

People with drug dependence are all different, and there is no 'one size fits all' solution for tackling individuals' addiction issues. It is, therefore, necessary to provide people with as many best practice and evidence-based treatment opportunities, in as many forms and places, as possible. It is well known that problematic drug users make above average demands on services, which provides many agencies with opportunities to intervene. It is, therefore, essential that all professionals in contact with these users are adequately equipped, in terms of training, skills and confidence, to deal with them or to refer them on to another service as appropriate. With the recent growth in NPS use, we also need to ensure that the focus moves beyond those that may be defined more traditionally as problematic drug users.

### Delivery of key services

Operational delivery	Lead
✓ The ADS and other areas of H&SS offer a range of services to try to meet varied need. These include opiate substitute programmes, needle exchange programmes, drug and alcohol awareness programmes, pregnant drug users protocols, counselling, overdose prevention training, onsite vaccination programme for HBV, Specialist Hepatitis Nurse and Specialist Alcohol Nurse.	H&SS/ADS
✓ Supported accommodation is provided in partnership with housing providers to help prepare and re-integrate into the community.	Housing providers
✓ The SoJPS provides programmes for those with drug issues and pre-release work. Freedom For Life (FFLM) also provide resettlement programmes for ex-prisoner alcohol and drug users	JPS/FFL

### Build for the future

Service	Lead
➤ Investigate the possibility of increasing the provision of drug treatment and interventions in the Jersey Prison Service in line with available community options which include providing harm reduction advice and individual drugs counselling.	DAAT

➤ Develop a process to ensure community based treatment services are notified when a drug user is released from prison.	DAAT
➤ Develop shared care prescribing responses via Primary Care to increase treatment access for drug users who are unwilling or inappropriate for specialist services	DAAT
➤ Investigate the provision of support to individuals through online contact	DAAT
➤ Expand and build upon the arrest referral provision	DAAT/ADS

## Objective 6: Where appropriate, provide offenders within the criminal justice system with access to alternative and effective programmes.

Recent partnership working between agencies such as Probation, Prison, Police and Alcohol and Drugs has illustrated the value of intervention programmes for offenders. In order to break the cycle of crime, certain offenders need opportunities to address their dependency issues. The strategy recognises appropriate targets as the 'victims' of addiction, rather than the profiteers.

The Arrest Referral Worker and Court Liaison Officer are key links between treatment services and the Criminal Justice System; they provide opportunities to divert offenders with substance misuse problems into treatment.

### Delivery of key services

Operational delivery	Lead
✓ JPACS together with ADS and the Jersey prison service provide drug and alcohol awareness programmes, specialist drug and alcohol reports for the courts, prison education programmes, opiate substitute programmes and drug and alcohol treatment orders which have proven to be effective in addressing dependency issues.	JPACS/ADS/ SoJPS

### Build for the future

Service	Lead
➤ Maximise the use of community based options with clear and consistent pathways for diverting drug using offenders (excluding those convicted of drug dealing) into education and/or treatment	DAAT
➤ Strengthen a consistent and co-ordinated approach to drugs/alcohol counselling and prescribing (in addition to offending programmes) between the JPS and community services.	DAAT
➤ Establish the need for a Custody Liaison Nurse to act as a bridge between CJS and Health Services.	DAAT
➤ Expand the role of the arrest referral worker	DAAT



## Objective 7: Continue to implement effective preventative law enforcement measures to reduce the availability of drugs and alcohol.

Law enforcement has a critical and increasingly diverse role to play in pursuing this objective by protecting both individuals and the wider community from the harm associated with the consumption of licit and illicit drugs.

Law enforcement has often been viewed as an alternative to health-based policies addressing drug related harm. However, evidence suggests that it is a multifaceted, partnership approach which recognises and utilises the mandates and competencies of all stakeholders that is likely to be most effective in minimising harm

### Delivery of key services

Operational delivery	Lead
<p>✓ The Open General Import and Export Licence is in place to control the import and export of all goods to and from the Island. It prevents any goods from being imported/exported that do not have the requisite licence. In terms of substances of misuse, on the recommendation of the ACMD, it allows the Head the JCIS to restrict the import (and export) of substances that have the potential to cause harm. This restriction only applies to the movement of a named substance in and out of the Island i.e. it does not address any possession instances and is a temporary measure until the substance has completed the process of being controlled via the Misuse of Drugs (Jersey) Law 1978.</p>	JCIS
<p>✓ JCIS have also used their power to remove items from the postal service with an improper declaration. This is not a long term fix, however, provides a valuable, powerful , and lawful method of removing an item that falls outside of the above pieces of legislation but may cause harm should the recipient receive it.</p>	JCIS
<p>✓ The Advisory Council on Misuse of Drugs meets regularly and provides prompt classification of all new drugs.</p>	ACMD
<p>✓ Intelligence-led policing has resulted in many seizures together with collaboration with JCIS</p>	SoJP/JCIS

## Build for the future

Service	Lead
<ul style="list-style-type: none"> <li>➤ Support the sub-group of the ACMD who are working on a paper to assess the UK Psychoactive Substances Bill. This Bill has the potential a make it an offence to produce, supply, offer to supply, possess with intent to supply, import or export psychoactive substances; that is, any substance intended for human consumption that is capable of producing a psychoactive effect. It will also exclude legitimate substances, such as food, alcohol, tobacco, nicotine, caffeine and medical products, from the scope of the offence, as well as controlled drugs, which will continue to be regulated by the MODL</li> </ul>	ACMD
<ul style="list-style-type: none"> <li>➤ Further measures to control the supply of drugs into prison,</li> </ul>	DAAT
<ul style="list-style-type: none"> <li>➤ Support the monitoring of drugs websites</li> </ul>	DAAT

## Objective 8: Ensure drug trafficking laws are rigorously and effectively enforced.

Illegitimate access to both legal and illegal drugs needs to be curtailed in order to reduce consumption and harm. Jersey remains an attractive target for drug dealers. SoJP and JCIS intelligence and operational capabilities will continue to target the principals behind drug importation and supply syndicates with a particular emphasis on Class A drugs and the illegal New Psychoactive

Substances. The Joint Financial Crime Unit will investigate the financial affairs of individuals prosecuted for drug trafficking offences so as to ensure that they do not benefit from the proceeds of their drug trafficking. We must continue to capitalise upon opportunities of sharing of intelligence and joint operational working with other agencies and jurisdictions.

### Delivery of key services

Operational delivery	Lead
✓ Joint intelligence working with the SoJP, JCIS, French and UK authorities has been very successful in helping to disrupt drug supply lines. This has also included joint training with SoJP and JCIS and joint working between SoJP and JCIS Intelligence and Operational teams	MAP
✓ Use National Intelligence Model to implement intelligence-led operations against drug traffickers	JCIS
✓ The use of the JCIS Drugs free phone line to enable members of the public to call and report any suspicious drug activity.	JCIS

### Build for the future

Service	Lead
➤ Improved processes for sharing experience and intelligence between agencies involved in financial investigation.	SoJP

## Objective 9: Maintain a clear insight and understanding of trends in the use of drugs and alcohol.

Up-to-date information on the availability and prevalence of illegal drugs and the criminal, health, and social consequences of their use is vital to the implementation of any drug strategy. Such information is also important for measuring the effectiveness of substance misuse initiatives.

The compilation of data from a wide array of information systems helps us to provide a reference regarding what we know about the drug problem. We continue to place a high priority on strengthening these information systems to support the formulation and assessment of policies and programs to reduce drug use and its consequences.

### Delivery of key services

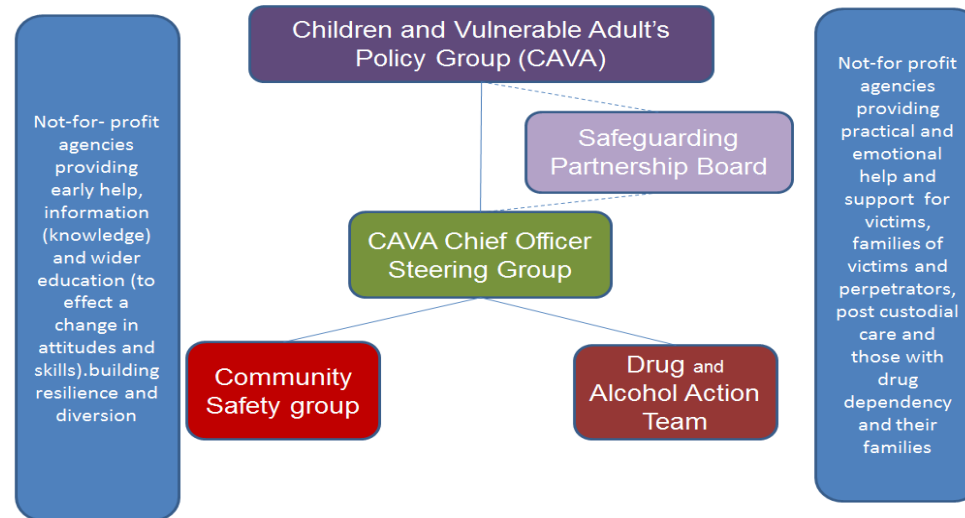
Operational delivery	Lead
✓ The co-ordination and monitoring of data from various services during the last 10 years has provided a valuable long term picture	CCA
✓ Up-to-date research into the 'Nature, Extent, Impact, and Response to Illicit Drug Use in Jersey' has enabled an evidence based strategy to be formulated and recommendations for the future to be taken forward	CCA/ADS

### Build for the future

Service	Lead
➤ Ensure ongoing analysis of activity, research, and intelligence data to monitor drug and alcohol trends, including routine collection of illicit drug use and sharing of data from all agencies on types and prevalence as well as offending and morbidity statistics.	DAAT
➤ Investigate the possibility of developing a centralised database to monitor drug and alcohol use including indicators to measure harm caused by illegal drugs e.g. overdoses, drug related deaths, prevalence of BBVs and A/E presentations	DAAT
➤ Conduct ongoing research in light of changing patterns of drug use to update the strategy and effectiveness of interventions.	DAAT

➤ Review and up-date substance use questions in Young People’s Health and Lifestyle Survey to reflect changing drug use patterns and extend coverage of survey to include higher education and sixth form.	DAAT
➤ an identified person to oversee the drug strategy in order to ensure the strategic aims/objectives are being implemented and achieved	DAAT

## Governance



Governance of the strategy will be provided through the Children and Vulnerable Adults (CAVA) Policy group. Members of this group are:

- Minister for Home Affairs
- Minister for Health and Social Services
- Minister for Education
- Minister for Social Security
- Minister Housing
- Assistant Chief Minister (Social Policy)

The CAVA Chief Officers group will be responsible for strategy.

A BaSS Community Safety Group will be responsible for co-ordinating the various developments of community safety actions.

A newly formed Drug and Alcohol Action team will be responsible for the development of a co-ordinated and integrated response for tackling the drugs and alcohol issues in Jersey. A chair will be nominated to take developments through to CAVA.

A substance misuse service providers' forum will help to facilitate greater engagement and joint working at an operational level.

BaSS strategy working together in partnership with various States departments including, SSD, DoFE, H&SS (particularly ADS and Public Health) and:

