

# **STATES OF JERSEY**



## **ROYAL COURT HOUSE/STATES BUILDING: ALLOCATION OF ACCOMMODATION**

---

**Lodged au Greffe on 20th April 2004  
by the Environment and Public Services Committee**

---

**STATES GREFFE**

## PROPOSITION

### THE STATES are asked to decide whether they are of opinion –

to refer to their Act dated 19th July 2000, in which they approved drawing Nos. 2980/13, 21(A), 22(A), 24(A), 25(A) 101(C), 102(L), 103(B), 104(A), 105(B), 200, 201(D), 202(F), 300(A) showing Phase One and Phase Two of the proposed refurbishment of the Royal Court/States Building excepting that the proposed usage and allocation of space described with the drawings should not be fixed until the needs of the legislature could be assessed in the light of the recommendations of the Review of the Machinery of Government, and –

- (a) to authorise the use and allocation of the Royal Court/States Building as set out in Drawing Nos. 2980:130/131/132/133/134;
- (b) to authorise the Greffier of the States to sign the said drawings on behalf of the States;
- (c) to agree that the second floor “Open Plan Office” be occupied by the Shadow Scrutiny panels until the introduction of Ministerial Government, at which time the use can be reassessed in line with the developing needs of the legislature.

### ENVIRONMENT AND PUBLIC SERVICES COMMITTEE

- Notes: 1. Finance and Economics Committee comment  
In the event that growth funding is not secured through the 2005 Fundamental Spending Review, the Privileges and Procedures Committee and the Finance and Economics Committee will be required to fund the maintenance costs of the refurbished Royal Court and States Building from within their existing cash limit.
2. The Privileges and Procedures Committee’s comments are to follow.

## REPORT

The States at their meeting of 19th July 2000, adopted proposition P.119/2000, as amended, of the Environment and Public Services Committee approving the drawings showing Phase One and Two of the proposed refurbishment of the Royal Court/States Building. The amendment of Senator Stuart Syvret reads as follows –

*“excepting that the proposed usage and allocation of space described with the drawings shall not be fixed until the needs of the legislature can be assessed in the light of the recommendations of the Review of the Machinery of Government...”*

The proposed usage and allocation of the building is set out in the new drawings and has been reviewed by the Royal Court/States Building User Group, comprising officer representation of the Judicial Greffe, Bailiff’s Chambers, the Privileges and Procedures Committee (on behalf of the States Members) as occupants of the building together with the Environment and Public Services Committee as Landlord. Although the Privileges and Procedures Committee has raised objection to the re allocation of the ground floor Members lounge for the use of the Jurats the Environment and Public Services Committee has concluded that the proposed allocation and use of accommodation as set out in drawing Nos. 2980:130/131/132/133/134 meets the needs of all users without compromising on the key services delivered by the individual departments concerned.

Members will recall that the Privileges and Procedures Committee conducted an in-depth consultation process with all States members prior to the official publication of its First Report dated 22nd October 2002, which is attached at the Appendix. This has formed the basis of the proposed facilities for States Members.

The Privileges and Procedures Committee established a Consultation Group to ensure that the needs of the legislature were being met; this group was made up of a Senator, Deputy and Connétable therefore all seats of the Assembly were represented in order to provide a balanced mix of views.

At their meeting of 24th July 2003 the States adopted P.79/2003 in which they approved the formation of Shadow Scrutiny Panels which were to be supported by a small number of seconded Civil Servants. It is recommended that the second floor “Open Plan Office” (as illustrated on Drawing No.2980:133) be used temporarily to accommodate the Shadow Scrutiny function after which time the needs of future Scrutiny Panels will be reviewed and accommodated within the Office Strategy managed by the Department of Property Services. After consultation with Officers reporting to the Privileges and Procedures Committee, it was felt that it was important to retain the long term occupancy of this area in order to accommodate the future needs of the Legislature once they are reassessed in line with the introduction of Ministerial Government.

There are no manpower or further financial implications for the States arising from this proposition.

## MEMBERS' RESPONSE TO CONSULTATION ON FACILITIES

Privileges and Procedures Committee - Members' facilities questionnaireSUMMARY

Member responses to date (29.07.02): 36

Don't want facilities	4
Use on States day only	14
Use once/twice a week	14
Use as principal office	4
	<b>36</b>

	<u>Disagree</u>	<u>More disagree</u>	<u>No view</u>	<u>More agree</u>	<u>Agree/ priority</u>	<u>Total members</u>
Common room	5		11	7	12	<b>35</b>
Library/research room	4	1	3	5	22	<b>35</b>
Interview rooms (3)	8	3	5	6	13	<b>35</b>
Interview rooms (2)+smoking room	16	3	8	1	7	<b>35</b>
Kitchen/toilets	3		4	10	18	<b>35</b>
Office	9	2	9	7	8	<b>35</b>
Reception area	8		11	10	6	<b>35</b>
Workstation	5	4	3	9	14	<b>35</b>
Lockers	10	3	8	6	8	<b>35</b>
Computer stations	6	2	8	3	16	<b>35</b>
Telephone	2	2		3	28	<b>35</b>
Fax	2	2		6	25	<b>35</b>
Photocopier	3	1	1	3	27	<b>35</b>
Filing cabinets/storage	8	5	10	3	9	<b>35</b>
<b>Total (Points)</b>	<b>89</b>	<b>28</b>	<b>81</b>	<b>79</b>	<b>213</b>	

High Priority orderLow Priority order

28 - Telephone	16 - Interview/smoking
27 - Photocopier	10 - Lockers
25 - Fax	9 - Office
22 - Library/research	8 - Reception area
18 - Kitchen/toilets	8 - Interview rooms
16 - Computer stations	8 - Filing cabinets
14 - Work stations	6 - Computer stations
13 - interview rooms	5 - Common room
12 - Common room	5 - Workstations
9 - Filing Cabinet	4 - Library/Research
8 - Lockers	3 - Kitchen/Toilets
8 - Office	3 - Photocopier
6 - Interview/smoking	2 - Telephone
6 - Reception	2 - Fax

**Privileges and Procedures Committee - Members' facilities questionnaire**

**SENATORS**

Senator responses to date (29.07.02): 8

Don't want facilities	1
Use on States day only	2
Use once/twice a week	5
Use as principal office	
	<b>8</b>

	<u>Disagree</u>	<u>More disagree</u>	<u>No view</u>	<u>More agree</u>	<u>Agree/ priority</u>	<u>Total members</u>
Common room	1		3	2	2	<b>8</b>
Library/research room		1	1	1	5	<b>8</b>
Interview rooms (3)	1		1	2	4	<b>8</b>
Interview rooms (2)+smoking room	3	2	1		2	<b>8</b>
Kitchen/toilets			1	3	4	<b>8</b>
Office		1	5		2	<b>8</b>
Reception area	1		4	3		<b>8</b>
Workstation		1		3	4	<b>8</b>
Lockers	3	1	2	1	1	<b>8</b>
Computer stations		1	1		6	<b>8</b>
Telephone		1			7	<b>8</b>
Fax		1			7	<b>8</b>
Photocopier	1				7	<b>8</b>
Filing cabinets/storage		2	5	1		<b>8</b>
<b>Total (Points)</b>	<b>10</b>	<b>11</b>	<b>24</b>	<b>16</b>	<b>51</b>	

<u>High Priority order</u>	<u>Low Priority order</u>
7 - Telephone	3 - Lockers
7 - Fax	3 - Interview/smoking rms.
7 - Photocopier	1 - Common room
6 - Computer stations	1 - Interview rooms
5 - Library/research	1 - Reception area
4 - Interview rooms	1 - Photocopier
4 - Kitchen/toilets	0 - Library/research
4 - workstation	0 - kitchen/toilets
2 - Office	0 - Office
2 - Interview/smoking rms.	0 - workstation
2 - Common Room	0 - computer station
1 - lockers	0 - telephone
0 - filing cabinets	0 - fax
0 - reception area	0 - filing cabinets

**Privileges and Procedures Committee - Members' facilities questionnaire**

**CONSTABLES**

Constable responses to date (29.07.02): 7 - see notes below

Don't want facilities	2
Use on States day only	4
Use once/twice a week	1
Use as principal office	
	<u>7</u>

	<u>Disagree</u>	<u>More disagree</u>	<u>No view</u>	<u>More agree</u>	<u>Agree/ priority</u>	<u>Total members</u>
Common room	1		1		4	6
Library/research room	1			2	3	6
Interview rooms (3)	1	1	3		1	6
Interview rooms (2)+smoking room	2	1	2	1		6
Kitchen/toilets			1		5	6
Office	2		1	2	1	6
Reception area	1		4		1	6
Workstation	1	1	2		2	6
Lockers	1		2	1	2	6
Computer stations	1		4		1	6
Telephone				1	5	6
Fax				2	4	6
Photocopier			1	1	4	6
Filing cabinets/storage	2	1	2		1	6
<b>Total (Points)</b>	<b>13</b>	<b>4</b>	<b>23</b>	<b>10</b>	<b>34</b>	

<u>High Priority order</u>	<u>Low Priority order</u>
5 - Kitchen/toilets	2 - Interview/smoking rms.
5 - telephone	2 - Office
4 - Common Room	2 - Filing
4 - Fax	1 - Lockers
4 - photocopier	1 - Common room
3 - Library/research	1 - Library/research room
2 - Lockers	1 - Interview rooms (3)
2 - Work station	1 - Computer stations
1 - Office	1 - Reception area
1 - Reception area	1 - Workstation
1 - Interview rooms	0 - Kitchen/toilets
1 - Computer station	0 - Telephone
1 - Filing	0 - Fax
0 - Interview/smoking rms.	0 - Photocopier



**Privileges and Procedures Committee - Members' facilities questionnaire**  
**DEPUTIES**

Deputy responses to date (29.07.02): 21

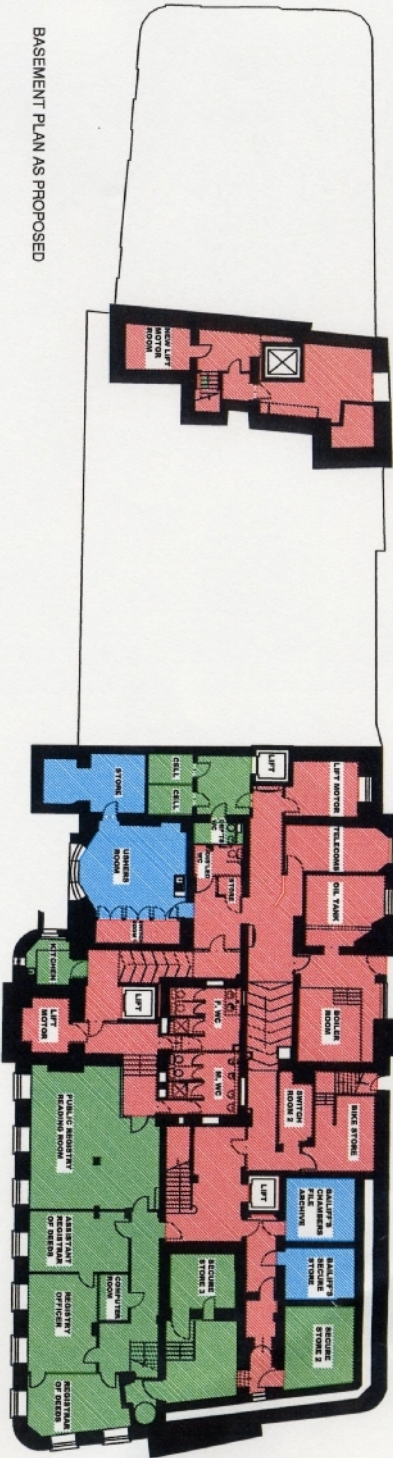
Don't want facilities	
Use on States day only	8
Use once/twice a week	9
Use as principal office	4
	<b>21</b>

	<u>Disagree</u>	<u>More disagree</u>	<u>No view</u>	<u>More agree</u>	<u>Agree/priority</u>	<u>Total members</u>
Common room			8	5	8	<b>21</b>
Library/research room	2		2	2	15	<b>21</b>
Interview rooms (3)	3	2	2	4	10	<b>21</b>
Interview rooms (2)+smoking room	8		8		5	<b>21</b>
Kitchen/toilets	1		2	7	11	<b>21</b>
Office	3	1	8	5	4	<b>21</b>
Reception area	2		8	7	4	<b>21</b>
Workstation	3	2	1	6	9	<b>21</b>
Lockers	4	2	5	4	6	<b>21</b>
Computer stations	4	1	3	3	10	<b>21</b>
Telephone	1	1		3	16	<b>21</b>
Fax	1	1		4	15	<b>21</b>
Photocopier	1	1		2	17	<b>21</b>
Filing cabinets/storage	5	2	3	3	8	<b>21</b>
<b>Total (Points)</b>	<b>38</b>	<b>13</b>	<b>50</b>	<b>55</b>	<b>138</b>	

<u>High Priority order</u>	<u>Low Priority order</u>
17 - Photocopier	8 - interview/smkg rm.
16 - Telephone	5 - Filing cabinets
15 - Fax	4 - Computer stations
15 - Library/research	4 - Lockers
11 - Kitchen/toilets	3 - Interview rooms
10 - interview rms.	3 - Workstation
10 - computer stations	3 - Office
9 - workstation	2 - Library/research
8 - common room	2 - reception area
8 - filing cabinet	1 - kitchen/toilets
6 - lockers	1 - Telephone
5 - interview/smkg rm.	1 - Fax
4 - office	1 - Photocopier
4 - reception area	0 - common room



BASEMENT PLAN AS PROPOSED

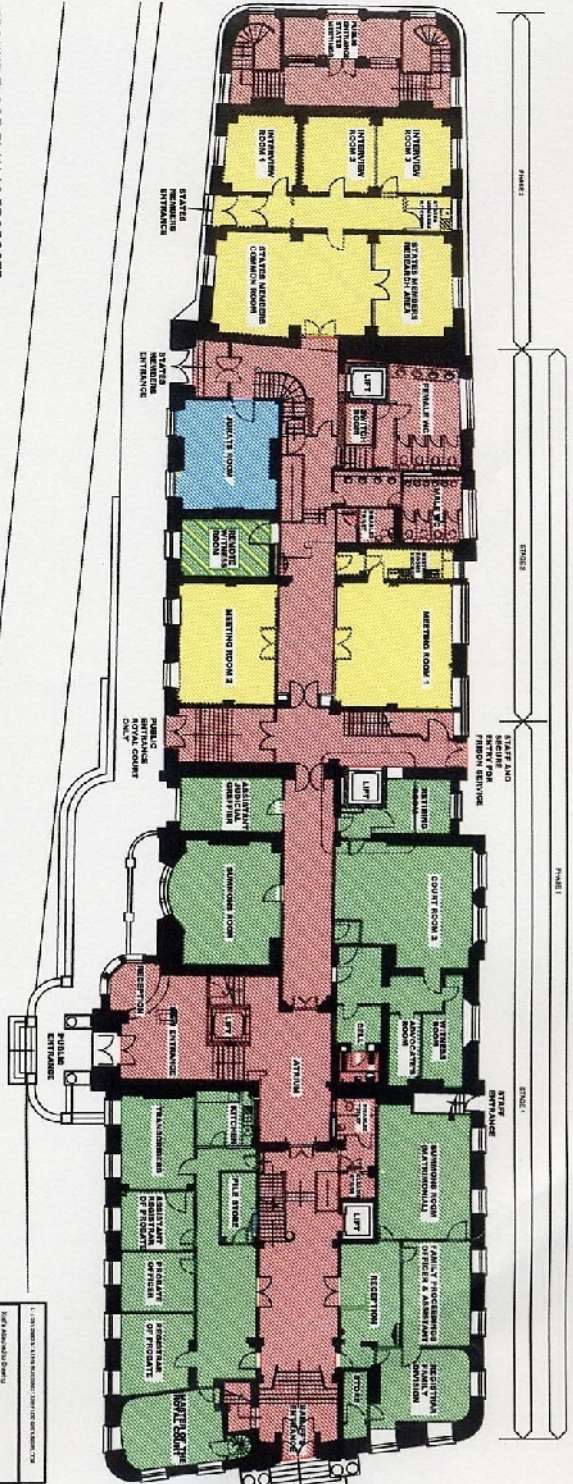


STAGE 1

Functional Area	Color	Area (sqm)	Percentage
STATE SERVICES FLOOR AREAS	Yellow	620,213	28%
COMMERCIAL FLOOR AREAS	Red	1,164,000	52%
JUDICIAL AREA	Green	1,940,371	87%
MALYA'S AREA	Blue	402,519	18%
RECORDS FLOOR AREA	Purple	280,739	13%

<b>PSd</b> PROJECTS & SERVICES DESIGN 10/100, BATHURST STREET, SYDNEY PH: 02 9383 7700 FAX: 02 9383 7701 WWW.PSDDESIGN.COM.AU		STATE OF NEW SOUTH WALES PUBLIC SERVICES COMMITTEE STATION BUILDING REPAIRS AND RENOVATIONS ROYAL SQUARE SYDNEY	
TITLE: BASEMENT PLAN AS PROPOSED DATE: 12/01/07 DRAWN: [Signature] CHECKED: [Signature]	SCALE: AS SHOWN DRAWING NUMBER: 2980-130	PROJECT NO. 2980-130 SHEET NO. 1 OF 1	DATE: 12/01/07

**GROUND FLOOR PLAN AS PROPOSED**



- OFFICE WORKING AREA
- JUDICIAL AREA
- COURT ROOMS
- WAITING AREA
- SHARED AREA
- STORAGE
- CONFERENCE AREA
- JUDICIAL AREA
- WAITING AREA
- SHARED AREA
- STORAGE

**PSd**  
 PUBLIC SERVICES COMMITTEE  
 STATES OF ILLINOIS  
 REQUISITION  
 STUDY  
 SQUARE  
 GROUND FLOOR PLAN  
 AS PROPOSED  
 SPACE ALLOCATION

**PSd**  
 STATES OF ILLINOIS  
 REQUISITION  
 STUDY  
 SQUARE  
 GROUND FLOOR PLAN  
 AS PROPOSED  
 SPACE ALLOCATION

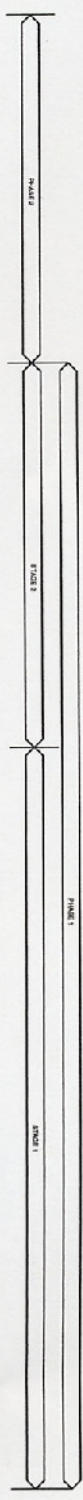
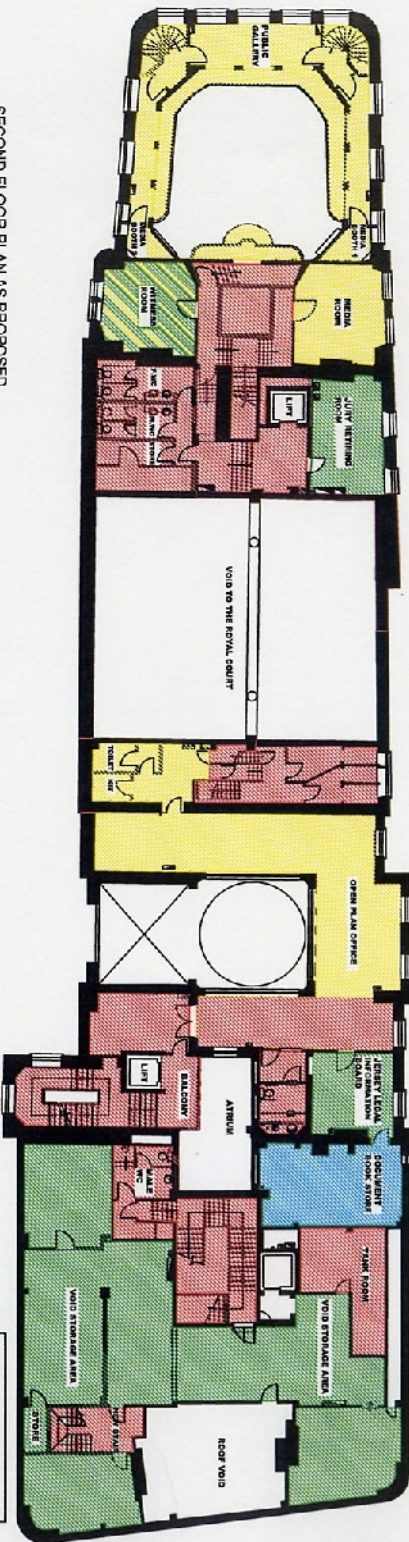
2990131



SECOND FLOOR PLAN AS PROPOSED



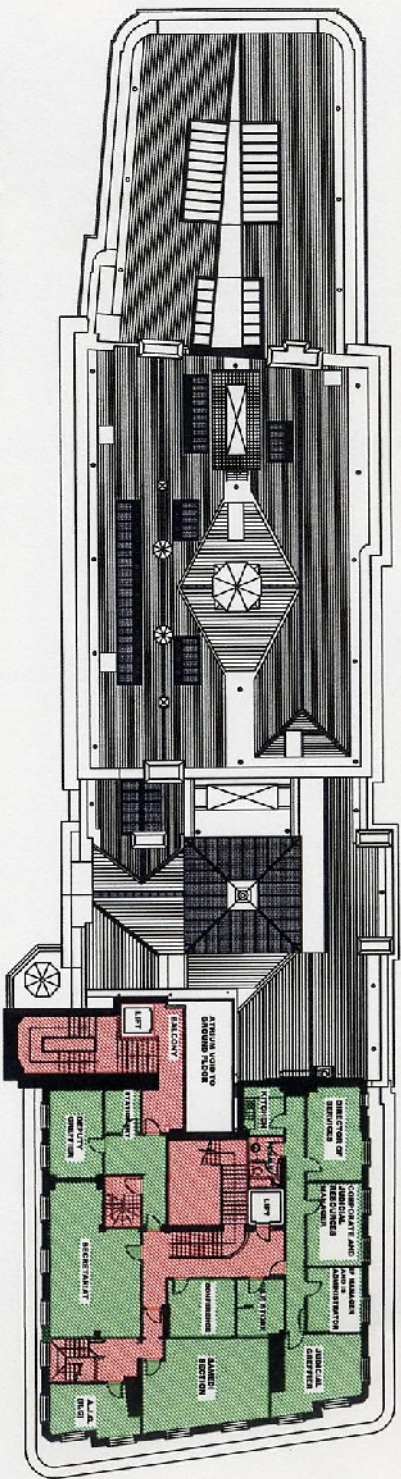
- STAFFS WARDENS AREA
- CONCOURSE AREA
- 2ND FLOOR AREA
- 3RD FLOOR AREA
- SHARED AREA
- STAFFS WARDENS AREA



L1018 IMPROVED BALCONY OFFICE RECONSTRUCTION  
 WORK ORDER NO. 1018000000  
 PROJECT NO. 1018000000  
 DRAWING NO. 1018000000  
 DATE: 10/10/2018  
 DRAWN BY: J. SMITH  
 CHECKED BY: J. SMITH  
 APPROVED BY: J. SMITH  
 PROJECT MANAGER: J. SMITH  
 ARCHITECT: J. SMITH  
 CONTRACTOR: J. SMITH  
 29901133

STATES BUILDING  
 REPAIRMENT  
 ROYAL SQUARE  
 STAFFELER  
 PUBLIC SERVICES COMMITTEE

STATES OF JERSEY ARCHITECTS  
 PSd



UPPER SECOND FLOOR AS PROPOSED



CORONAL AREA  
84,722 sq ft

JUDICIAL AREA  
29,048 sq ft

U.S. BANK FINANCIAL BUILDING 1007 WALNUT STREET  
 2ND FLOOR - 2ND CORNER

PHILADELPHIA, PENNSYLVANIA  
 ARCHITECTURAL AND ENGINEERING  
 1007 WALNUT STREET, 2ND FLOOR  
 PHILADELPHIA, PENNSYLVANIA 19106

PUBLIC SERVICES COMMITTEE

STATES BUILDING  
 REYNOLDS BUILDING  
 ROYAL SQUARE  
 PHILADELPHIA

UPPER SECOND FLOOR  
 AS PROPOSED  
 SPACE ALLOCATION

ENTERIES OF JENSEN ARCHITECTS  
 PAUL JENSEN ARCHITECTS  
 1007 WALNUT STREET, 2ND FLOOR  
 PHILADELPHIA, PENNSYLVANIA 19106

PSA

PHILADELPHIA ARCHITECTURAL SOCIETY  
 1007 WALNUT STREET, 2ND FLOOR  
 PHILADELPHIA, PENNSYLVANIA 19106

DATE: 2800:134