

# **STATES OF JERSEY**



## **JERSEY LABOUR MARKET AT JUNE 2005**

---

**Presented to the States on 11th October 2005  
by the Economic Development Committee**

---

**STATES GREFFE**

# JERSEY LABOUR MARKET AT JUNE 2005

## incorporating the private sector Manpower Survey and the public sector Manpower Report

This report consolidates information about employment and vacancies in Jersey at the end of June 2005, bringing together the results of the Manpower Survey (private sector)<sup>[1]</sup> and the Manpower Report (public sector)<sup>[2]</sup>.

### Headlines

The principal features of the Jersey Labour Market at June 2005 were<sup>[3]</sup>:

- **total employment was 52,910, which is 550 higher (1%) than in June 2004**, and compares to a fall of 100 in the previous 12-month period to December 2004;
- of the total employment: **46,420 (88%) were in the private sector** (including the States Trading Committees) **and 6,490 (12%) were in the public sector**;
- the **overall increase** in total employment in the 12 months to June 2005 was made up of **an increase of about 600 in the private sector and a decrease of 60 in the public sector**;
- the **increase of 1.3% in private sector employment** was the first for more than 2 years and the largest since December 1998; compared with June 2004, **full-time employment in the private sector** was up by 0.7% (260) and **part-time employment** was up by more than 4% (340);
- the **Finance sector** saw its first increase in employment since June 2002: banking saw a small net increase of 20 during the first 6 months of 2005, while the remaining sub-sectors (accounting for about half of the entire sector) saw a net increase of 140;
- the **number of locally qualified staff** in the private sector was **820 more** than in June 2004; the number of non-locally qualified private sector staff decreased by 280 during the last 12 months;
- 1,850 people were engaged in **one-person businesses**, up by 160 on June 2004;
- **registered unemployment** in Jersey has fallen during 2005, and stood at 340 in July 2005, some 190 less than 12 months previously.

### Overview: Total Employment

The total number in employment in Jersey in June 2005, either full-time or part-time, was 52,910 which is 550 (1.1%) more than in June 2004.

The private sector, including States Trading Committees (see Note 2) and singleperson enterprises, employed 46,420 people; this total is 600 (1.3%) *more* than a year earlier. In the public sector the headcount was reported at 6,490, which is 60 (0.9%) *less* than a year earlier; public sector employment equates to 5,550 full-time equivalent (FTE) employees.

**Table 1: Employment (headcount) in the private and public sectors**

		<u>Private</u>	<u>Public</u> <sup>[4]</sup>	<u>Total</u>
<b>1996</b>	Jun	45,940	5,810	<b>51,760</b>

	Dec	41,170	5,770	<b>46,950</b>
<b>1997</b>	Jun	47,010	5,930	<b>52,930</b>
	Dec	43,800	5,800	<b>49,600</b>
<b>1998</b>	Jun	49,480	5,930	<b>55,410</b>
	Dec	44,640	5,930	<b>50,570</b>
<b>1999</b>	Jun	48,770	6,130	<b>54,900</b>
	Dec	43,610	5,970	<b>49,580</b>
<b>2000</b>	Jun	47,760	6,070	<b>53,830</b>
	Dec	43,810	5,950	<b>49,770</b>
<b>2001</b>	Jun	47,550	6,200	<b>53,750</b>
	Dec	43,970	6,130	<b>50,100</b>
<b>2002</b>	Jun	47,400	6,260	<b>53,660</b>
	Dec	43,980	6,310	<b>50,290</b>
<b>2003</b>	Jun	46,800	6,470	<b>53,270</b>
	Dec	43,220	6,450	<b>49,670</b>
<b>2004</b>	Jun	45,820	6,550	<b>52,360</b>
	Dec	43,120	6,450	<b>49,570</b>
<b>2005</b>	Jun	46,420	6,490	<b>52,910</b>

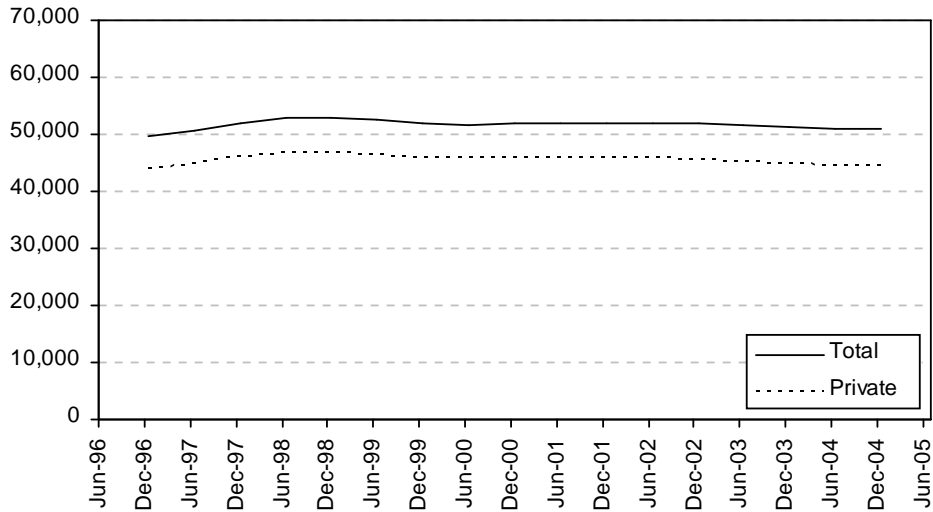
Numbers are rounded independently to the nearest 10.

The total number of people in employment rose rapidly from 51,760 at June 1996 to a peak of 55,410 at June 1998 (Table 1). Since 1999, June peaks have declined slightly, consistent with a slow reduction in the number of seasonal workers.

Figure 1 shows the trend in total and private sector employment since 1996 (see Note 3). The chart indicates that total and private sector employment in Jersey was substantially constant between 1999 and December 2002 but decreased throughout 2003 and 2004. The latest data suggest an end to the recent trend of sizeable declines in private sector employment.

**Figure 1 - Total and Private sector Headcount**

(12-month moving average)



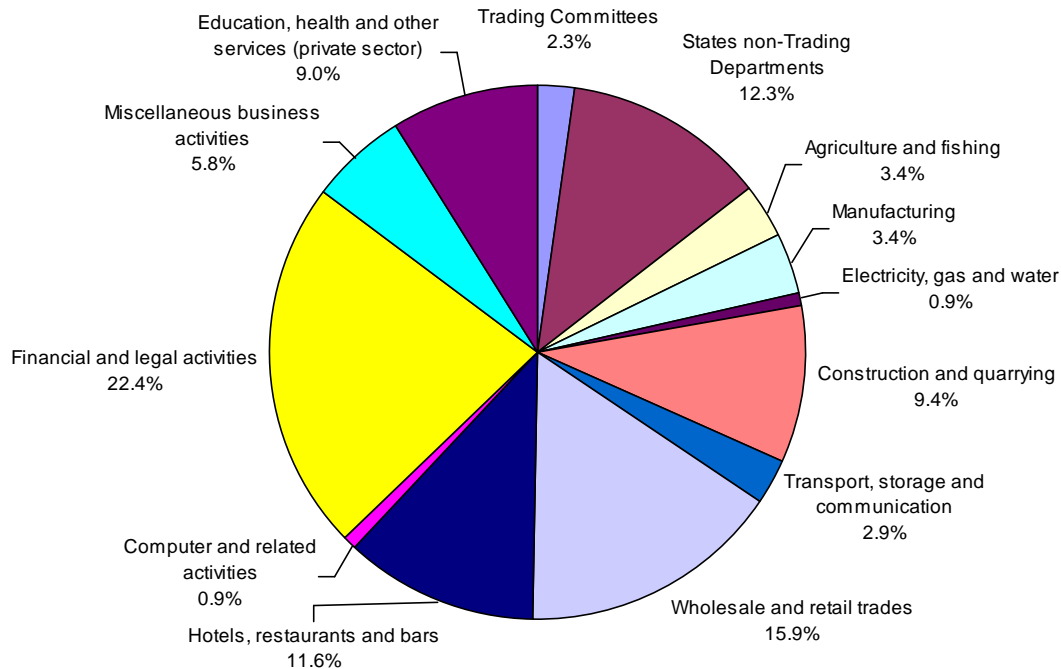
### Sectoral Breakdown

Figure 2 shows the sectoral breakdown of employment at June 2005 –

- almost a quarter (22.4%) of the total were engaged in financial and legal services (11,830);
- almost a sixth (15.9%) were in wholesale and retail trades (8,400).
- the public sector (excluding States Trading Committees) accounted for about one in eight of Jersey's labour force.

## Figure 2 - Jersey Employment

June 2005 - Headcount



### Overview: Private sector

The number of people employed in Jersey businesses in June 2005 was 46,420, which is 600 more than a year earlier. This annual rise of 1.3% constitutes the first increase for 2½ years, the first 12-month increase in June since June 1998, and is the largest increase since December 1998.

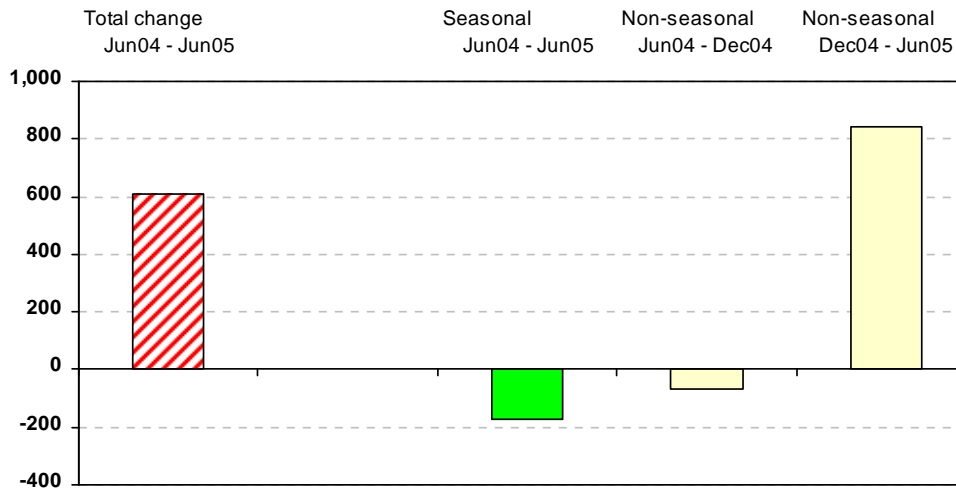
The latest net increase of 600 on an annual basis consisted of (see Figure 3) –

- a decrease of 170 as a result of seasonal industries (Agriculture and fishing, Hotels, restaurants and bars, and Transport, storage and communication) taking on fewer seasonal staff compared to the previous June;
- an increase of 840 jobs in the non-seasonal sectors in the period December 2004 to June 2005;
- a small decrease of 70 in the non-seasonal sectors between June and December 2004.

The dominant feature of Figure 3 is the increase in employment (of more than 800) in the non-seasonal sectors during the first 6 months of 2005.

The small decline for the non-seasonal sectors between June and December 2004 is indicative of some residual seasonal influences within these sectors, e.g. car hire in Miscellaneous business activities and sporting and entertainment activities in education, health and other services. Such seasonal activities will also have contributed slightly to the increase observed in the non-seasonal sectors during the first 6 months of 2005.

**Figure 3 - Net changes Jun 04 to Jun 05**

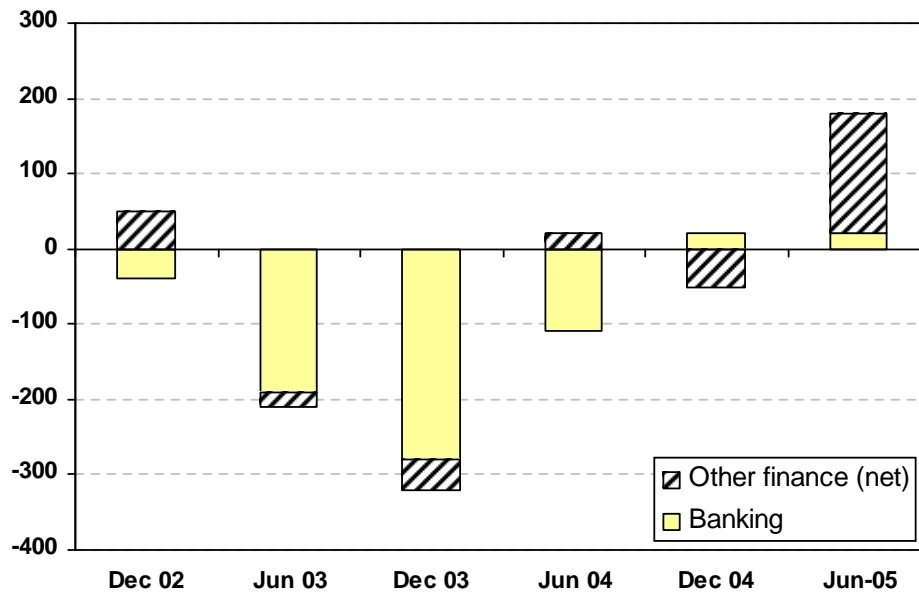


During the first 6 months of 2005, the financial services sector showed an increase in overall employment of 160 (Table 2). This increase follows a series of decreases in each of the preceding 6-month periods. Banking, which constitutes almost half of total employment in the sector, has stabilised in terms of employee numbers during the past 12 months. The banking sub-sector accounted for most of the overall decline in employment seen by the finance sector between 2002 and 2004.

**Table 2: Employment in the sub-sectors of financial services: June 2002 – June 2005**

	Jun-02	Dec-02	Jun-03	Dec-03	Jun-04	Dec-04	Jun-05
Banking	6,160	6,120	5,930	5,650	5,540	5,560	5,580
Trust & Co. Admin.	2,340	2,440	2,440	2,410	2,420	2,350	2,390
Legal	2,060	2,010	2,010	2,030	2,050	2,050	2,140
Accountancy	790	810	790	730	720	770	780
Other	950	930	930	960	960	930	940
<b>Total</b>	<b>12,300</b>	<b>12,300</b>	<b>12,100</b>	<b>11,790</b>	<b>11,690</b>	<b>11,670</b>	<b>11,830</b>

**Figure 4 - Six-month changes in Finance sector employment 2002 - 2005**



The construction sector recorded an increase of almost 6% (260 employees) compared to June 2004, the largest annual increase in this sector for more than 3 years. The cyclical nature of employment in construction is apparent in Appendix 1, with previous periods of growth occurring in 1997/8 and 2001/2.

The retail component of wholesale and retail showed a net increase of 350 compared to 12 months previously. This growth in retail was predominantly due to increased employment in the area of fulfilment during the latter part of 2004 (up by 180 employees between June 2004 and December 2004).

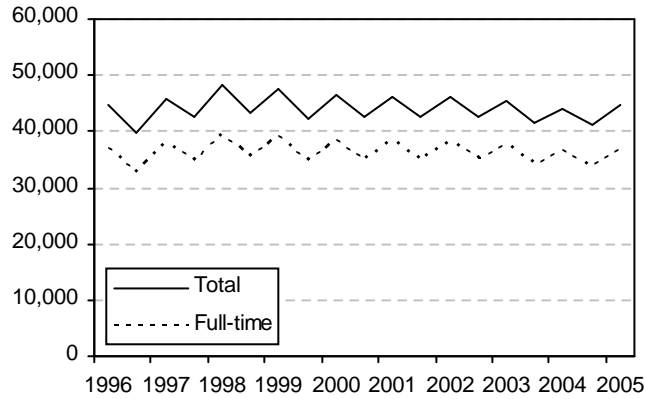
Agriculture and fishing recorded the largest decrease in total employment over the 12 months to June 2005 reporting a net reduction of 170, predominantly due to reduced employment of seasonal staff. The decrease recorded in the manufacturing sector was largely due to a reclassification of management and administrative staff into the wholesale and retail sector by one undertaking.

Employment excluding one-person businesses

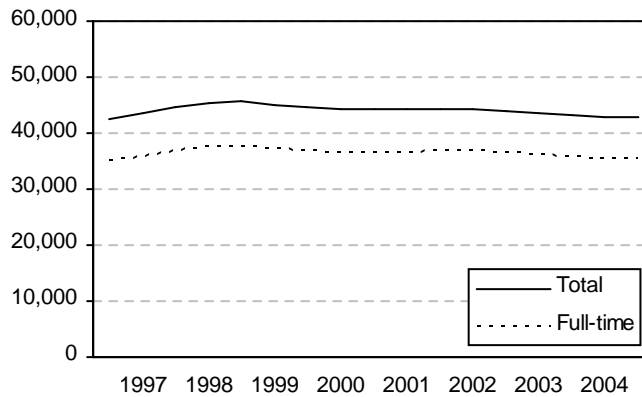
The number in *full-time* employment increased by 190 over the 12 months to June 2005, to stand at 36,710, an increase of 0.5%. The number in *part-time* employment increased by 3.3% (250) to 7,860.

On a shorter time-frame, between December 2004 and June 2005, full-time employment increased by 2,850 and part-time employment increased by 380. These shorter-term changes are heavily influenced by seasonal factors, as can be seen from Figure 5a. The underlying trend, excluding seasonal and other short-term variations, is shown by Figure 5b (see Note 3). The 12-month percentage changes are shown in Figure 6.

**Figure 5a - Employment in Jersey Undertakings**



**Figure 5b - Underlying trend in employment**



**Figure 6 - Twelve month percentage changes in private sector employment**



Employment in one-person businesses

In June 2005 there were 1,850 reported single-person undertakings, about 160 more than a year earlier.



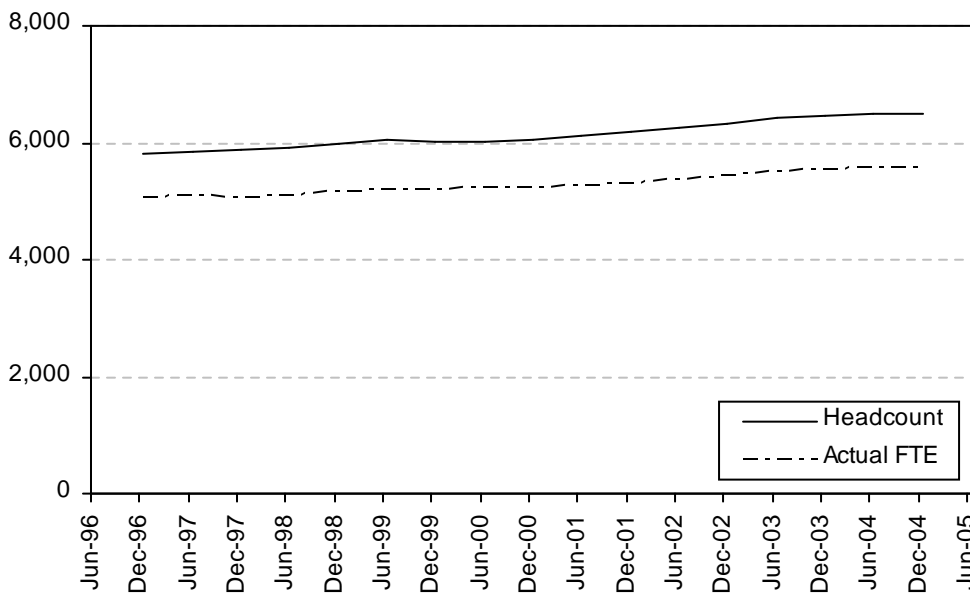
Increases in one-person businesses over the 12 months to June 2005 occurred notably in the retail subsector of wholesale and retail trades, in the building installation and completion sub-sectors of construction, and in other services activities within the education, health and other services sector.

Single-person undertakings were not being consistently recorded prior to 2000, so detailed figures excluding single-person undertakings are presented in Appendix 1; those including single-person undertakings are shown in Appendix 2 (see Note 6).

**Overview: Public sector**

Total headcount in the public sector stood at 6,490 in June 2005. This total represents a reduction of 60 compared to the same period in 2004, and represents the first annual fall in public sector headcount for almost 5 years. As Table 1 and Figure 7 show, public sector headcount increased from 5,810 to 6,490 between June 1996 and Jun 2005.

**Figure 7 - Public Sector employment**



For the public sector it is possible to calculate the number of actual “Full-Time Equivalent” (FTE) employees. This measure of employment includes filled permanent, contract, seasonal and training positions weighted according to the proportion of a full week actually worked. Actual FTE employment constitutes a more representative indicator of growth in public sector than that of headcount as approval for changes in employment is granted on an FTE basis.

In June 2005, civil servants accounted for about a third (34%, 1,860 FTE) of total public sector actual FTE, manual workers for about a sixth (17%, 970 FTE), and other employees (e.g. teachers, nurses, doctors, police, Crown Appointees) for the remaining half (49%, 2,720 FTE).

In terms of departments, in June 2005 Education, Sport and Culture accounted for about a quarter of total public sector actual FTE (27%, 1,490 FTE), Health and Social Services for almost two-fifths (38%, 2,120 FTE) and all other departments for over a third (35%, 1,950 FTE).

**Residential qualifications**

Overall, around 82% of all those employed in Jersey in June 2005 were locally qualified (as defined by the Regulation of Undertakings and Development Law, see Note 4), a further 2% were “(j)” category and 16%

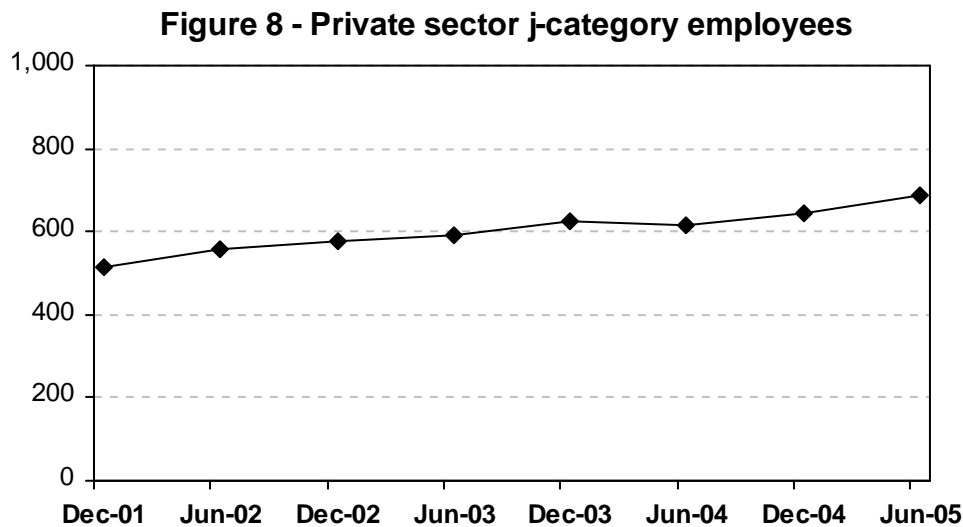
(representing almost one in 6 workers) were not locally qualified.

The States of Jersey Treasury estimates that 98.6% of public sector staff were locally qualified (including “(j)” category) as at June 2005. On the basis of 2001 Census information, it is estimated that 7% of public sector employees were “(j)” category.

The residential status of staff in the private sector was recorded for the first time by the December 2001 Manpower Survey. Each undertaking reported the numbers of locally qualified and non-locally qualified employees; full-time employees with “(j)” category housing qualifications were recorded separately from other locally qualified staff.

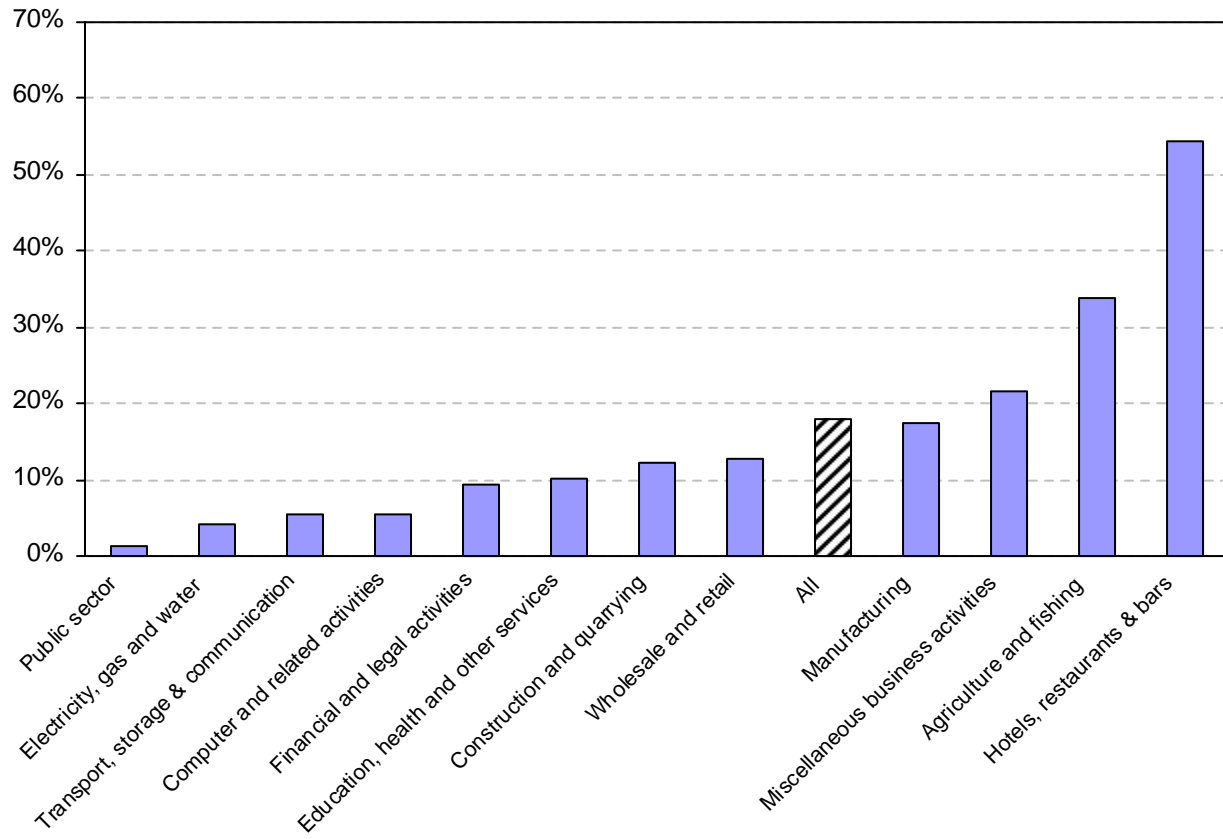
Of the 46,420 total headcount reported in the private sector in June 2005, four-fifths (80.4%) were locally qualified and a further 1.5% (690 staff) were qualified under “(j)” category housing regulations; the remaining 18.1%, representing more than a sixth of all private sector staff, were not locally qualified.

The number of locally qualified staff in the private sector in June 2005 was 820 more than in June 2004, while the number of private sector staff who were not locally qualified was 280 lower than a year previously. The number of “(j)” category employees in the private sector has increased by a sixth (from 590 to 690) during the last 2 years (Figure 8).



For the private sector in June 2005, the highest proportions of non-qualified employees were in hotel, restaurants and bars (54%) and agriculture and fishing (34%); whilst electricity, gas and water (4%), computing (5%) and transport, storage and communication (6%) had the lowest (Figure 9). About 9% of employees in the finance sector were non-qualified.

**Figure 9 - Percentage of non-qualified employees by sector**



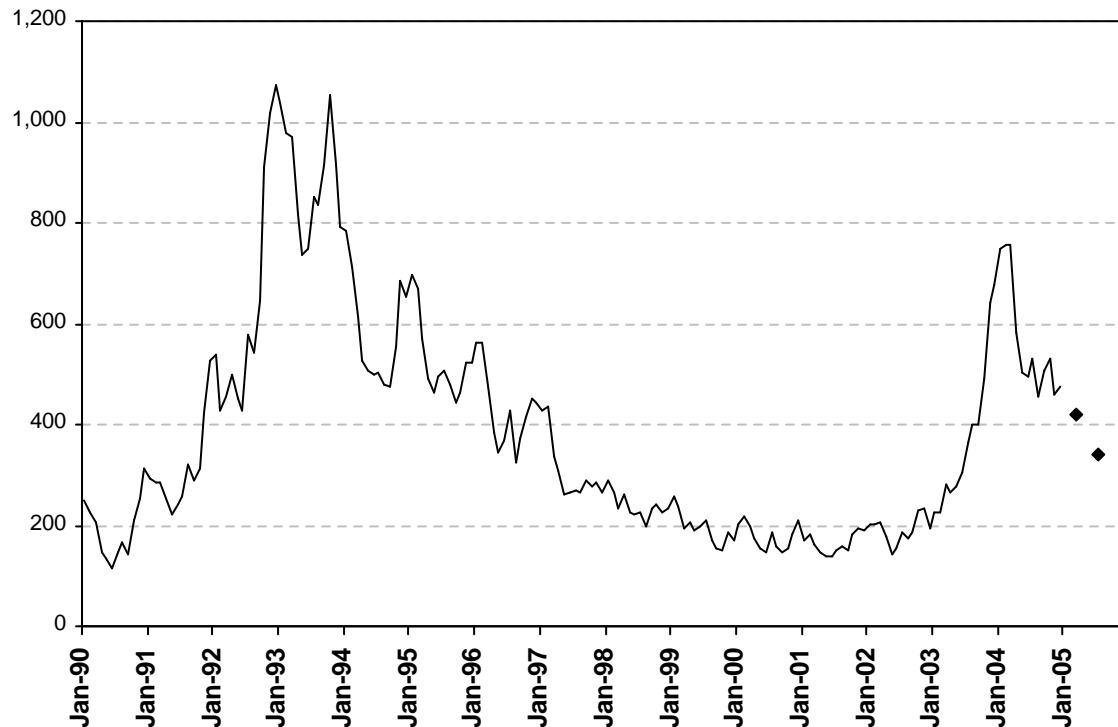
## **Unemployment**

During the first 6 months of 2005 the number of people registered as unemployed in Jersey has decreased and stood at 340 in mid-July 2005, having been fairly constant at around 500 per month during the latter part of 2004.

It must be re-iterated that due to the absence of unemployment benefit in Jersey the number of people registered as unemployed should be regarded as an indicator rather than a measure of the actual level of unemployment, and can be influenced by factors such as greater awareness of the other benefits of registering as unemployed.

The number of people registered with Employment and Social Services as unemployed in Jersey is presented in Figure 10. This chart shows that registered unemployment in Jersey increased during the economic slowdown of the early 1990s before declining over the subsequent years to 1999; registered unemployment was then fairly constant for 3 years before rising in early 2004 and then declining more recently.

**Figure 10 - Registered unemployment in Jersey 1990 - 2005**



### International comparisons

In the UK, for the second quarter of 2005 there were an estimated 27.5 million people employed and 0.87 million people claiming Jobseeker's Allowance (the Claimant Count). In Jersey there were 340 persons registered as unemployed in mid-July 2005. People *registered* as unemployed were therefore less than 1% of total employment in Jersey in June-July 2005, compared to about 3% in the UK. <sup>[5]</sup>

However, such a comparison based on the numbers of *registered* unemployed is likely to be affected by the absence of unemployment benefit in Jersey, reducing the incentive to register as unemployed. A less biased indicator is the ILO unemployment rate (see Note 5): for the UK this stood at 4.7% in the second quarter of 2005. In March 2001, as measured by the 2001 Jersey Census, the ILO unemployment rate for Jersey was 2.1% (corresponding to 1,020 people).

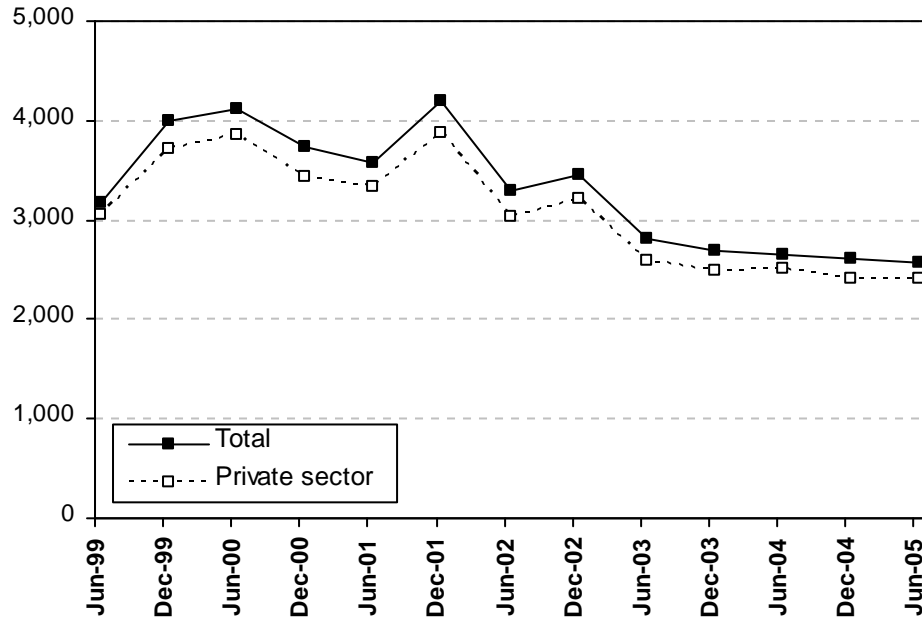
### Vacancies

The total number of vacancies in June 2005 (2,580) was slightly below that reported 6 months and one year previously. Vacancies for full-time positions constituted about five-sixths of all private sector vacancies in June 2005. Figure 11 shows the total number of vacancies (full and part-time) and the number reported in the private sector over the past 6 years.

2,410 vacancies were reported by the private sector in June 2005, constituting about 5% of the total number employed in such undertakings.

In the public sector there were 170 vacancies reported, approximately 3% of the total number employed within this sector.

**Figure 11 - Vacancies**



Numbers are rounded independently to the nearest 10.

Acknowledging that there may be some inconsistency in the reporting of vacancies by undertakings in the private sector, and also the possible effect of recent changes in wording on the Manpower Survey form itself, Figure 11 nevertheless indicates that the overall level of vacancies since 2003 has been substantially below that of the prior period 1999-2002.

## Notes

1. The Manpower Survey encompasses about 5,000 undertakings in Jersey, employing a total of more than 46,000 staff (June 2005) including some 8,500 parttime staff (who may have more than one job). Prior to December 2001, the Survey was conducted quarterly; from June 2002 the survey has taken place at 6-monthly intervals.
2. The “private sector” includes States Trading Committees, the Jersey Financial Services Commission, the Family Nursing and Home Care Service and the Jersey Competition Regulatory Authority. These bodies, which are subject to the Regulation of Undertakings and Development Law, accounted for a total of 1,510 staff at June 2005.
3. For the 6-monthly data of Figures 1, 5b and 7, short-term variations (largely due to seasonal factors) were removed by calculating a weighted 3-point moving average; entries for June 1996 and June 2005, therefore, do not appear in these plots.
4. The definition of “locally qualified” as applied under the *Regulation of Undertakings and Development (Jersey) Law, 1973 as amended* includes all persons in the following categories –
  - (i) residentially qualified persons falling within any of the Housing Regulations, excluding Regulation (l) and Regulation (m);
  - (ii) persons resident for the whole of the past consecutive 5 years;
  - (iii) the spouses of (i) or (ii) above;
  - (iv) the children under 18 years (or if students under 25 years) of those in (i), (ii) or (iii) above.The analysis in this report further divides the locally qualified between “(j)” category and the remainder.
5. The International Labour Organisation (ILO) definition of unemployment includes all adults (aged 16 and over) who are not working and looking for or waiting to take up a job.
6. The historic numbers presented in the appendices for sectoral employment show some minor differences from those presented in previous Manpower Survey reports; these arise from minor revisions to staffing levels reported by a small number of undertakings.
7. The June 2004 public sector headcount figures have been restated by the Treasury Department from those previously reported to include an additional 52 posts in the Education, Sport and Culture Department. This addition relates to multiple part-time roles undertaken by individual staff which had previously been reported as only one headcount for each individual. In Table 1, the public sector headcount figures have been revised back to June 2001 on a headcount/FTE basis.
8. Further information about the Manpower Survey is available from the Statistics Unit, telephone 603403, and about the States of Jersey Manpower Report from the Treasury, telephone 603000. Enquiries about the Regulation of Undertakings and Development Law should be addressed to the Regulation of Undertakings and Development Office, telephone 603710.

*Statistics Unit*

*4th October 2005*

### Appendix 1 - Manpower Engaged by Sector

(In businesses in which two or more people are engaged)

	Jun-96	Dec-96	Jun-97	Dec-97	Jun-98	Dec-98	Jun-99	Dec-99	Jun-00	Dec-00	Jun-01	Dec-01	Jun-02	Dec-02	Jun-03	Dec-03	Jun-04	Dec-04	Jun-05	
<b>Full-time staff</b>																				
Agriculture and Fishing	2,150	1,420	2,140	1,470	2,180	1,440	2,170	1,470	1,980	1,420	1,940	1,330	1,870	1,410	1,810	1,380	1,680	1,220	1,540	
Manufacturing	2,070	2,000	2,030	1,970	1,960	1,940	1,960	1,910	1,970	1,880	1,780	1,750	1,830	1,740	1,700	1,570	1,560	1,390	1,390	
Construction and Quarrying	3,960	3,840	4,100	4,350	4,610	4,290	4,280	4,090	3,990	4,320	4,320	4,410	4,270	4,270	4,160	3,910	4,050	4,020	4,330	
Electricity, Gas and Water	590	600	580	620	600	620	600	580	610	600	590	580	560	540	530	500	480	480	480	
Wholesale and Retail Trades	6,660	6,320	6,710	6,530	6,730	6,460	6,520	6,270	6,350	6,190	6,300	6,140	6,190	6,060	6,170	6,140	6,130	6,350	6,340	
Hotels, Restaurants & Bars	6,740	3,880	6,790	4,110	6,790	4,130	6,510	3,800	6,120	3,720	5,720	3,500	5,530	3,560	5,410	3,370	3,370	5,080	5,080	
Transport, Storage & Communication	2,330	2,180	2,380	2,340	2,500	2,370	2,570	2,370	2,500	2,300	2,470	2,280	2,480	2,260	2,410	2,210	2,370	2,210	2,380	
Computer and related activities	170	190	200	210	230	210	230	250	280	310	300	300	320	300	320	320	310	320	330	
Financial and related activities	8,510	8,740	9,060	9,550	9,950	10,180	10,280	10,140	10,400	10,510	10,650	10,840	10,930	10,950	10,680	10,440	10,380	10,370	10,540	
Miscellaneous Business Activities	1,240	1,120	1,250	1,240	1,340	1,260	1,380	1,240	1,350	1,330	1,390	1,310	1,450	1,370	1,450	1,370	1,450	1,350	1,420	
Education, Health and Other Services	2,530	2,370	2,630	2,500	2,690	2,570	2,690	2,530	2,710	2,580	2,750	2,620	2,790	2,720	2,870	2,810	2,910	2,800	2,890	
<b>Total full-time staff</b>	<b>36,940</b>	<b>32,660</b>	<b>37,670</b>	<b>34,960</b>	<b>39,190</b>	<b>35,460</b>	<b>39,180</b>	<b>34,610</b>	<b>38,310</b>	<b>34,620</b>	<b>38,200</b>	<b>34,960</b>	<b>38,310</b>	<b>33,200</b>	<b>37,460</b>	<b>34,160</b>	<b>36,320</b>	<b>33,660</b>	<b>38,710</b>	
<b>Part-time staff</b>																				
Agriculture and Fishing	220	190	200	210	220	200	230	160	210	170	200	180	230	150	240	160	210	170	170	
Manufacturing	440	370	390	360	420	380	420	410	420	380	480	460	430	370	360	320	330	300	320	
Construction and Quarrying	220	220	240	250	270	280	260	240	280	250	260	260	250	260	250	270	310	280	250	
Electricity, Gas and Water	30	30	20	30	20	20	20	10	20	20	20	20	20	20	10	10	10	10	20	
Wholesale and Retail Trades	1,910	1,860	1,930	1,920	2,010	1,800	1,750	1,720	1,730	1,590	1,560	1,620	1,550	1,560	1,640	1,680	1,640	1,850	1,750	
Hotels, Restaurants & Bars	980	790	1,060	930	1,180	950	1,180	940	1,030	950	1,000	900	1,010	780	950	790	920	800	1,040	
Transport, Storage & Communication	280	170	330	200	370	260	340	230	360	290	320	280	270	230	230	220	220	210	230	
Computer and related activities	20	20	30	30	40	50	50	50	70	70	60	60	60	60	60	50	50	60	60	
Financial and related activities	1,200	1,230	1,230	1,240	1,300	1,310	1,320	1,270	1,300	1,330	1,380	1,310	1,280	1,260	1,320	1,250	1,200	1,200	1,180	
Miscellaneous Business Activities	1,080	1,070	1,070	1,080	1,260	1,210	1,270	1,160	1,250	1,180	1,260	1,130	1,190	1,230	1,300	1,260	1,260	1,230	1,330	
Education, Health and Other Services	1,270	1,240	1,290	1,350	1,490	1,390	1,430	1,450	1,480	1,460	1,540	1,460	1,440	1,380	1,470	1,410	1,480	1,390	1,510	
<b>Total part-time staff</b>	<b>7,670</b>	<b>7,160</b>	<b>7,610</b>	<b>7,490</b>	<b>8,570</b>	<b>7,650</b>	<b>8,270</b>	<b>7,630</b>	<b>8,060</b>	<b>7,670</b>	<b>8,090</b>	<b>7,670</b>	<b>7,730</b>	<b>7,310</b>	<b>7,630</b>	<b>7,440</b>	<b>7,610</b>	<b>7,460</b>	<b>7,960</b>	
<b>All staff</b>																				
Agriculture and Fishing	2,370	1,610	2,340	1,680	2,400	1,640	2,400	1,640	2,190	1,590	2,140	1,510	2,100	1,560	2,050	1,520	1,690	1,380	1,710	
Manufacturing	2,510	2,370	2,420	2,320	2,380	2,310	2,380	2,310	2,390	2,250	2,260	2,200	2,260	2,100	2,060	1,890	1,880	1,680	1,700	
Construction and Quarrying	4,190	4,050	4,350	4,600	4,880	4,570	4,540	4,340	4,330	4,250	4,570	4,580	4,660	4,550	4,410	4,380	4,290	4,580	4,580	
Electricity, Gas and Water	620	630	610	650	620	640	610	600	620	610	600	580	560	540	510	500	500	510	500	
Wholesale and Retail Trades	8,570	8,180	8,630	8,450	8,740	8,270	7,990	7,890	8,080	7,780	7,870	7,640	7,750	7,640	7,810	7,830	7,760	8,200	8,080	
Hotels, Restaurants & Bars	7,720	4,670	7,870	5,040	7,970	5,080	7,930	4,740	7,150	4,670	6,720	4,400	6,540	4,350	6,360	4,350	6,130	4,170	6,110	
Transport, Storage & Communication	2,620	2,350	2,720	2,540	2,880	2,630	2,910	2,600	2,650	2,590	2,790	2,570	2,760	2,490	2,640	2,420	2,600	2,410	2,610	
Computer and related activities	190	210	230	240	270	260	280	290	350	370	380	380	370	360	380	370	360	380	380	
Financial and Legal Activities	9,710	9,970	10,300	10,780	11,250	11,480	11,600	11,410	11,700	11,830	12,010	12,150	12,210	12,210	12,010	11,690	11,580	11,560	11,730	
Miscellaneous Business Activities	2,330	2,190	2,320	2,320	2,600	2,470	2,550	2,600	2,600	2,510	2,650	2,460	2,620	2,600	2,720	2,640	2,690	2,570	2,750	
Education, Health and Other Services	3,800	3,610	3,910	3,850	4,180	3,860	4,120	3,880	4,180	4,040	4,290	4,070	4,230	4,100	4,340	4,220	4,390	4,190	4,410	
<b>Total staff</b>	<b>44,620</b>	<b>39,840</b>	<b>45,580</b>	<b>42,470</b>	<b>48,190</b>	<b>43,210</b>	<b>47,450</b>	<b>42,290</b>	<b>46,330</b>	<b>42,490</b>	<b>46,290</b>	<b>42,640</b>	<b>46,060</b>	<b>42,510</b>	<b>45,310</b>	<b>41,620</b>	<b>44,130</b>	<b>41,340</b>	<b>44,570</b>	

**Appendix 2 - Staff numbers and vacancies**

(all businesses, including one-person bus)

	Staff numbers					Vacancies					Vacancies as % of employed																	
	Jun-01	Dec-01	Jun-02	Dec-02	Jun-03	Jun-04	Dec-04	Jun-05	Jun-01	Dec-01	Jun-02	Dec-02	Jun-03	Jun-04	Jun-05													
<b>Full-time staff</b>																												
Agriculture and Fishing	2,000	1,390	1,930	1,470	1,800	1,480	1,740	1,290	1,620	80	100	70	90	60	70	50	70	50	4	7	4	6	3	5	3	3		
Manufacturing	1,810	1,780	1,870	1,770	1,750	1,620	1,610	1,440	1,440	170	180	120	140	90	60	70	80	70	80	9	9	6	8	5	4	4	5	
Construction and Quarrying	4,570	4,560	4,660	4,550	4,430	4,210	4,350	4,340	4,660	360	460	340	390	330	250	300	330	300	330	8	10	7	9	7	6	7	7	
Electricity, Gas and Water	590	580	560	540	530	500	480	480	480	40	50	40	30	20	30	30	20	20	20	7	9	7	6	4	6	6	4	
Wholesale and Retail Trades	6,440	6,270	6,330	6,220	6,330	6,300	6,310	6,530	6,520	490	610	470	440	430	380	390	370	400	400	8	10	7	7	7	6	6	6	
Hotels, Restaurants & Bars	5,740	3,540	5,550	3,800	5,430	3,590	5,240	3,400	5,100	300	440	230	360	280	270	250	310	250	500	5	12	4	10	5	8	5	9	
Transport, Storage & Communication	2,530	2,350	2,540	2,320	2,480	2,280	2,450	2,290	2,460	100	110	90	110	90	70	50	70	80	80	4	5	4	5	4	3	2	3	
Computer and related activities	330	350	370	360	370	370	380	370	390	50	60	30	50	30	20	30	30	30	30	14	17	8	14	8	5	8	8	
Financial and Legal Activities	10,700	10,900	10,990	11,010	10,740	10,500	10,450	10,430	10,610	1,040	820	770	590	500	540	580	480	530	530	10	8	7	5	5	5	6	5	
Miscellaneous Business Activities	1,520	1,460	1,570	1,530	1,590	1,550	1,610	1,530	1,620	120	160	130	140	110	120	120	100	120	120	8	11	8	9	7	8	7	7	
Education, Health and Other Services	2,850	2,720	2,890	2,840	2,990	2,950	3,060	2,950	3,060	150	200	140	170	140	140	150	140	140	140	5	7	5	6	5	5	5	5	
<b>Total full-time staff</b>	<b>39,100</b>	<b>34,890</b>	<b>39,260</b>	<b>36,210</b>	<b>38,300</b>	<b>36,290</b>	<b>37,690</b>	<b>36,000</b>	<b>37,940</b>	<b>2,890</b>	<b>3,160</b>	<b>2,420</b>	<b>2,710</b>	<b>2,070</b>	<b>1,960</b>	<b>2,010</b>	<b>1,990</b>	<b>2,030</b>	<b>2,030</b>	<b>7</b>	<b>9</b>	<b>6</b>	<b>7</b>	<b>4</b>	<b>6</b>	<b>4</b>	<b>6</b>	<b>4</b>
<b>Part-time staff</b>																												
Agriculture and Fishing	210	190	240	160	250	180	220	170	180	10	30	20	20	10	30	10	30	10	10	5	16	8	13	4	17	5	18	6
Manufacturing	490	470	440	390	380	340	340	310	340	10	10	20	30	20	10	+	20	10	10	2	2	5	8	5	4	4	6	3
Construction and Quarrying	280	290	280	310	280	300	350	310	290	10	20	10	20	10	10	10	20	10	10	4	7	4	6	4	3	3	6	3
Electricity, Gas and Water	20	20	20	20	10	10	10	20	20	+	+	10	10	+	+	+	+	+	+	12	20	31	29	21	23	25	16	15
Wholesale and Retail Trades	1,640	1,700	1,640	1,650	1,720	1,790	1,750	1,980	1,890	180	190	170	180	150	130	130	100	90	100	10	11	10	11	9	7	7	5	5
Hotels, Restaurants & Bars	1,010	910	1,010	790	960	810	930	810	1,040	40	100	60	70	70	60	60	50	50	40	4	11	6	9	7	7	6	6	5
Transport, Storage & Communication	330	290	280	240	240	230	240	230	260	10	10	20	20	10	20	20	20	20	20	3	3	7	8	4	9	8	9	8
Computer and related activities	90	80	80	80	90	80	80	100	100	+	10	10	20	10	10	10	10	10	10	0	13	13	25	11	13	13	10	10
Financial and Legal Activities	1,380	1,340	1,310	1,300	1,350	1,280	1,230	1,230	1,220	50	60	40	50	30	30	30	40	20	40	4	4	3	4	2	2	2	3	2
Miscellaneous Business Activities	1,350	1,220	1,280	1,330	1,390	1,350	1,350	1,330	1,440	100	210	180	200	130	140	120	60	60	60	7	17	14	15	9	10	9	5	4
Education, Health and Other Services	1,660	1,570	1,560	1,510	1,620	1,570	1,640	1,580	1,710	60	80	80	100	80	90	100	90	100	100	4	5	5	7	5	6	6	6	6
<b>Total part-time staff</b>	<b>8,430</b>	<b>8,060</b>	<b>8,160</b>	<b>7,770</b>	<b>8,290</b>	<b>7,590</b>	<b>8,140</b>	<b>8,070</b>	<b>8,480</b>	<b>440</b>	<b>720</b>	<b>610</b>	<b>700</b>	<b>530</b>	<b>340</b>	<b>490</b>	<b>430</b>	<b>390</b>	<b>390</b>	<b>5</b>	<b>9</b>	<b>7</b>	<b>9</b>	<b>6</b>	<b>7</b>	<b>6</b>	<b>5</b>	<b>4</b>
<b>All staff</b>																												
Agriculture and Fishing	2,210	1,580	2,170	1,630	2,130	1,610	1,970	1,460	1,800	80	130	90	120	70	100	50	100	50	100	4	8	4	7	3	6	3	7	3
Manufacturing	2,300	2,250	2,310	2,160	1,950	1,750	1,790	1,780	1,780	170	170	170	170	110	70	70	100	90	90	7	8	6	8	5	4	4	6	5
Construction and Quarrying	4,840	4,850	4,940	4,860	4,710	4,510	4,690	4,650	4,950	370	480	350	410	340	260	310	310	340	340	8	10	7	8	7	6	7	7	7
Electricity, Gas and Water	610	600	580	560	540	510	500	510	500	40	50	50	30	30	30	20	30	30	30	7	8	9	5	6	6	6	4	6
Wholesale and Retail Trades	8,080	7,970	7,970	7,870	8,050	8,090	8,050	8,510	8,400	680	810	640	620	570	510	520	470	490	490	8	10	8	8	7	6	6	6	6
Hotels, Restaurants & Bars	6,740	4,440	6,570	4,390	6,390	4,390	6,160	4,210	6,140	340	540	290	430	360	330	310	360	300	300	5	12	4	10	6	8	5	9	5
Transport, Storage & Communication	2,890	2,640	2,820	2,580	2,720	2,510	2,690	2,520	2,710	110	120	130	100	90	70	90	100	100	100	4	5	4	5	4	4	3	4	4
Computer and related activities	440	490	440	440	460	460	470	480	480	50	70	30	70	50	30	40	40	40	40	11	16	7	16	11	7	9	9	8
Financial and Legal Activities	12,090	12,240	12,300	12,300	12,300	11,790	11,690	11,670	11,830	1,090	880	810	640	530	570	610	520	550	550	9	7	7	5	4	5	5	4	5
Miscellaneous Business Activities	2,870	2,890	2,850	2,850	2,980	2,980	2,980	2,890	3,060	230	370	300	330	240	260	240	160	160	160	8	14	11	12	8	9	8	6	6
Education, Health and Other Services	4,510	4,290	4,450	4,350	4,520	4,520	4,710	4,520	4,770	210	280	220	260	220	240	250	240	240	240	5	7	5	6	5	5	5	5	5
<b>Total staff</b>	<b>47,530</b>	<b>43,970</b>	<b>47,400</b>	<b>43,980</b>	<b>46,590</b>	<b>43,220</b>	<b>45,620</b>	<b>43,120</b>	<b>46,420</b>	<b>3,330</b>	<b>3,880</b>	<b>3,030</b>	<b>3,270</b>	<b>2,600</b>	<b>2,400</b>	<b>2,500</b>	<b>2,400</b>	<b>2,410</b>	<b>2,410</b>	<b>7</b>	<b>9</b>	<b>6</b>	<b>7</b>	<b>6</b>	<b>6</b>	<b>5</b>	<b>6</b>	<b>5</b>



**Appendix 3 - Residential Qualifications (see Note 4 for definitions)**  
(all businesses, including one-person businesses)

	Jun-03			Dec-03			Jun-04			Dec-04			Jun-05							
	Locally Qualified	J. category	Non-locally Qualified	Locally Qualified	J. category	Non-locally Qualified	Locally Qualified	J. category	Non-locally Qualified	Locally Qualified	J. category	Non-locally Qualified	Locally Qualified	J. category	Non-locally Qualified					
<b>Full-time staff</b>																				
Agriculture and Fishing	1,180	+	700	1,880	980	440	1,430	1,070	670	1,740	930	380	1,290	1,070	800	1,620				
Manufacturing	1,450	10	290	1,750	1,380	250	1,620	1,330	270	1,610	1,170	280	1,440	1,200	10	240	1,440			
Construction and Quarrying	3,930	20	480	4,430	3,810	390	4,210	3,870	450	4,350	3,850	20	470	4,040	20	600	4,680			
Electricity, Gas and Water	490	+	40	530	470	20	500	470	480	470	470	20	480	460	+	20	480			
Wholesale and Retail Trades	5,300	40	990	6,330	5,370	880	6,300	5,380	910	6,310	5,520	40	970	6,530	40	930	6,520			
Hotels, Restaurants & Bars	2,140	20	3,280	5,450	1,850	1,720	3,590	2,080	3,130	5,240	1,810	20	1,570	3,400	20	2,900	5,100			
Transport, Storage & Communication	2,310	20	160	2,480	2,170	100	2,280	2,280	150	2,450	2,170	20	2,290	2,290	20	150	2,480			
Computer and related activities	330	10	30	370	340	20	370	350	20	380	340	10	20	370	350	20	380			
Financial and Legal Activities	9,090	380	1,300	10,740	8,940	370	1,200	10,500	8,900	380	1,200	10,450	8,880	390	1,150	10,480	9,080	410	1,100	10,610
Miscellaneous Business Activities	1,390	20	180	1,590	1,380	150	1,550	1,430	160	1,610	1,380	20	130	1,530	1,450	20	140	1,620		
Education, Health and Other Services	2,490	100	400	2,990	2,460	110	2,950	2,540	410	3,060	2,470	100	380	2,950	2,540	410	3,060			
<b>Total full-time staff</b>	<b>30,090</b>		<b>7,530</b>	<b>38,300</b>	<b>29,130</b>	<b>620</b>	<b>31,440</b>	<b>29,670</b>	<b>7,400</b>	<b>37,690</b>	<b>29,000</b>	<b>640</b>	<b>34,110</b>	<b>33,030</b>	<b>30,130</b>	<b>690</b>	<b>7,100</b>	<b>37,940</b>		
<b>Part-time staff</b>																				
Agriculture and Fishing	230	+		250	160		180	210		220	170		170	170		180				
Manufacturing	290	90	380	280	50	340	250	90	340	240	80	310	260	80	340					
Construction and Quarrying	270	10	280	290	10	300	340	10	350	290	20	310	280	10	290					
Electricity, Gas and Water	10	0	10	10	0	10	10	0	10	20	0	20	20	0	20					
Wholesale and Retail Trades	1,560	160	1,720	1,610	180	1,790	1,590	150	1,750	1,810	170	1,980	1,740	150	1,890					
Hotels, Restaurants & Bars	580	400	980	510	290	810	580	350	930	510	300	810	610	440	1,040					
Transport, Storage & Communication	230	+	240	230	+	230	230	+	240	230	+	260	260	+	260					
Computer and related activities	90	+	90	80	+	80	80	+	80	100	+	100	90	+	100					
Financial and Legal Activities	1,340	20	1,350	1,260	20	1,280	1,190	50	1,230	1,210	30	1,230	1,210	20	1,220					
Miscellaneous Business Activities	820	570	1,390	810	540	1,350	820	530	1,350	840	490	1,330	980	510	1,440					
Education, Health and Other Services	1,530	90	1,620	1,480	80	1,570	1,560	80	1,640	1,520	60	1,580	1,630	80	1,710					
<b>Total part-time staff</b>	<b>6,940</b>		<b>1,580</b>	<b>8,290</b>	<b>6,720</b>	<b>1,200</b>	<b>7,930</b>	<b>6,930</b>	<b>1,280</b>	<b>8,140</b>	<b>6,920</b>	<b>1,130</b>	<b>8,070</b>	<b>7,190</b>	<b>1,290</b>	<b>8,490</b>				
<b>All staff</b>																				
Agriculture and Fishing	1,410	+	710	2,130	1,150	460	1,610	1,280	690	1,970	1,100	380	1,480	1,190	810	1,800				
Manufacturing	1,740	10	370	2,120	1,640	300	1,950	1,580	380	1,960	1,410	260	1,480	1,480	10	310	1,780			
Construction and Quarrying	4,210	20	490	4,710	4,100	400	4,510	4,210	460	4,690	4,140	20	480	4,650	20	610	4,950			
Electricity, Gas and Water	500	+	40	540	480	20	510	480	480	500	480	+	480	480	+	20	500			
Wholesale and Retail Trades	6,860	40	1,150	8,050	6,980	1,080	8,090	6,950	1,080	8,050	7,330	40	1,140	8,510	40	1,080	8,400			
Hotels, Restaurants & Bars	2,700	20	3,670	6,390	2,360	2,010	4,390	2,660	3,480	6,160	2,330	20	1,870	4,210	20	3,340	6,140			
Transport, Storage & Communication	2,530	20	170	2,720	2,400	100	2,510	2,510	160	2,690	2,400	20	1,00	2,520	2,540	20	150	2,710		
Computer and related activities	420	10	30	460	410	30	450	480	30	480	450	10	20	470	450	30	480			
Financial and Legal Activities	10,420	380	1,320	12,100	10,200	370	1,220	11,790	10,880	380	1,250	11,830	10,100	380	1,120	11,830				
Miscellaneous Business Activities	2,210	20	750	2,980	2,180	89	2,900	2,240	89	2,980	2,210	20	620	2,850	20	660	3,060			
Education, Health and Other Services	4,020	100	490	4,820	3,950	110	460	4,520	410	490	4,710	100	440	4,520	410	480	4,770			
<b>Total staff</b>	<b>37,030</b>		<b>9,190</b>	<b>46,900</b>	<b>33,850</b>	<b>620</b>	<b>43,220</b>	<b>36,620</b>	<b>8,690</b>	<b>43,620</b>	<b>33,910</b>	<b>640</b>	<b>43,120</b>	<b>37,340</b>	<b>690</b>	<b>8,400</b>	<b>46,420</b>			

[1] The Manpower Survey is analysed by the States of Jersey Statistics Unit on behalf of the Economic Development Committee (Note 1).

[2] Report on Public Sector Manpower – June 2005: States of Jersey Treasury, September 2005.

[3] Throughout this report employment, registered unemployment and vacancy numbers are rounded independently to the nearest 10.

[4] *The public sector headcount figures for 2001 onwards have been revised from those previously published (see Note 7).*

[5] *Figures for the UK are from: Labour Market Trends, Vol. 113 No 9.*